

Product datasheet

Recombinant Human Cytochrome P450 2B6/CYP2B6 protein ab114648

1 Image

Description

Product name	Recombinant Human Cytochrome P450 2B6/CYP2B6 protein		
Expression system	Wheat germ		
Accession	<b><u>P20813</u></b>		
Protein length	Full length protein		
Animal free	No		
Nature	Recombinant		
Species	Human		
Sequence	MELSVLLFLALLTGLLLLLVQRHPNTHDRLPPGPRPLPLLGNLLQMDDRRG LLKSFLRFREKYGDVFTVHLGPRPVVMLCGVEAIREALVDKAEAFSGRGK IAMVDPFFRGYGVIFANGNRWKVLRRFSVTTMRDFGMGKRSVEERIQEEA QCLIEELRKSKGALMDPTFLFQSITANIICSIVFGKRFHYQDQEFLKMLN LFYQTFSLISSVFGQLFELFSGFLTYPGAHRQVYKNLQEINAYIGHSVE KHRETLDPSAPKDLIDTYLLHMEEKSNAHSEFSHQNLNLNTLSLFFAGT ETTSTTLRYGFLMLKYPHVAERVYREIEQVIGPHRPPELHDRAKMPYTE AVIYEIQRFSDLLPMGVPHIVTQHTSFRGYIIPKDTEVFLILSTALHDPH YFEKPDADFNPDHFLDANGALKKTEAFIPFSLGKRICLGEGIAEAEFLFF TTILQNFSMASPVAPEDIDLTPQECGVGKIPPTYQIRFLPR		
Predicted molecular weight	80 kDa including tags		
Amino acids	1 to 491		

Specifications

Our **Abpromise guarantee** covers the use of **ab114648** in the following tested applications.

The application notes include recommended starting dilutions; optimal dilutions/concentrations should be determined by the end user.

<b>Applications</b>	ELISA
	SDS-PAGE
	Western blot
<b>Form</b>	Liquid
<b>Additional notes</b>	This product was previously labelled as Cytochrome P450 2B6.

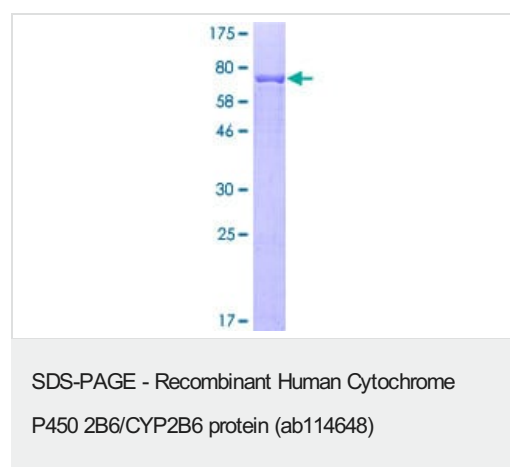
## Preparation and Storage

<b>Stability and Storage</b>	Shipped on dry ice. Upon delivery aliquot and store at -80°C. Avoid freeze / thaw cycles.
	pH: 8.00
	Constituents: 0.3% Glutathione, 0.79% Tris HCl

## General Info

<b>Function</b>	Cytochromes P450 are a group of heme-thiolate monooxygenases. In liver microsomes, this enzyme is involved in an NADPH-dependent electron transport pathway. It oxidizes a variety of structurally unrelated compounds, including steroids, fatty acids, and xenobiotics.
<b>Tissue specificity</b>	Expressed in liver, lung and heart right ventricle.
<b>Sequence similarities</b>	Belongs to the cytochrome P450 family.
<b>Post-translational modifications</b>	Phosphorylation is accompanied by a decrease in enzyme activity.
<b>Cellular localization</b>	Endoplasmic reticulum membrane. Microsome membrane.

## Images



ab114648 analysed on a 12.5% SDS-PAGE gel stained with Coomassie Blue.

**Please note:** All products are "FOR RESEARCH USE ONLY. NOT FOR USE IN DIAGNOSTIC PROCEDURES"

### **Our Abpromise to you: Quality guaranteed and expert technical support**

---

- Replacement or refund for products not performing as stated on the datasheet
- Valid for 12 months from date of delivery
- Response to your inquiry within 24 hours
  
- We provide support in Chinese, English, French, German, Japanese and Spanish
- Extensive multi-media technical resources to help you
- We investigate all quality concerns to ensure our products perform to the highest standards

If the product does not perform as described on this datasheet, we will offer a refund or replacement. For full details of the Abpromise, please visit <https://www.abcam.com/abpromise> or contact our technical team.

### **Terms and conditions**

---

- Guarantee only valid for products bought direct from Abcam or one of our authorized distributors