

Recombinant Human DARC protein ab114557

1 Image

Description

Product name	Recombinant Human DARC protein		
Expression system	Wheat germ		
Accession	<u>Q16570</u>		
Protein length	Full length protein		
Animal free	No		
Nature	Recombinant		
Species	Human		
Sequence	MGNCLHRAELSPSTENSSQLDFEDVWNSSYGVNDSFPD GDYGANLEAAAP CHSCNLLDDSALPFFILTSVLGILASSTVLSMLFRPLFRWQ LCPGWPVLA QLAVGSALFSIVVPVLAPGLGSTRSSALCSLGYCVWYGSA FAQALLLGCH ASLGHRLGAGQVPGLTLGLTVGMGVAALLTLPVTLASGA SGGLCTLIYS TELKALQATHTVACLAIFVLLPLGLFGAKGLKKALGMGPG PWMNILWAWF IFWWPHGVVLGLDFLVRSKLLLLSTCLAQQALDLLLLNLAE ALAILHCVAT PLLLALFCHQATRLLPSLPLPEGWFSHLDTLGSKS		
Predicted molecular weight	63 kDa including tags		
Amino acids	1 to 336		

Specifications

Our Abpromise guarantee covers the use of ab114557 in the following tested applications.	
The application notes include recommended starting dilutions; optimal dilutions/concentrations should be determined by the end user.	
Applications	ELISA Western blot SDS-PAGE
Form	Liquid
Additional notes	

Preparation and Storage

Stability and Storage

Shipped on dry ice. Upon delivery aliquot and store at -80°C. Avoid freeze / thaw cycles.

pH: 8.00

Constituents: 0.3% Glutathione, 0.79% Tris HCl

General Info

Function

Non-specific receptor for many chemokines such as IL-8, GRO, RANTES, MCP-1 and TARC. It is also the receptor for the human malaria parasites *Plasmodium vivax* and *Plasmodium knowlesi*.

Tissue specificity

Found in adult kidney, adult spleen, bone marrow and fetal liver. In particular, it is expressed along postcapillary venules throughout the body, except in the adult liver. Erythroid cells and postcapillary venule endothelium are the principle tissues expressing duffy. Fy(-A-B) individuals do not express duffy in the bone marrow, however they do, in postcapillary venule endothelium.

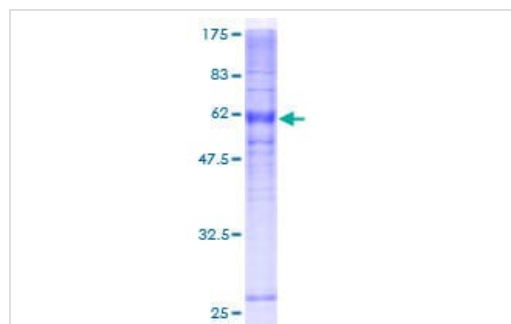
Sequence similarities

Belongs to the G-protein coupled receptor Duffy family.

Cellular localization

Membrane.

Images



12.5% SDS-PAGE Stained with Coomassie Blue

SDS-PAGE - Recombinant Human DARC protein
(ab114557)

Please note: All products are "FOR RESEARCH USE ONLY. NOT FOR USE IN DIAGNOSTIC PROCEDURES"

Our Abpromise to you: Quality guaranteed and expert technical support

- Replacement or refund for products not performing as stated on the datasheet
- Valid for 12 months from date of delivery
- Response to your inquiry within 24 hours
- We provide support in Chinese, English, French, German, Japanese and Spanish
- Extensive multi-media technical resources to help you

- We investigate all quality concerns to ensure our products perform to the highest standards

If the product does not perform as described on this datasheet, we will offer a refund or replacement. For full details of the Abpromise, please visit <https://www.abcam.com/abpromise> or contact our technical team.

Terms and conditions

- Guarantee only valid for products bought direct from Abcam or one of our authorized distributors