

Recombinant Human DC-SIGNR protein (Fc Chimera)  
ab83920

3 Images

Description	
Product name	Recombinant Human DC-SIGNR protein (Fc Chimera)
Purity	> 95 % SDS-PAGE.
Expression system	HEK 293 cells
Accession	<u>Q9H2X3</u>
Protein length	Protein fragment
Animal free	No
Nature	Recombinant
Species	Human
Sequence	<div>Theoretical Sequence: HGTELPSPPSKLQVSKVPSSLSQEQSEQDAIQNLTLKA AVGELSEK SKLQEIQELTQLKAAVGELPEKSKLQEIQELTRLKAAVG ELPEKSKLQ EIQELTRLKAAVGELPEKSKLQEIQELTRLKAAVGELPE KSKLQEIQ ELTELKAAVGELPEKSKLQEIQELTQLKAAVGELPDQSK QQQIQELTD LKTAFERLCRHCPKDWTFQGNCFMSNSQRNWHDSVT ACQEVRAQLVVI KTAEEQNFLQLQTSRSNRFSSWMGLSDLNQEGTWQWVD GSPLSPSFQRYWN SGEPNNSGNEDCAEFSGSGWNDNRCDVDNYWICKKPA ACFRDGIPKVDKK VEPKSCDKTHTCPPCPAPELLGGPSVFLFPPKPKDTLMIS RTPEVTCVVV DVSHEDPEVKFNWYVDGVEVHNAKTKPREEQYNSTYRV VSVLTVLHQDWL NGKEYKCRVSNKALPAPIEKTISKAKGQPREPQVYTLPPS RDELTKNQVS LTCLVKGFYPSDIAVEWESNGQPENNYKTPPVLDSDGS FFLYSKLTVDK SRWQQGNVFSCSVMHEALHNHYTQKSLSLSPGK</div>

**Additional sequence information** Fused with the Fc region of Human IgG1 at the C-terminus.

## Specifications

---

Our **Abpromise guarantee** covers the use of **ab83920** in the following tested applications.

The application notes include recommended starting dilutions; optimal dilutions/concentrations should be determined by the end user.

**Applications** SDS-PAGE

**Form** Lyophilized

## Preparation and Storage

---

**Stability and Storage** Shipped at 4°C. Store at +4°C.

Constituents: 10% Trehalose, 1% Human serum albumin

**Reconstitution** It is recommended that 0.5 ml of sterile phosphate-buffered saline be added to the vial. Following reconstitution short-term storage at 4°C is recommended, with longer-term storage in aliquots at -18 to -20°C. Repeated freeze thawing is not recommended.

## General Info

---

**Function** Probable pathogen-recognition receptor involved in peripheral immune surveillance in liver. May mediate the endocytosis of pathogens which are subsequently degraded in lysosomal compartments. Probably recognizes in a calcium-dependent manner high mannose N-linked oligosaccharides in a variety of pathogen antigens, including HIV-1 gp120, HIV-2 gp120, SIV gp120, ebolavirus glycoproteins, HCV E2, and human SARS coronavirus protein S. Is a receptor for ICAM3, probably by binding to mannose-like carbohydrates. Is presumably a coreceptor for the SARS coronavirus.

**Tissue specificity** Predominantly highly expressed in liver sinusoidal endothelial cells and in lymph node. Found in placental endothelium but not in macrophages. Expressed in type II alveolar cells and lung endothelial cells.

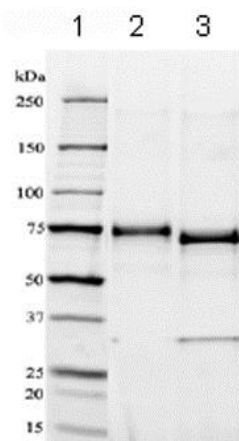
**Sequence similarities** Contains 1 C-type lectin domain.

**Domain** The tandem repeat domain, also called neck domain, mediates oligomerization.

**Cellular localization** Secreted and Cell membrane.

## Images

---



SDS-PAGE - Recombinant Human DC-SIGNR protein (Fc Chimera) (ab83920)

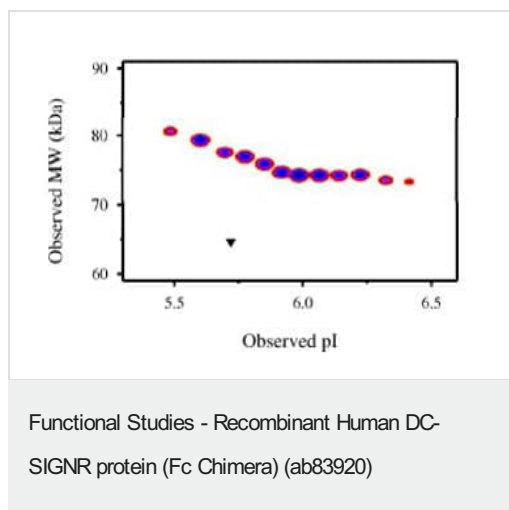
Lane 1 – MW markers; Lane 2 – ab83920; Lane 3 – ab83920 treated with PNGase F to remove potential N-linked glycans. 10 µg protein loaded per lane. Deep Purple stained.

Drop in MW after treatment with PNGase F indicates presence of N-linked glycans. Band in lane 3 at 35 kDa is PNGase F protein.



SDS-PAGE - Recombinant Human DC-SIGNR protein (Fc Chimera) (ab83920)

A sample of ab83920 without carrier protein was reduced and alkylated. 40 µg protein was loaded, focused on a 3-10 IPG strip then run on a 4-20% Tris-HCl 2D gel. Spot train (Deep Purple™ stained) indicates presence of multiple glycoforms of ab83920. Spots within the spot train were cut from the gel and identified by protein mass fingerprinting as DC-SIGNR (Fc Chimera).



Post-translational modifications result in protein heterogeneity. The densitometry scan demonstrates the purified human cell expressed protein exists in multiple glycoforms, which differ according to their level of post-translational modification.

The triangle indicates theoretical pI and MW.

**Please note:** All products are "FOR RESEARCH USE ONLY. NOT FOR USE IN DIAGNOSTIC PROCEDURES"

### Our Abpromise to you: Quality guaranteed and expert technical support

---

- Replacement or refund for products not performing as stated on the datasheet
- Valid for 12 months from date of delivery
- Response to your inquiry within 24 hours
- We provide support in Chinese, English, French, German, Japanese and Spanish
- Extensive multi-media technical resources to help you
- We investigate all quality concerns to ensure our products perform to the highest standards

If the product does not perform as described on this datasheet, we will offer a refund or replacement. For full details of the Abpromise, please visit <https://www.abcam.com/abpromise> or contact our technical team.

### Terms and conditions

---

- Guarantee only valid for products bought direct from Abcam or one of our authorized distributors