

Recombinant Human DERA protein ab113155

1 Image

Description

Product name	Recombinant Human DERA protein
Purity	> 90 % SDS-PAGE. ab113155 was purified using conventional chromatography techniques.
Expression system	Escherichia coli
Accession	<u>Q9Y315</u>
Protein length	Full length protein
Animal free	No
Nature	Recombinant
Species	Human
Sequence	<p>MGSSHHHHHHSSGLVPRGSHMSAHNRGTELDLSWISKI QVNHPAVLRRAE QIQARRTVKKEWQAAWLLKAVTFIDLTTLSGDDTSSNIQRL CYKAKYPIR EDLLKALNMHDKGITTAAVCVYPARVCDAVKALKAAGCNI PVASVAAGFP AGQTHLKTRLEEIRLAVEDGATEIDVVINRSLVLTGQWEAL YDEIRQFRK ACGEAHLKTILATGELGTLTNVYKASMIAMMAGSDFIKTST GKETVNATF PVAIVMLRAIRDFFWKTGNKIGFKPAGGIRSAKDSLAWLSL VKEELGDEW LKPELFRIGASTLLSDIERQYHHVTGRYAAAYHDLPM</p>
Predicted molecular weight	37 kDa including tags
Amino acids	1 to 318
Tags	His tag N-Terminus

Specifications

Our **Abpromise guarantee** covers the use of **ab113155** in the following tested applications.

The application notes include recommended starting dilutions; optimal dilutions/concentrations should be determined by the end user.

Applications	SDS-PAGE Mass Spectrometry
--------------	-------------------------------

<b>Mass spectrometry</b>	MALDI-TOF
<b>Form</b>	Liquid

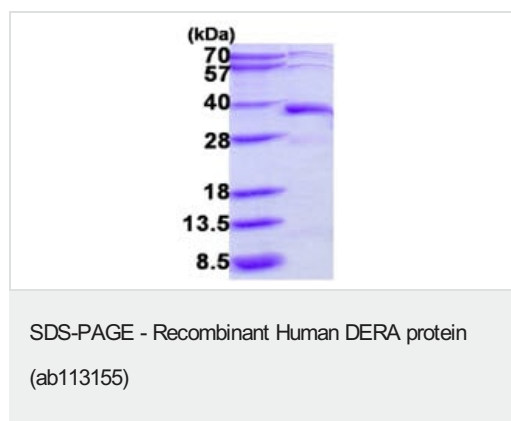
## Preparation and Storage

<b>Stability and Storage</b>	Shipped at 4°C. Store at +4°C short term (1-2 weeks). Upon delivery aliquot. Store at -20°C or -80°C. Avoid freeze / thaw cycle.  pH: 8.00 Constituents: 0.02% DTT, 0.32% Tris HCl, 20% Glycerol (glycerin, glycerine), 0.58% Sodium chloride
------------------------------	--

## General Info

<b>Pathway</b>	Carbohydrate degradation; 2-deoxy-D-ribose 1-phosphate degradation; D-glyceraldehyde 3-phosphate and acetaldehyde from 2-deoxy-alpha-D-ribose 1-phosphate: step 2/2.
<b>Sequence similarities</b>	Belongs to the deoC/fbaB aldolase family. DeoC type 2 subfamily.

## Images



15% SDS-PAGE showing ab113155 (3 µg) at approximately 37.3 kDa.

**Please note:** All products are "FOR RESEARCH USE ONLY. NOT FOR USE IN DIAGNOSTIC PROCEDURES"

## Our Abpromise to you: Quality guaranteed and expert technical support

- Replacement or refund for products not performing as stated on the datasheet
- Valid for 12 months from date of delivery
- Response to your inquiry within 24 hours
- We provide support in Chinese, English, French, German, Japanese and Spanish
- Extensive multi-media technical resources to help you
- We investigate all quality concerns to ensure our products perform to the highest standards

If the product does not perform as described on this datasheet, we will offer a refund or replacement. For full details of the Abpromise, please visit <https://www.abcam.com/abpromise> or contact our technical team.

## Terms and conditions

---

- Guarantee only valid for products bought direct from Abcam or one of our authorized distributors