

Recombinant Human Dishevelled 2 protein ab152348

1 Image

Description	
Product name	Recombinant Human Dishevelled 2 protein
Expression system	Wheat germ
Accession	<u>O14641</u>
Protein length	Full length protein
Animal free	No
Nature	Recombinant
Species	Human
Sequence	MAGSSTGGGGVGETKVYHLDEEETPYLVKIPVPAERITLG DFKSVLQRP AGAKYFFKSMDQDFGVVKEEISDDNARLPCFNGRVVS LVSSDNPQPEMA PPVHEPRAELAPPAPPLPLPPERTSGIGDSRPPSFHPN VSSSHENLEPE TETESVVSRLRRERPRRRDSSEHGAGGHRTGGPSRLERHL AGYESSTLMT SELESTSLGDSDEEDTMSRFSSSTEQSSASRLLKRHRRR RKQRPPRLERT SSFSSVTDSTMSLNIITVTLNMEKYNFLGISIVGQSNERGDG GMGSIM KGGAVAADGRIEPGDMLLQVNDMNFENMSNDDAVRVLR DIVHKPGPMLT VAKCWDPSPOQAYFTLPRNEPIQPIDPAAWVSHSAALTGTF PAYPGSSSMS TITSGSSLPDGCEGRGLSVHTDMASVTKAMAAPESGLEV RDRMWLKITIP NAFLGSDVVDWLYHHVEGFPERREARKYASGLLKAGLIR HTVNKITFSEQ CYYVFGDLSGGCESYLVNLSLNDNDGSSGASDQDTLAPL PGATPWPLLPT FSYQYPAPHPYSPQPPPYHELSSYTYGGGSASSQHSEGS RSSGSTRSDGG AGRTGRPEERAPESKSGSGSESEPSSRGGSLRRGGEAS GTSDGGPPPSRG STGGAPNLRAPGLHPYGPMPGMALPYNPMMVMMPPPP PPPVPPAVQPPG

<b>Predicted molecular weight</b>	105 kDa including tags
<b>Amino acids</b>	1 to 736

## Specifications

---

Our **Abpromise guarantee** covers the use of **ab152348** in the following tested applications.

The application notes include recommended starting dilutions; optimal dilutions/concentrations should be determined by the end user.

<b>Applications</b>	ELISA
	Western blot
	SDS-PAGE

<b>Form</b>	Liquid
-------------	--------

**Additional notes**

## Preparation and Storage

---

<b>Stability and Storage</b>	Shipped on dry ice. Upon delivery aliquot and store at -80°C. Avoid freeze / thaw cycles. pH: 8.00 Constituents: 0.31% Glutathione, 0.79% Tris HCl
------------------------------	----------------------------------------------------------------------------------------------------------------------------------------------------------

## General Info

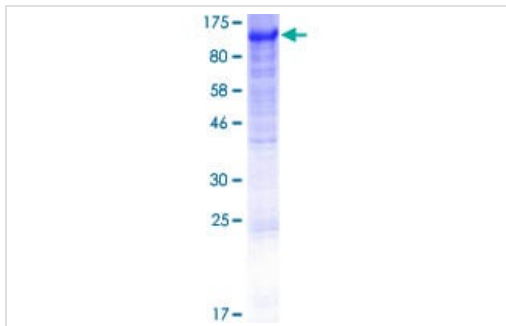
---

<b>Function</b>	Participates in Wnt signaling by binding to the cytoplasmic C-terminus of frizzled family members and transducing the Wnt signal to down-stream effectors. Promotes internalization and degradation of frizzled proteins upon Wnt signaling. Plays a role both in canonical and non-canonical Wnt signaling. Plays a role in the signal transduction pathways mediated by multiple Wnt genes.
<b>Sequence similarities</b>	Belongs to the DSH family. Contains 1 DEP domain. Contains 1 DIX domain. Contains 1 PDZ (DHR) domain.
<b>Domain</b>	The DIX domain mediates homooligomerization.
<b>Cellular localization</b>	Cell membrane. Cytoplasm > cytosol. Cytoplasmic vesicle. Localizes at the cell membrane upon interaction with frizzled family members and promotes their internalization. Localizes to cytoplasmic puncta.

---

## Images

---



12.5% SDS-PAGE analysis of ab152348 stained with Coomassie Blue.

SDS-PAGE - Recombinant Human Dishevelled 2 protein (ab152348)

**Please note:** All products are "FOR RESEARCH USE ONLY. NOT FOR USE IN DIAGNOSTIC PROCEDURES"

#### Our Abpromise to you: Quality guaranteed and expert technical support

---

- Replacement or refund for products not performing as stated on the datasheet
- Valid for 12 months from date of delivery
- Response to your inquiry within 24 hours
- We provide support in Chinese, English, French, German, Japanese and Spanish
- Extensive multi-media technical resources to help you
- We investigate all quality concerns to ensure our products perform to the highest standards

If the product does not perform as described on this datasheet, we will offer a refund or replacement. For full details of the Abpromise, please visit <https://www.abcam.com/abpromise> or contact our technical team.

#### Terms and conditions

---

- Guarantee only valid for products bought direct from Abcam or one of our authorized distributors