

Product datasheet

Recombinant Human DREAM protein ab101211

1 Image

Description

Product name	Recombinant Human DREAM protein
Purity	> 90 % SDS-PAGE. ab101211 was purified using conventional chromatography techniques.
Expression system	Escherichia coli
Accession	<u>Q9Y2W7</u>
Protein length	Full length protein
Animal free	No
Nature	Recombinant
Species	Human
Sequence	MGSSHHHHHSSGLVPRGSHMQPAKEVTKASDGSLLG DLGHTPLSKKEGI KWQRPRLSRQALMRCCLVKWILSSTAPQGSDSSDSELEL STVRHQPEGLD QLQAQTKFTKKELQSLYRGFKNECPTGLVDEDTFKLIYAQ FFPQGDATTY AHFLFNAFDADGNGAIHFEDFVVGLSILLRGTVHEKCLKWA FNLYDINKDG YITKEEMLAIMKSYDMMGRHTYPILREDAPAEHVERFFEK MDRNQDGVV TIEEFLEACQKDENIMSSMQLFENVI
Predicted molecular weight	31 kDa including tags
Amino acids	1 to 256
Tags	His tag N-Terminus

Specifications

Our **Abpromise guarantee** covers the use of **ab101211** in the following tested applications.

The application notes include recommended starting dilutions; optimal dilutions/concentrations should be determined by the end user.

Applications	Mass Spectrometry SDS-PAGE
Mass spectrometry	MALDI-TOF
Form	Liquid

Additional notes

Previously labelled as CSEN.

Preparation and Storage**Stability and Storage**

Shipped at 4°C. Upon delivery aliquot and store at -20°C or -80°C. Avoid repeated freeze / thaw cycles.

pH: 8.00

Constituents: 0.0308% DTT, 0.316% Tris HCl, 10% Glycerol (glycerin, glycerine), 0.58% Sodium chloride

General Info**Function**

Calcium-dependent transcriptional repressor that binds to the DRE element of genes including PDYN and FOS. Affinity for DNA is reduced upon binding to calcium and enhanced by binding to magnesium. Seems to be involved in nociception.

Regulatory subunit of Kv4/D (Shal)-type voltage-gated rapidly inactivating A-type potassium channels, such as KCND2/Kv4.2 and KCND3/Kv4.3. Modulates channel expression at the cell membrane, gating characteristics, inactivation kinetics and rate of recovery from inactivation in a calcium-dependent and isoform-specific manner.

May play a role in the regulation of PSEN2 proteolytic processing and apoptosis. Together with PSEN2 involved in modulation of beta-amyloid formation.

Tissue specificity

Highly expressed in brain. Widely expressed at lower levels. Expression levels are elevated in brain cortex regions affected by Alzheimer disease.

Sequence similarities

Belongs to the recoverin family.

Contains 4 EF-hand domains.

Post-translational modifications

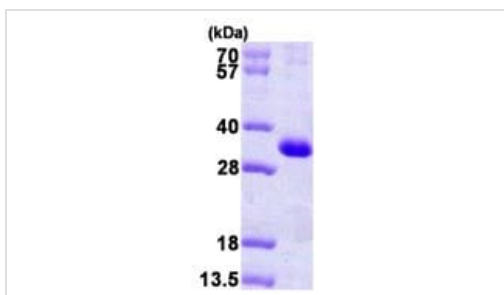
Palmitoylated. Palmitoylation enhances association with the plasma membrane.

Proteolytically cleaved by caspase-3.

Phosphorylation at Ser-63 inhibits cleavage by CASP3.

Cellular localization

Cytoplasm. Cell membrane. Endoplasmic reticulum. Golgi apparatus. Nucleus. Also membrane-bound, associated with the plasma membrane (PubMed:15485870). In the presence of PSEN2 associated with the endoplasmic reticulum and Golgi. The sumoylated form is present only in the nucleus.

Images

15% SDS-PAGE analysis of 3µg ab101211.

SDS-PAGE - Recombinant Human DREAM protein
(ab101211)

Please note: All products are "FOR RESEARCH USE ONLY. NOT FOR USE IN DIAGNOSTIC PROCEDURES"

Our Abpromise to you: Quality guaranteed and expert technical support

- Replacement or refund for products not performing as stated on the datasheet
- Valid for 12 months from date of delivery
- Response to your inquiry within 24 hours

- We provide support in Chinese, English, French, German, Japanese and Spanish
- Extensive multi-media technical resources to help you
- We investigate all quality concerns to ensure our products perform to the highest standards

If the product does not perform as described on this datasheet, we will offer a refund or replacement. For full details of the Abpromise, please visit <https://www.abcam.com/abpromise> or contact our technical team.

Terms and conditions

- Guarantee only valid for products bought direct from Abcam or one of our authorized distributors