

Recombinant Human DUSP23 protein ab117235

1 Image

Description

Product name	Recombinant Human DUSP23 protein		
Purity	> 90 % SDS-PAGE. ab117235 is purified using conventional chromatography techniques.		
Expression system	Escherichia coli		
Accession	<u>Q9BVJ7</u>		
Protein length	Full length protein		
Animal free	No		
Nature	Recombinant		
Species	Human		
Sequence	MGSSHHHHHHSSGLVPRGSHMGVQPPNFSWVLPGRLA GLALPRLPAHYQF LLDLGVRHLVSLTERGPPHSDSCPGLTLHRLRIPDFCPPA PDQIDRFVQI VDEANARGEAVGVHICALGFGRGTGMLACYLVKERGLAA GDAIAEIRRLRP GSIETYEQEKAVFQFYQRTK		
Predicted molecular weight	19 kDa including tags		
Amino acids	1 to 150		
Tags	His tag N-Terminus		

Specifications

Our **Abpromise guarantee** covers the use of **ab117235** in the following tested applications.

The application notes include recommended starting dilutions; optimal dilutions/concentrations should be determined by the end user.

Applications	Mass Spectrometry SDS-PAGE
Mass spectrometry	MALDI-TOF
Form	Liquid
Additional notes	EC=3.1.3.48.

Preparation and Storage

Stability and Storage

Shipped at 4°C. Store at +4°C short term (1-2 weeks). Upon delivery aliquot. Store at -20°C or -80°C. Avoid freeze / thaw cycle.

pH: 8.00

Constituents: 0.03% DTT, 0.32% Tris HCl, 10% Glycerol (glycerin, glycerine), 0.58% Sodium chloride

General Info

Function

Protein phosphatase that mediates dephosphorylation of proteins phosphorylated on Tyr and Ser/Thr residues. In vitro, it can dephosphorylate p44-ERK1 (MAPK3) but not p54 SAPK-beta (MAPK10) in vitro. Able to enhance activation of JNK and p38 (MAPK14).

Tissue specificity

Widely expressed. Highly expressed in spleen, prostate, colon, adrenal gland, mammary gland, thyroid and trachea. Expressed at lower level in uterus, small intestine, bladder, bone marrow, brain, spinal cord and stomach.

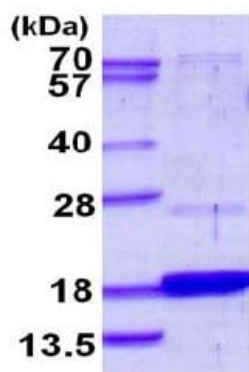
Sequence similarities

Belongs to the protein-tyrosine phosphatase family. Non-receptor class dual specificity subfamily. Contains 1 tyrosine-protein phosphatase domain.

Cellular localization

Cytoplasm > cytosol. Nucleus. Mainly cytosolic. Also nuclear.

Images



15% SDS-PAGE showing ab117235 at approximately 18.8kDa (3μg).

SDS-PAGE - Recombinant Human DUSP23 protein
(ab117235)

Please note: All products are "FOR RESEARCH USE ONLY. NOT FOR USE IN DIAGNOSTIC PROCEDURES"

Our Abpromise to you: Quality guaranteed and expert technical support

- Replacement or refund for products not performing as stated on the datasheet
- Valid for 12 months from date of delivery
- Response to your inquiry within 24 hours
- We provide support in Chinese, English, French, German, Japanese and Spanish
- Extensive multi-media technical resources to help you

- We investigate all quality concerns to ensure our products perform to the highest standards

If the product does not perform as described on this datasheet, we will offer a refund or replacement. For full details of the Abpromise, please visit <https://www.abcam.com/abpromise> or contact our technical team.

Terms and conditions

- Guarantee only valid for products bought direct from Abcam or one of our authorized distributors