

Product datasheet

Recombinant Human E2F6 protein ab114573

1 Image

Description

Product name	Recombinant Human E2F6 protein	
Expression system	Wheat germ	
Accession	<u>O75461</u>	
Protein length	Full length protein	
Animal free	No	
Nature	Recombinant	
Species	Human	
Sequence	MSQQRPAKLP SLLLDPT EETVRRRCRDPINVEGLLPSKI RINLEDNVQY VSMRKALKVKRPRFDVSLVYLTRKFMDLVRSAPGGILDNLN KVATKLGVRK RRVYDITNVLDGIDLVEKKSKNHIRWIGSDLSNFGAVPQQK KLQEELSDL SAMEDALDELKDCAQQLFELTDDKENERLAYVTYQDIHSI QAFHEQVI AVKAPAETRLDVPAPREDSITVHIRSTNGPIDVYLCEVEEQG QTSNKRSEG VGTSSSESTHPEGPEEEENPQQSEELLEVS N	
Predicted molecular weight	57 kDa	
Amino acids	1 to 281	

Specifications

Our **Abpromise guarantee** covers the use of **ab114573** in the following tested applications.

The application notes include recommended starting dilutions; optimal dilutions/concentrations should be determined by the end user.

Applications	SDS-PAGE
	Western blot
	ELISA
Form	Liquid

Preparation and Storage

Stability and Storage

Shipped on dry ice. Upon delivery aliquot and store at -80°C. Avoid freeze / thaw cycles.

pH: 8.00

Constituents: 0.3% Glutathione, 0.79% Tris HCl

General Info

Function

Inhibitor of E2F-dependent transcription. Binds DNA cooperatively with DP proteins through the E2 recognition site, 5'-TTTC[CG]CGC-3'. Has a preference for the 5'-TTTCCCGC-3' E2F recognition site. E2F-6 lacks the transcriptional activation and pocket protein binding domains. Appears to regulate a subset of E2F-dependent genes whose products are required for entry into the cell cycle but not for normal cell cycle progression. May silence expression via the recruitment of a chromatin remodeling complex containing histone H3-K9 methyltransferase activity. Overexpression delays the exit of cells from the S-phase.

Tissue specificity

Expressed in all tissues examined. Highest levels in placenta, skeletal muscle, heart, ovary, kidney, small intestine and spleen.

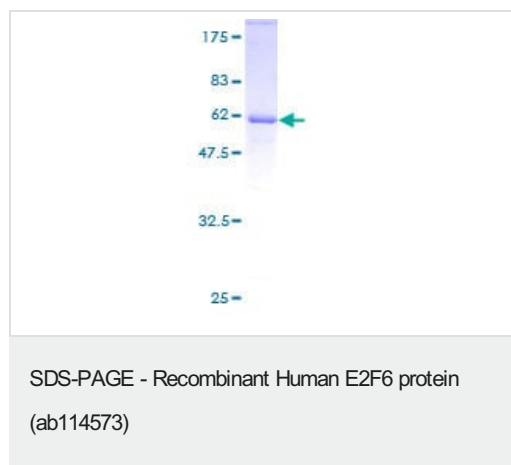
Sequence similarities

Belongs to the E2F/DP family.

Cellular localization

Nucleus.

Images



12.5% SDS-PAGE Stained with Coomassie Blue

Please note: All products are "FOR RESEARCH USE ONLY. NOT FOR USE IN DIAGNOSTIC PROCEDURES"

Our Abpromise to you: Quality guaranteed and expert technical support

- Replacement or refund for products not performing as stated on the datasheet
- Valid for 12 months from date of delivery
- Response to your inquiry within 24 hours
- We provide support in Chinese, English, French, German, Japanese and Spanish
- Extensive multi-media technical resources to help you
- We investigate all quality concerns to ensure our products perform to the highest standards

If the product does not perform as described on this datasheet, we will offer a refund or replacement. For full details of the Abpromise, please visit <https://www.abcam.com/abpromise> or contact our technical team.

Terms and conditions

- Guarantee only valid for products bought direct from Abcam or one of our authorized distributors