

Recombinant Human EDG2 /LPA-1 protein ab152354

1 Image

| Description                |   |
|----------------------------|---|
| Product name               | Recombinant Human EDG2 /LPA-1 protein   |
| Expression system          | Wheat germ  |
| Accession                  | <u>Q92633</u>   |
| Protein length             | Full length protein   |
| Animal free                | No  |
| Nature                     | Recombinant   |
| Species                    | Human   |
| Sequence                   | MAAISTSIPVISQPQFTAMNEPQCFYNESIAFFYNRSGKHLA<br>TEWNTVSK<br>LVMGLGITVCIFIMLANLLVMVAIVNRRFHFPIYLMANLAA<br>ADFFAGL<br>AYFYLMFNTGPNTRRLTVSTWLLRQGLIDTSLTASVANLLAI<br>AIERHITV<br>FRMQLHTRMSNRRVVVVIVWTMAIVMGAIPSVGWNCIC<br>DIENCSNMAP<br>LYSDSYLVFWAIFNLVTFVVMVVLYAHIFGYVRQRTMRMSR<br>HSSGPRRNR<br>DTMMSLLKTVVIVLGAFIICWTPGLVLLLLDVCCPQCDVLA<br>YEKFFLLLA<br>EFNSAMNPIIYSYRDKEMSATFRQILCCQRSENPTGPTEGS<br>DRSASSLNH TILAGVHSNDHSVV |
| Predicted molecular weight | 68 kDa including tags   |
| Amino acids                | 1 to 364  |

| Specifications   |   |
|--|---|
| Our <b>Abpromise guarantee</b> covers the use of <b>ab152354</b> in the following tested applications.                               |   |
| The application notes include recommended starting dilutions; optimal dilutions/concentrations should be determined by the end user. |   |
| Applications   | SDS-PAGE<br><br>ELISA<br><br>Western blot |
| Form   | Liquid                                    |

## Additional notes

This product was previously labelled as EDG2.

## Preparation and Storage

### Stability and Storage

Shipped on dry ice. Upon delivery aliquot and store at -80°C. Avoid freeze / thaw cycles.

pH: 8.00

Constituents: 0.31% Glutathione, 0.79% Tris HCl

## General Info

### Function

Receptor for lysophosphatidic acid (LPA), a mediator of diverse cellular activities. Seems to be coupled to the G(i)/G(o), G(12)/G(13), and G(q) families of heteromeric G proteins. Stimulates phospholipase C (PLC) activity in a manner that is dependent on RALA activation.

### Tissue specificity

Expressed in many adult organs, including brain, heart, colon, small intestine, placenta, prostate, ovary, pancreas, testes, spleen, skeletal muscle, and kidney. Little or no expression in liver, lung, thymus, or peripheral blood leukocytes.

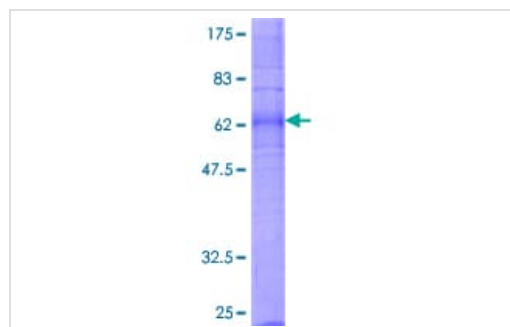
### Sequence similarities

Belongs to the G-protein coupled receptor 1 family.

### Cellular localization

Cell surface. Cell membrane. Prior to LPA treatment found predominantly at the cell surface but in the presence of LPA co-localizes with RALA in the endocytic vesicles.

## Images



12.5% SDS-PAGE analysis of ab152354 stained with Coomassie Blue.

SDS-PAGE - Recombinant Human EDG2 /LPA-1 protein (ab152354)

**Please note:** All products are "FOR RESEARCH USE ONLY. NOT FOR USE IN DIAGNOSTIC PROCEDURES"

## Our Abpromise to you: Quality guaranteed and expert technical support

- Replacement or refund for products not performing as stated on the datasheet
- Valid for 12 months from date of delivery
- Response to your inquiry within 24 hours
- We provide support in Chinese, English, French, German, Japanese and Spanish

- Extensive multi-media technical resources to help you
- We investigate all quality concerns to ensure our products perform to the highest standards

If the product does not perform as described on this datasheet, we will offer a refund or replacement. For full details of the Abpromise, please visit <https://www.abcam.com/abpromise> or contact our technical team.

#### **Terms and conditions**

---

- Guarantee only valid for products bought direct from Abcam or one of our authorized distributors