

Product datasheet

Recombinant Human EHD2 protein ab132288

[1 Image](#)

Description

Product name	Recombinant Human EHD2 protein
Expression system	Wheat germ
Accession	<u>Q9NZN4</u>
Protein length	Full length protein
Animal free	No
Nature	Recombinant
Species	Human

Sequence	MFSWLKRGGARGQQPEAIRTVTSALKELYRTKLLPLEEHY RFGAFHSPAL EDADFDGKPMVLVAGQYSTGKTSFIQYLLEQEVPGSRVG PEPTTDCFVAV MHGDTEGTVPGNALVVDPKPFRKLNPFNGTFLNRFMCA QLPNQVLESIS IIDTPGILSGAKQQRVSRGYDFPAVLRWFAERVDLILLFDAH KLEISDEF SEAIGALRGHEDKIRVVLNKADMVETQQLMRVYGALMWA LGKVVGTPEVL RVYIGSFWSQPLLVPDNRRLFEEEQDLFRDIQGLPRHAA LRKLNLDLVKR ARLVRVHAYIISYLKEMPSVFGKENKKKQLILKLPVIFAKIQ LEHHISP GDFPDCQKMQELLMAHDFTFHSLKPKLLEALDEMLTHD IAKLMPLLRQE ELESTEVGVQGGAFEGTHMGPFVERGPDEAMEDGEEGS DDEAEWVTKDK SKYDEIFYNLAPADGKLSGSKAKTWMVGTCLPNSVLGRW KLSDVDRDGM LDDEEFALASHLIEAKLEGHGLPANLPRRLVPPSKRRHKG SAE
-----------------	--

Predicted molecular weight	88 kDa including tags
Amino acids	1 to 543

Specifications

Our **Abpromise guarantee** covers the use of **ab132288** in the following tested applications.

The application notes include recommended starting dilutions; optimal dilutions/concentrations should be determined by the end user.

Applications	ELISA SDS-PAGE Western blot
Form	Liquid

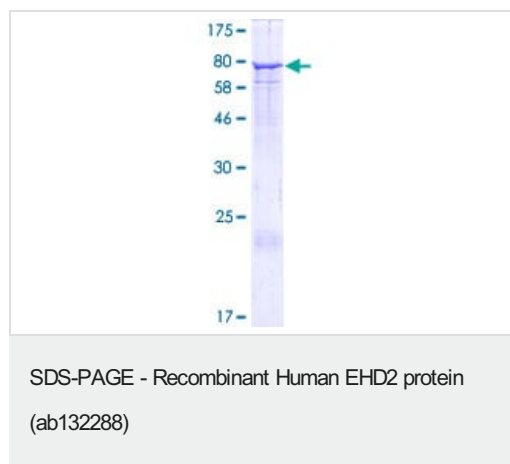
Preparation and Storage

Stability and Storage	Shipped on dry ice. Upon delivery aliquot and store at -80°C. Avoid freeze / thaw cycles. pH: 8.00 Constituents: 0.31% Glutathione, 0.79% Tris HCl
------------------------------	--

General Info

Function	Plays a role in membrane reorganization in response to nucleotide hydrolysis. Binds to liposomes and deforms them into tubules. Plays a role in membrane trafficking between the plasma membrane and endosomes. Important for the internalization of GLUT4. Required for normal fusion of myoblasts to skeletal muscle myotubes. Binds ATP; does not bind GTP.
Tissue specificity	Highly expressed in heart and moderately expressed in placenta, lung, and skeletal muscle.
Sequence similarities	Contains 1 EF-hand domain. Contains 1 EH domain.
Domain	The EH domain interacts with Asn-Pro-Phe (NPF) motifs of target proteins.
Cellular localization	Cell membrane. Endosome membrane. Colocalizes with GLUT4 in intracellular tubulovesicular structures that are associated with cortical F-actin.

Images



12.5% SDS-PAGE stained with Coomassie Blue showing ab132288.

Please note: All products are "FOR RESEARCH USE ONLY. NOT FOR USE IN DIAGNOSTIC PROCEDURES"

Our Abpromise to you: Quality guaranteed and expert technical support

- Replacement or refund for products not performing as stated on the datasheet
- Valid for 12 months from date of delivery
- Response to your inquiry within 24 hours

- We provide support in Chinese, English, French, German, Japanese and Spanish
- Extensive multi-media technical resources to help you
- We investigate all quality concerns to ensure our products perform to the highest standards

If the product does not perform as described on this datasheet, we will offer a refund or replacement. For full details of the Abpromise, please visit <https://www.abcam.com/abpromise> or contact our technical team.

Terms and conditions

- Guarantee only valid for products bought direct from Abcam or one of our authorized distributors