

Product datasheet

Recombinant Human ELP-1 protein ab161241

1 Image

Description

Product name	Recombinant Human ELP-1 protein
Expression system	Wheat germ
Protein length	Full length protein
Animal free	No
Nature	Recombinant
Species	Human
Sequence	MNIFRLTGDLSHLAAMILLKKWKTRSCAGISGKSQLLFALV FTTRYLD LFTSFISLYNTSMKVIYLACSYATVYLMYLFKATYDGNHDTF RVEFLVV PVGGLSFLVNHDFSPLEILWTFSMYLESVAILPQLFMISKTG EAETITTH YLFFLGLYRALYLVNWMWRFYFEGFFDLIAVVAGVVQTILYC DFFYLYIT KVLKGKKLSLPA
Amino acids	1 to 212
Tags	GST tag N-Terminus

Specifications

Our **Abpromise guarantee** covers the use of **ab161241** in the following tested applications.

The application notes include recommended starting dilutions; optimal dilutions/concentrations should be determined by the end user.

Applications	Western blot ELISA
Form	Liquid
Additional notes	This product was previously labelled as KDELR2.

Preparation and Storage

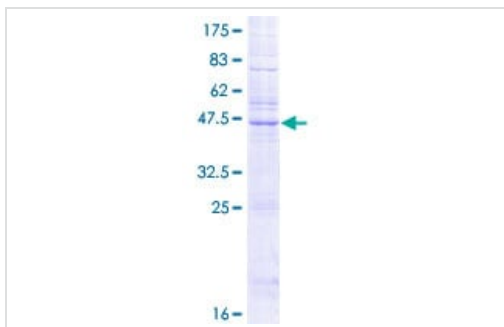
Stability and Storage	Shipped on dry ice. Upon delivery aliquot and store at -80°C. Avoid freeze / thaw cycles. pH: 8.00
------------------------------	---

Constituents: 0.31% Glutathione, 0.79% Tris HCl

General Info

Function	Required for the retention of luminal endoplasmic reticulum proteins. Determines the specificity of the luminal ER protein retention system. Also required for normal vesicular traffic through the Golgi. This receptor recognizes K-D-E-L.
Sequence similarities	Belongs to the ERD2 family.
Cellular localization	Endoplasmic reticulum membrane.

Images



ab161241 on a 12.5% SDS-PAGE stained with Coomassie Blue.

SDS-PAGE - Recombinant Human ELP-1 protein
(ab161241)

Please note: All products are "FOR RESEARCH USE ONLY. NOT FOR USE IN DIAGNOSTIC PROCEDURES"

Our Abpromise to you: Quality guaranteed and expert technical support

- Replacement or refund for products not performing as stated on the datasheet
- Valid for 12 months from date of delivery
- Response to your inquiry within 24 hours
- We provide support in Chinese, English, French, German, Japanese and Spanish
- Extensive multi-media technical resources to help you
- We investigate all quality concerns to ensure our products perform to the highest standards

If the product does not perform as described on this datasheet, we will offer a refund or replacement. For full details of the Abpromise, please visit <https://www.abcam.com/abpromise> or contact our technical team.

Terms and conditions

- Guarantee only valid for products bought direct from Abcam or one of our authorized distributors