

Product datasheet

Recombinant Human EMILIN1 protein ab116414

[1 Image](#)

Description

Product name	Recombinant Human EMILIN1 protein
Purity	> 95 % SDS-PAGE.
Expression system	Escherichia coli
Accession	<u>Q9Y6C2</u>
Protein length	Protein fragment
Animal free	No
Nature	Recombinant
Species	Human
Predicted molecular weight	39 kDa including tags
Amino acids	676 to 1016

Specifications

Our **[Abpromise guarantee](#)** covers the use of **ab116414** in the following tested applications.

The application notes include recommended starting dilutions; optimal dilutions/concentrations should be determined by the end user.

Applications	Western blot ELISA SDS-PAGE Mass Spectrometry
Mass spectrometry	MALDI-TOF-TOF
Form	Liquid

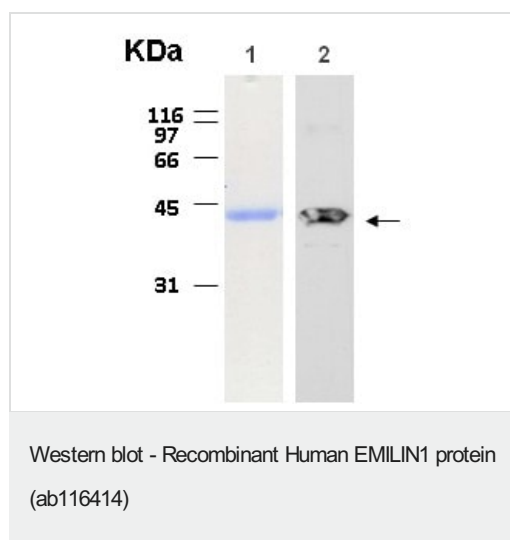
Preparation and Storage

Stability and Storage	Shipped on dry ice. Upon delivery aliquot and store at -80°C. Avoid freeze / thaw cycles. pH: 7.40 Constituent: 99% PBS
------------------------------	---

General Info

Function	May be responsible for anchoring smooth muscle cells to elastic fibers, and may be involved not only in the formation of the elastic fiber, but also in the processes that regulate vessel assembly. Has cell adhesive capacity.
Tissue specificity	Distributed in tissues where resilience and elastic recoil are prominent. Highest levels in the adult small intestine, aorta, lung, uterus, and appendix and in the fetal spleen, kidney, lung, and heart; intermediate expression was detected in adult liver, ovary, colon, stomach, lymph node and spleen; adult heart, bladder, prostate, adrenal gland, mammary gland, placenta and kidney showed low expression whereas a series of other adult tissues, including skeletal muscle and different regions of adult brain show no expression.
Sequence similarities	Contains 1 C1q domain. Contains 1 collagen-like domain. Contains 1 EMI domain.
Cellular localization	Secreted > extracellular space > extracellular matrix. Found mainly at the interface between amorphous elastin and microfibrils.

Images



10% SDS-PAGE stained with Coomassie Blue (Lane 1),
immunoblotting with anti-6xHis (Lane 2)

Please note: All products are "FOR RESEARCH USE ONLY. NOT FOR USE IN DIAGNOSTIC PROCEDURES"

Our Abpromise to you: Quality guaranteed and expert technical support

- Replacement or refund for products not performing as stated on the datasheet
- Valid for 12 months from date of delivery
- Response to your inquiry within 24 hours
- We provide support in Chinese, English, French, German, Japanese and Spanish
- Extensive multi-media technical resources to help you
- We investigate all quality concerns to ensure our products perform to the highest standards

If the product does not perform as described on this datasheet, we will offer a refund or replacement. For full details of the Abpromise, please visit <https://www.abcam.com/abpromise> or contact our technical team.

Terms and conditions

- Guarantee only valid for products bought direct from Abcam or one of our authorized distributors