

Recombinant Human ENPP3/B10 protein ab159085

1 Image

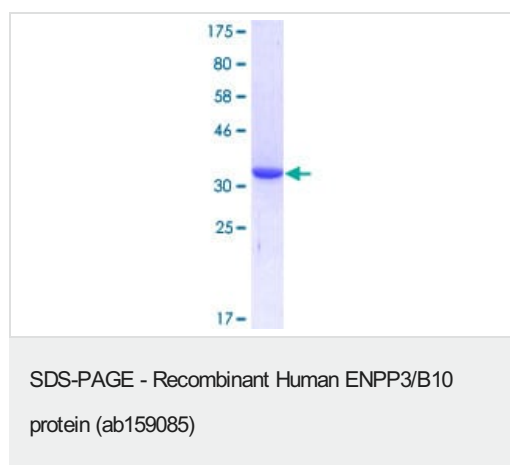
Description	
Product name	Recombinant Human ENPP3/B10 protein
Expression system	Wheat germ
Protein length	Protein fragment
Animal free	No
Nature	Recombinant
Species	Human
Sequence	ATVKVNLPFGRPRVLQKNVDHCLLYHREYVSGFGKAMRM PMWSSYTPQL GDT SPLPPTVPDCLRADVRVPPSESQKCSFY LADKNITH GFLYPASN
Amino acids	602 to 699
Tags	GST tag N-Terminus

Specifications	
Our Abpromise guarantee covers the use of ab159085 in the following tested applications.	
The application notes include recommended starting dilutions; optimal dilutions/concentrations should be determined by the end user.	
Applications	ELISA Western blot
Form	Liquid
Additional notes	This product was previously labelled as ENPP3.

Preparation and Storage	
Stability and Storage	Shipped on dry ice. Upon delivery aliquot and store at -80°C. Avoid freeze / thaw cycles. pH: 8.00 Constituents: 0.31% Glutathione, 0.79% Tris HCl

Function	Cleaves a variety of phosphodiester and phosphosulfate bonds including deoxynucleotides, nucleotide sugars, and NAD.
Tissue specificity	Expressed in bile ducts, prostate, uterus and colon. Exclusively expressed on basophils, mast cells and their progenitors.
Sequence similarities	Belongs to the nucleotide pyrophosphatase/phosphodiesterase family. Contains 2 SMB (somatomedin-B) domains.
Post-translational modifications	N-glycosylation is necessary for correct trafficking to the apical surface, but is not the apical targeting signal. It has been suggested that the active SMB domain may be permitted considerable disulfide bond heterogeneity or variability, thus two alternate disulfide patterns based on 3D structures are described with 1 disulfide bond conserved in both.
Cellular localization	Membrane. Secreted. Located to the apical surface in intestinal and kidney epithelial cells. Located to the cell surface of basophils, and to the apical plasma membrane of bile duct cells. Secreted in serum, and in lumen of epithelial cells.

Images



ab159085 on a 12.5% SDS-PAGE stained with Coomassie Blue.

Please note: All products are "FOR RESEARCH USE ONLY. NOT FOR USE IN DIAGNOSTIC PROCEDURES"

Our Abpromise to you: Quality guaranteed and expert technical support

- Replacement or refund for products not performing as stated on the datasheet
- Valid for 12 months from date of delivery
- Response to your inquiry within 24 hours
- We provide support in Chinese, English, French, German, Japanese and Spanish
- Extensive multi-media technical resources to help you
- We investigate all quality concerns to ensure our products perform to the highest standards

If the product does not perform as described on this datasheet, we will offer a refund or replacement. For full details of the Abpromise, please visit <https://www.abcam.com/abpromise> or contact our technical team.

Terms and conditions

- Guarantee only valid for products bought direct from Abcam or one of our authorized distributors