

Product datasheet

Recombinant human Eph receptor B2 protein ab205990

[2 Images](#)

Description

Product name	Recombinant human Eph receptor B2 protein
Biological activity	The specific activity of ab205990 was determined to be 220 nmol/min/mg.
Purity	> 95 % Densitometry. Affinity purified.
Expression system	Baculovirus infected Sf9 cells
Accession	<u>P29323-3</u>
Protein length	Protein fragment
Animal free	No
Nature	Recombinant
Species	Human
Sequence	REFAKEIDISCVKIEQVIGAGEFGEVCSGHLKLP GKREIFVA IKTLKSGY TEKQRRDFLSEASIMGQFDHPNVIHLEGVVTKSTPVMITEF MENGLSDS FLRQNDGQFTVIQLVGMLRGAAGMKYLADMNYVHRDLAA RNILVNSNLV CKVSDFGLSRFLEDDTSDPTYTSALGGKIPRWTAPEAIQY RKFTSASDV WSYGVMWEVMSYGERPYWDMTNQDVINAIEQDYRLPPP MDCPSALHQLM LDCWQKDRNHRPKFGQIVNTLDKMIRNPNSLKA
Predicted molecular weight	56 kDa including tags
Amino acids	611 to 893
Tags	GST tag N-Terminus
Additional sequence information	NM_004442

Specifications

Our **Abpromise guarantee** covers the use of **ab205990** in the following tested applications.

The application notes include recommended starting dilutions; optimal dilutions/concentrations should be determined by the end user.

Applications Functional Studies

SDS-PAGE

Form Liquid

Preparation and Storage

Stability and Storage

Shipped on Dry Ice. Upon delivery aliquot. Store at -80°C. Avoid freeze / thaw cycle.

pH: 7.50

Constituents: 0.79% Tris HCl, 0.87% Sodium chloride, 0.31% Glutathione, 0.003% EDTA, 0.004% DTT, 0.002% PMSF, 25% Glycerol (glycerin, glycerine)

This product is an active protein and may elicit a biological response in vivo, handle with caution.

General Info

Function

Receptor for members of the ephrin-B family. Phosphorylates ARHGEF15, leading to its ubiquitination and degradation by the proteasome which promotes EFNB1-dependent synapse formation. Can function in aspects of retinal ganglion cell axon guidance to the optic disk even when lacking its tyrosine kinase domain. Acts as a tumor suppressor.

Tissue specificity

Brain, heart, lung, kidney, placenta, pancreas, liver and skeletal muscle. Preferentially expressed in fetal brain.

Involvement in disease

Defects in EPHB2 may be a cause of susceptibility to prostate cancer (PC) [MIM:176807]. It is a malignancy originating in tissues of the prostate. Most prostate cancers are adenocarcinomas that develop in the acini of the prostatic ducts. Other rare histopathologic types of prostate cancer that occur in approximately 5% of patients include small cell carcinoma, mucinous carcinoma, prostatic ductal carcinoma, transitional cell carcinoma, squamous cell carcinoma, basal cell carcinoma, adenoid cystic carcinoma (basaloid), signet-ring cell carcinoma and neuroendocrine carcinoma. Note=EPHB2 mutations have been found in a prostate cancer cell line derived from a brain metastasis.

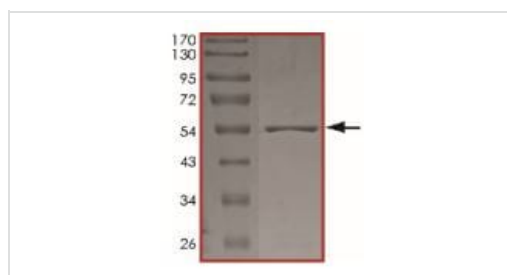
Sequence similarities

Belongs to the protein kinase superfamily. Tyr protein kinase family. Ephrin receptor subfamily. Contains 2 fibronectin type-III domains. Contains 1 protein kinase domain. Contains 1 SAM (sterile alpha motif) domain.

Cellular localization

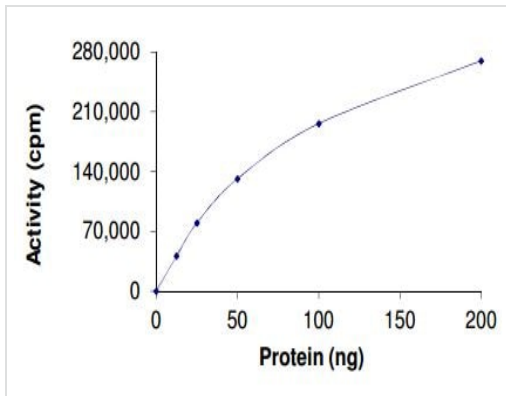
Membrane.

Images



SDS-PAGE analysis of ab205990.

SDS-PAGE - Recombinant human Eph receptor B2 protein (ab205990)



Sample Kinase Activity Plot. The specific activity of ab205990 was determined to be 220 nmol/min/mg.

Functional Studies - Recombinant human Eph receptor B2 protein (ab205990)

Please note: All products are "FOR RESEARCH USE ONLY. NOT FOR USE IN DIAGNOSTIC PROCEDURES"

Our Abpromise to you: Quality guaranteed and expert technical support

- Replacement or refund for products not performing as stated on the datasheet
- Valid for 12 months from date of delivery
- Response to your inquiry within 24 hours
- We provide support in Chinese, English, French, German, Japanese and Spanish
- Extensive multi-media technical resources to help you
- We investigate all quality concerns to ensure our products perform to the highest standards

If the product does not perform as described on this datasheet, we will offer a refund or replacement. For full details of the Abpromise, please visit <https://www.abcam.com/abpromise> or contact our technical team.

Terms and conditions

- Guarantee only valid for products bought direct from Abcam or one of our authorized distributors