

Product datasheet

Recombinant Human Epoxide hydrolase protein
ab114694

1 Image

Description	
Product name	Recombinant Human Epoxide hydrolase protein
Expression system	Wheat germ
Accession	<u>P07099</u>
Protein length	Full length protein
Animal free	No
Nature	Recombinant
Species	Human
Sequence	MWLEILLTSVLGFAMWFI SRDKEETLPLEDGWWGPGTRS AAREDD SIRP FKVETSDEEIHDLHQRI DKFRFTPPLEDSCFHYGFNSNYLK KVISYWRNE FDWKKQVEILNRYPHFKTKIEGLDIHFIHV KPPQLPAGHTPK PLLMVHGW PGSFYEFYKI IPLLTDPKNHGLSDEHVFEVICPSIPGYGFSE ASSKKGFN SVATARIFYKLMLRLGFQEFYIQGGDWGSLICTNMAQLVPS HVKGLHLNM ALVLSNFSTLTLLGQRFGRFLGLTERDVELLYPVKEKV FY SLMRESGYM HIQCTKPDTVGSALNDSPVGLAAYILEKFSTWTNTEFRYLE DGGLERKFS LDDLLTNVMLYWTTGTI SSQRFYKENLGQGWM TQKHERM KVYVPTGFSA FPFELLHTPEKWVRFKY PKLISYSYMVRGGHFAAFEEPEL LAQDIRKFLS VLERQ
Predicted molecular weight	76 kDa including tags
Amino acids	1 to 455
Tags	GST tag N-Terminus

Specifications

Our **Abpromise guarantee** covers the use of **ab114694** in the following tested applications.

The application notes include recommended starting dilutions; optimal dilutions/concentrations should be determined by the end user.

Applications	ELISA
	SDS-PAGE
	Western blot
Form	Liquid

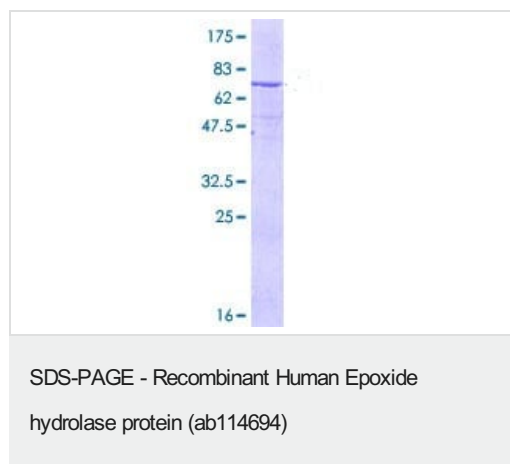
Preparation and Storage

Stability and Storage	Shipped on dry ice. Upon delivery aliquot and store at -80°C. Avoid freeze / thaw cycles.
	pH: 8.00
	Constituents: 0.3% Glutathione, 0.79% Tris HCl

General Info

Function	Biotransformation enzyme that catalyzes the hydrolysis of arene and aliphatic epoxides to less reactive and more water soluble dihydrodiols by the trans addition of water.
Tissue specificity	Found in liver.
Involvement in disease	Note=In some populations, the high activity haplotype tyr113/his139 is overrepresented among women suffering from pregnancy-induced hypertension (pre-eclampsia) when compared with healthy controls. Defects in EPHX1 are a cause of familial hypercholanemia (FHCA) [MIM:607748]. FHCA is a disorder characterized by elevated serum bile acid concentrations, itching, and fat malabsorption.
Sequence similarities	Belongs to the peptidase S33 family.
Cellular localization	Microsome membrane. Endoplasmic reticulum membrane.

Images



12.5% SDS-PAGE showing ab114694 at approximately 76.12 kDa stained with Coomassie Blue.

Please note: All products are "FOR RESEARCH USE ONLY. NOT FOR USE IN DIAGNOSTIC PROCEDURES"

Our Abpromise to you: Quality guaranteed and expert technical support

- Replacement or refund for products not performing as stated on the datasheet
- Valid for 12 months from date of delivery
- Response to your inquiry within 24 hours

- We provide support in Chinese, English, French, German, Japanese and Spanish
- Extensive multi-media technical resources to help you
- We investigate all quality concerns to ensure our products perform to the highest standards

If the product does not perform as described on this datasheet, we will offer a refund or replacement. For full details of the Abpromise, please visit <https://www.abcam.com/abpromise> or contact our technical team.

Terms and conditions

- Guarantee only valid for products bought direct from Abcam or one of our authorized distributors