

Product datasheet

Recombinant human ErbB2 / HER2 (mutated G776V + G776C) protein (Cytoplasmic domain) ab191466

[5 Images](#)

Description

Product name	Recombinant human ErbB2 / HER2 (mutated G776V + G776C) protein (Cytoplasmic domain)
Biological activity	Specific activity: 5 nmol/min/mg.
Purity	> 75 % SDS-PAGE. Affinity purified.
Expression system	Baculovirus infected Sf9 cells
Accession	<u>P04626</u>
Protein length	Protein fragment
Animal free	No
Nature	Recombinant
Species	Human
Sequence	KRRQQKIRKYTMRRLLQETELVEPLTPSGAMPNQAQMRIL KETELRKVKV LGSGAFGTVY KGMWIPDGENVKIPVAIKVIRENTSPKANKEILDEAYV MAGVGSPYVSRLLGICLTSTVQ LVTQLMPYGCLLDHVRNRGRLGSQD LLNWCMQIAKGMSYLEDVRLVHRDLAARNVLVKS PNHVKITDFGLARL LDIDETEHADGGKVPIKWMALESILRRRFTHQSDVWSYG VTVWEL MT FGAKPYDGIPAREIPDLLEKGERLPQPPICIDVYMIMVKC WMIDSECRP RFRELVSE FSRMARDPQRFVVIQNE DLGPASPLDSTFYRSLLEDDDM G DLVDAEEYLVPQQGFFCPDP APGAGGMVHHRHRSSSTRSGGDLTLGL EPSEEEAPRSPLAPSEGAGSDVFDGDLGMGAA KGLQSLPTHDPSPPLQR YSEDPTVPLPSETDGVAPLTCSPQPEYVNQPDVRPQPP SPREG PLPA ARPAGATLERPKTLSPGKNGVVKDVFAFGGAVENPEYLT PQGGAAPQPHP PPAFSP AFDNLYYWDQDPPERGAPPSTFKGTPTAENPEYLGLDV V

Predicted molecular weight	115 kDa including tags
Amino acids	676 to 1255
Modifications	mutated G776V + G776C
Tags	proprietary tag N-Terminus
Additional sequence information	Cytoplasmic domain.

Specifications

Our **Abpromise guarantee** covers the use of **ab191466** in the following tested applications.

The application notes include recommended starting dilutions; optimal dilutions/concentrations should be determined by the end user.

Applications	Functional Studies SDS-PAGE
Form	Liquid

Preparation and Storage

Stability and Storage	Shipped on Dry Ice. Upon delivery aliquot. Store at -80°C. Avoid freeze / thaw cycle. pH: 7.50 Constituents: 0.79% Tris HCl, 0.87% Sodium chloride, 0.307% Glutathione, 0.00292% EDTA, 0.00385% DTT, 25% Glycerol (glycerin, glycerine), 0.002% PMSF This product is an active protein and may elicit a biological response in vivo, handle with caution.
------------------------------	--

General Info

Function	Protein tyrosine kinase that is part of several cell surface receptor complexes, but that apparently needs a coreceptor for ligand binding. Essential component of a neuregulin-receptor complex, although neuregulins do not interact with it alone. GP30 is a potential ligand for this receptor. Regulates outgrowth and stabilization of peripheral microtubules (MTs). Upon ERBB2 activation, the MEMO1-RHOA-DIAPH1 signaling pathway elicits the phosphorylation and thus the inhibition of GSK3B at cell membrane. This prevents the phosphorylation of APC and CLASP2, allowing its association with the cell membrane. In turn, membrane-bound APC allows the localization of MACF1 to the cell membrane, which is required for microtubule capture and stabilization. In the nucleus is involved in transcriptional regulation. Associates with the 5'-TCAAATTC-3' sequence in the PTGS2/COX-2 promoter and activates its transcription. Implicated in transcriptional activation of CDKN1A; the function involves STAT3 and SRC. Involved in the transcription of rRNA genes by RNA Pol I and enhances protein synthesis and cell growth.
Tissue specificity	Expressed in a variety of tumor tissues including primary breast tumors and tumors from small bowel, esophagus, kidney and mouth.
Involvement in disease	Hereditary diffuse gastric cancer Glioma Ovarian cancer Lung cancer Gastric cancer Chromosomal aberrations involving ERBB2 may be a cause gastric cancer. Deletions within 17q12 region producing fusion transcripts with CDK12, leading to CDK12-ERBB2 fusion leading to truncated CDK12 protein not in-frame with ERBB2.

Sequence similarities

Belongs to the protein kinase superfamily. Tyr protein kinase family. EGF receptor subfamily. Contains 1 protein kinase domain.

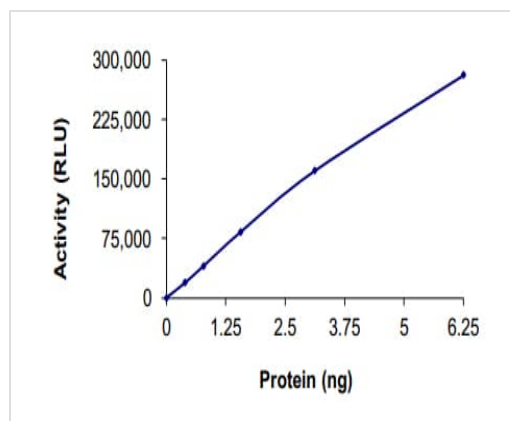
Post-translational modifications

Autophosphorylated. Autophosphorylation occurs in trans, i.e. one subunit of the dimeric receptor phosphorylates tyrosine residues on the other subunit (Probable). Ligand-binding increases phosphorylation on tyrosine residues (PubMed:27134172). Signaling via SEMA4C promotes phosphorylation at Tyr-1248 (PubMed:17554007). Dephosphorylated by PTPN12 (PubMed:27134172).

Cellular localization

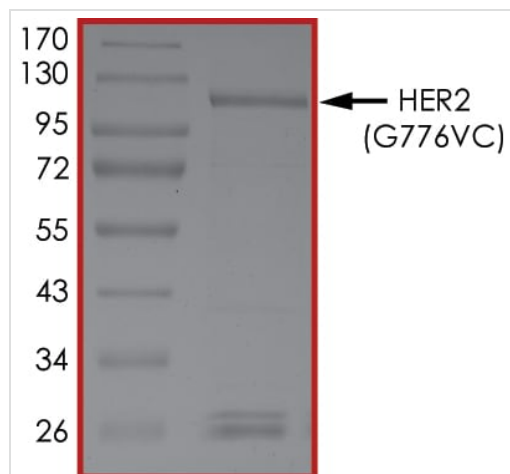
Cytoplasm. Nucleus and Cell membrane. Cytoplasm, perinuclear region. Nucleus. Translocation to the nucleus requires endocytosis, probably endosomal sorting and is mediated by importin beta-1/KPNB1.

Images



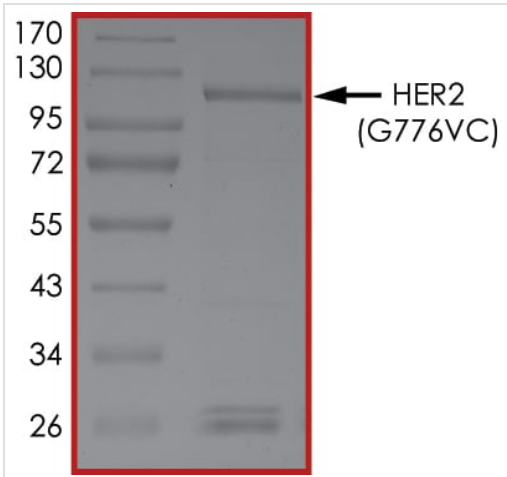
The specific activity of ErbB2 / HER2 (ab191466) was determined to be 175 nmol/min/mg as per activity assay protocol and was equivalent to 6 nmol/min/mg as per radiometric assay

Functional Studies - Recombinant human ErbB2 / HER2 (mutated G776V + G776C) protein (Cytoplasmic domain) (ab191466)



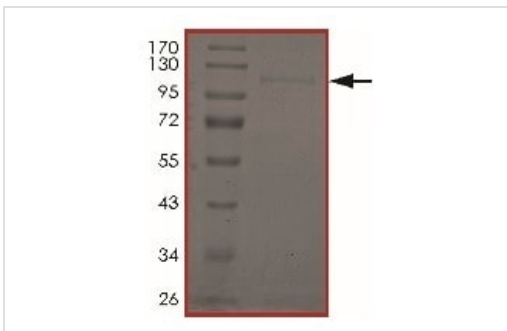
SDS PAGE analysis of ab191466

SDS-PAGE - Recombinant human ErbB2 / HER2 (mutated G776V + G776C) protein (Cytoplasmic domain) (ab191466)



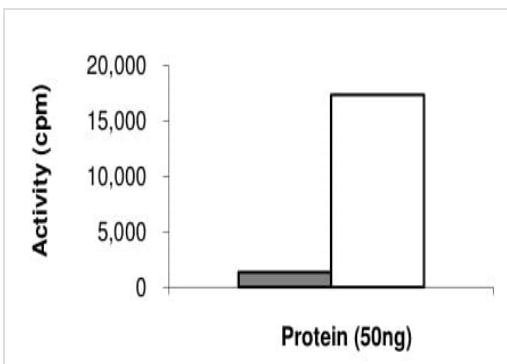
SDS PAGE analysis of ab191466

SDS-PAGE - Recombinant human ErbB2 / HER2 (mutated G776V + G776C) protein (Cytoplasmic domain) (ab191466)



SDS-PAGE of ErbB 2 (mutated G776 VC). Approx MW 115 kDa.

SDS-PAGE - Recombinant human ErbB2 / HER2 (mutated G776V + G776C) protein (Cytoplasmic domain) (ab191466)



Specific Activity: Sample Kinase Activity Plot. ErbB 2 (mutated G776 VC) activity assay with or without substrate Poly (Glu:Tyr, 4:1) peptide. The specific activity of ErbB2 / HER2 (mutated G776 VC) was determined to be 5 nmol /min/mg.

Functional Studies - Recombinant human ErbB2 / HER2 (mutated G776V + G776C) protein (Cytoplasmic domain) (ab191466)

Please note: All products are "FOR RESEARCH USE ONLY. NOT FOR USE IN DIAGNOSTIC PROCEDURES"

Our Abpromise to you: Quality guaranteed and expert technical support

- Replacement or refund for products not performing as stated on the datasheet
- Valid for 12 months from date of delivery
- Response to your inquiry within 24 hours

- We provide support in Chinese, English, French, German, Japanese and Spanish
- Extensive multi-media technical resources to help you
- We investigate all quality concerns to ensure our products perform to the highest standards

If the product does not perform as described on this datasheet, we will offer a refund or replacement. For full details of the Abpromise, please visit <https://www.abcam.com/abpromise> or contact our technical team.

Terms and conditions

- Guarantee only valid for products bought direct from Abcam or one of our authorized distributors