

Product datasheet

Recombinant Human Estrogen Related Receptor gamma protein ab152371

[1 References](#) [1 Image](#)

Description

Product name	Recombinant Human Estrogen Related Receptor gamma protein
Expression system	Wheat germ
Accession	<u>P62508-2</u>
Protein length	Full length protein
Animal free	No
Nature	Recombinant
Species	Human
Sequence	MSNKDRHIDSSCSSFIKTEPSSPASLTDSVNHHSPPGGSS DASGSYSSTMN GHQNGLDSPPLYPAPILGGSGPVRKLYDDCSSTVEDPQ TKCEYMLNSM PKRLCLVCGDIASGYHYGVASCEACKAFFKRTIQGNEIYSC PATNECEIT KRRRKSCQACRFMKCLKVGMKEGVRLDRVRGGRQKYK RRIDAENSPYLN PQLVQPAKKPYNKIVSHLLVAEPEKIYAMPDPTVPDSDIKA LTTLCDLAD RELVVIIGWAKHIPGFSTLSLADQMSLLQSAWMEILIGVVY RSLSFED LVYADDYIMDEDQSKLAGLLDLNNAIQLVKKYKSMKLEKE EFVTLKAIA LANSDSMHIEDVEAVQKLQDVLHEALQDYEAGQHMEDPR RAGKMLMTLPL LRQTSTKAVQHFYNIKLEGKVPMHKLFLEMLEAKV
Predicted molecular weight	75 kDa including tags
Amino acids	1 to 435
Tags	GST tag N-Terminus

Specifications

Our **Abpromise guarantee** covers the use of **ab152371** in the following tested applications.

The application notes include recommended starting dilutions; optimal dilutions/concentrations should be determined by the end user.

Applications	ELISA Western blot SDS-PAGE
Form	Liquid
Additional notes	

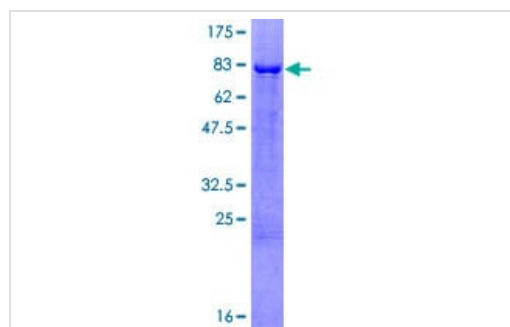
Preparation and Storage

Stability and Storage	Shipped on dry ice. Upon delivery aliquot and store at -80°C. Avoid freeze / thaw cycles. pH: 8.00 Constituents: 0.31% Glutathione, 0.79% Tris HCl
------------------------------	--

General Info

Function	Orphan receptor that acts as transcription activator in the absence of bound ligand. Binds specifically to an estrogen response element and activates reporter genes controlled by estrogen response elements.
Tissue specificity	Expressed in the heart, kidney, brain, lung, bone marrow, adrenal gland, trachea, spinal cord and thyroid gland.
Sequence similarities	Belongs to the nuclear hormone receptor family. NR3 subfamily. Contains 1 nuclear receptor DNA-binding domain.
Developmental stage	Expressed at high levels in fetal brain and also in the fetal kidney, lung and liver.
Post-translational modifications	Sumoylation on Lys-40 is enhanced by phosphorylation at Ser-45 and represses transcriptional activity. Phosphorylation on Ser-45 enhances sumoylation on Lys-40 thus repressing transcriptional activity.
Cellular localization	Nucleus.

Images



12.5% SDS-PAGE analysis of ab152371 stained with Coomassie Blue.

SDS-PAGE - Recombinant Human Estrogen
Related Receptor gamma protein (ab152371)

Please note: All products are "FOR RESEARCH USE ONLY. NOT FOR USE IN DIAGNOSTIC PROCEDURES"

Our Abpromise to you: Quality guaranteed and expert technical support

- Replacement or refund for products not performing as stated on the datasheet
- Valid for 12 months from date of delivery
- Response to your inquiry within 24 hours

- We provide support in Chinese, English, French, German, Japanese and Spanish
- Extensive multi-media technical resources to help you
- We investigate all quality concerns to ensure our products perform to the highest standards

If the product does not perform as described on this datasheet, we will offer a refund or replacement. For full details of the Abpromise, please visit <https://www.abcam.com/abpromise> or contact our technical team.

Terms and conditions

- Guarantee only valid for products bought direct from Abcam or one of our authorized distributors