

Recombinant Human FCN3 protein ab160086

[1 References](#) [1 Image](#)

Description

Product name	Recombinant Human FCN3 protein
Expression system	Wheat germ
Accession	<u>O75636</u>
Protein length	Full length protein
Animal free	No
Nature	Recombinant
Species	Human
Sequence	MDLLWLPSLWLLLLGGPACLKTQEHPSCPGPRELEASK VVLLPSCPGAP GSPGEKGAPGPQGPPGPPGKMGPKGEPGPRNCRELLS QGATLSGWYHLCL PEGRALPVFCMDMTEGGWLVFQRRQDGSVDFFRSWS SYRAGFGNQSEF WLGNNLHQLTLQGNWELRVELEDFNGNRTFAHYATFRL LGEVDHYQLAL GKFSEGTAGDSLHLHSGRPLTTYDADHDSSNSNCAVMH GAWWYASCYRS NLNGRYAVSEAAAHKYGIDWASGRGVGHPYRRVRMMLR
Amino acids	1 to 288
Tags	GST tag N-Terminus

Specifications

Our **Abpromise guarantee** covers the use of **ab160086** in the following tested applications.

The application notes include recommended starting dilutions; optimal dilutions/concentrations should be determined by the end user.

Applications	ELISA Western blot
Form	Liquid
Additional notes	

Preparation and Storage

Stability and Storage

Shipped on dry ice. Upon delivery aliquot and store at -80°C. Avoid freeze / thaw cycles.

pH: 8.00

Constituents: 0.31% Glutathione, 0.79% Tris HCl

General Info

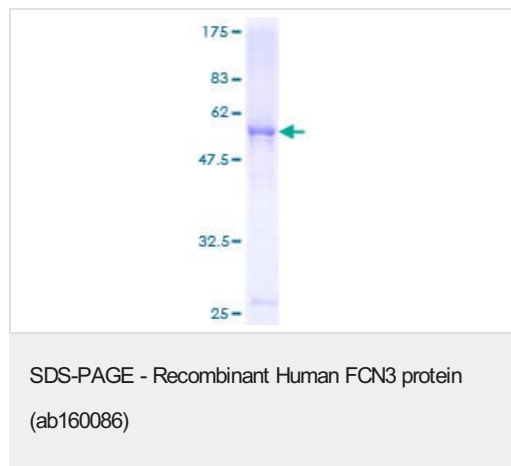
Relevance

FCN3 (Ficolin 3) is involved in the serum exerting lectin activity. In human serum, there are two types of ficolins, both of which have lectin activity. FCN3 is a thermolabile beta 2 macroglycoprotein found in all human serum and is a member of the ficolin/opsonin p35 lectin family. It can activate the complement pathway in association with MASPs and sMAP, thereby aiding in host defense through the activation of the lectin pathway.

Cellular localization

Secreted. Note: Found in blood plasma, bronchus, alveolus and bile duct.

Images



ab160086 on a 12.5% SDS-PAGE stained with Coomassie Blue.

Please note: All products are "FOR RESEARCH USE ONLY. NOT FOR USE IN DIAGNOSTIC PROCEDURES"

Our Abpromise to you: Quality guaranteed and expert technical support

- Replacement or refund for products not performing as stated on the datasheet
- Valid for 12 months from date of delivery
- Response to your inquiry within 24 hours
- We provide support in Chinese, English, French, German, Japanese and Spanish
- Extensive multi-media technical resources to help you
- We investigate all quality concerns to ensure our products perform to the highest standards

If the product does not perform as described on this datasheet, we will offer a refund or replacement. For full details of the Abpromise, please visit <https://www.abcam.com/abpromise> or contact our technical team.

Terms and conditions

- Guarantee only valid for products bought direct from Abcam or one of our authorized distributors