

Product datasheet

Recombinant human FKBP25 protein ab93683

1 Image

Description	
Product name	Recombinant human FKBP25 protein
Biological activity	Biological activity: Specific activity is > 900nmol/min/mg, and is defined as the amount of enzyme that cleaves 1nmol of suc-AAPF-pNA per minute at 37C in Tris-HCl pH 8.0 using chymotrypsin
Purity	> 90 % SDS-PAGE. ab93683 is purified using conventional chromatography techniques.
Expression system	Escherichia coli
Protein length	Full length protein
Animal free	No
Nature	Recombinant
Species	Human
Sequence	MAAAVPQRAWTVEQLRSEQLPKKDIKFLQEHSFLAE HKLLGNIKNV AKTANKDHLVTAYNHLFETKRFGTESISKVSEQVKNVKL NEDKPKETKS EETLDEGPPKYTKSVLKKGDKTNFPKKGDVVHCWYTGL QDGTVFDTNIQ TSAKKKKNAKPSFKVGVGKVIRGWDEALLTMSKGEKARL EIEPEWAYGKK GQPDAKIPPNAKLTFEVELVDID

Specifications	
Our <b>Abpromise guarantee</b> covers the use of <b>ab93683</b> in the following tested applications.	
The application notes include recommended starting dilutions; optimal dilutions/concentrations should be determined by the end user.	
Applications	Functional Studies SDS-PAGE
Mass spectrometry	MALDI-TOF
Form	Liquid

Preparation and Storage	
Stability and Storage	Shipped at 4°C. Upon delivery aliquot and store at -20°C or -80°C. Avoid repeated freeze / thaw

cycles.

pH: 8.00

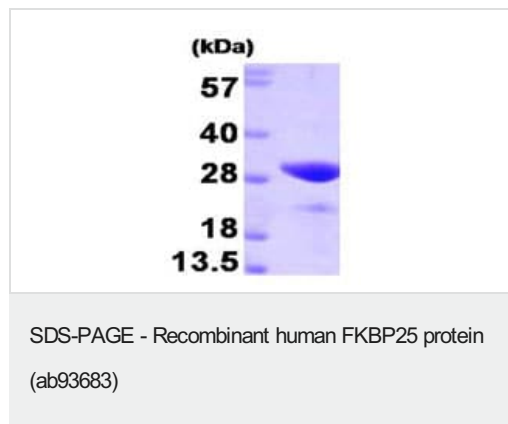
Constituents: 0.0154% DTT, 0.316% Tris HCl, 10% Glycerol (glycerin, glycerine)

This product is an active protein and may elicit a biological response in vivo, handle with caution.

## General Info

<b>Function</b>	FK506- and rapamycin-binding proteins (FKBPs) constitute a family of receptors for the two immunosuppressants which inhibit T-cell proliferation by arresting two distinct cytoplasmic signal transmission pathways. PPlases accelerate the folding of proteins.
<b>Sequence similarities</b>	Belongs to the FKBP-type PPlase family. Contains 1 PPlase FKBP-type domain.
<b>Cellular localization</b>	Nucleus.

## Images



15% SDS-PAGE showing ab93683 at approximately 25 kDa (3 µg).

**Please note:** All products are "FOR RESEARCH USE ONLY. NOT FOR USE IN DIAGNOSTIC PROCEDURES"

## Our Abpromise to you: Quality guaranteed and expert technical support

- Replacement or refund for products not performing as stated on the datasheet
- Valid for 12 months from date of delivery
- Response to your inquiry within 24 hours
- We provide support in Chinese, English, French, German, Japanese and Spanish
- Extensive multi-media technical resources to help you
- We investigate all quality concerns to ensure our products perform to the highest standards

If the product does not perform as described on this datasheet, we will offer a refund or replacement. For full details of the Abpromise, please visit <https://www.abcam.com/abpromise> or contact our technical team.

## Terms and conditions

- Guarantee only valid for products bought direct from Abcam or one of our authorized distributors