

Recombinant human FKBP6 protein ab95497

1 Image

Description

Product name	Recombinant human FKBP6 protein
Biological activity	Specific activity is > 190 nmoles/min/mg, and is defined as the amount of enzyme that cleaves 1 μ mole of suc-AAPF-pNA per minute at 25°C in Tris-Hcl pH8.0 using chymotrypsin.
Activity Assay	<p>Prepare 170 μl assay buffer into a suitable container and pre-chill on ice before use: The final concentrations are 200 mM Tris-Hcl, pH 8.0, and 20nM chymotrypsin.</p> <p>Add 10 μl of recombinant FKBP6 protein with 1 μg in assay buffer.</p> <p>Mix by inversion and equilibrate to 1°C and monitor the A405nm until the value is constant using a spectrophotometer.</p> <p>Add 20 μl pre-chilled 5mM suc-AAFP-pNA. (Substrate was dissolved in TFE that contained 460mM LiCl to a concentration of 3 mM)</p> <p>Record the increase in A405 nm for 30 minutes at 25°C.</p>
Purity	<p>> 95 % SDS-PAGE.</p> <p>ab95497 is purified using conventional chromatography techniques.</p>
Expression system	Escherichia coli
Accession	<u>O75344</u>
Protein length	Full length protein
Animal free	No
Nature	Recombinant
Species	Human
Sequence	<p>MGSSHHHHHHSSGLVPRGSHMGGSALNQGVLGGDDAP</p> <p>GQSLYERLSQRML</p> <p>DISGDRGVLKDVIREGAGDLVAPDASVLVKYSGYLEHMDR</p> <p>PFDSNYFRKT</p> <p>PRLMKLGEDITLWGMEGLLSMRRGELARFLKPNYAYGT</p> <p>LGCPLIPP</p> <p>TTVLFEIELLDFLDCAESDKFCALSAEQDQFPLQKVLKV</p> <p>AATEREFGNY</p> <p>LFRQNRFYDAKVRYKRALLLRRRSAPPEEQHLVEAAKLP</p> <p>VLLNLSFTYL</p> <p>KLDRPTIALCYGEQALIIDQKNAKALFRCGQACLLLTEYQK</p> <p>ARDFLVRAQ</p> <p>KEQPFNHDINNELKKLASCYRDYVDKEKEMWHRMFAPC</p>

Predicted molecular weight	39 kDa including tags
Tags	His tag N-Terminus

Specifications

Our **Abpromise guarantee** covers the use of **ab95497** in the following tested applications.

The application notes include recommended starting dilutions; optimal dilutions/concentrations should be determined by the end user.

Applications	SDS-PAGE
	Mass Spectrometry
	Functional Studies
Mass spectrometry	MALDI-TOF
Form	Liquid

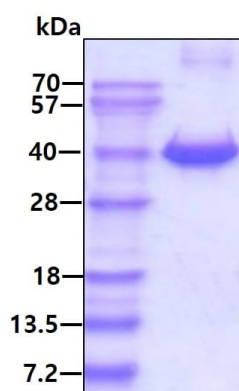
Preparation and Storage

Stability and Storage	Shipped at 4°C. Upon delivery aliquot and store at -20°C or -80°C. Avoid repeated freeze / thaw cycles.
	pH: 8.00
	Constituents: 0.0154% (R*,R*)-1,4-Dimercaptobutan-2,3-diol, 0.316% Tris HCl, 0.0292% EDTA, 40% Glycerol (glycerin, glycerine), 1.1688% Sodium chloride
	This product is an active protein and may elicit a biological response in vivo, handle with caution.

General Info

Function	PPases accelerate the folding of proteins.
Tissue specificity	Detected in all tissues examined, with higher expression in testis, heart, skeletal muscle, liver, and kidney.
Involvement in disease	Note=FKBP6 is located in the Williams-Beuren syndrome (WBS) critical region. WBS results from a hemizygous deletion of several genes on chromosome 7q11.23, thought to arise as a consequence of unequal crossing over between highly homologous low-copy repeat sequences flanking the deleted region. Haploinsufficiency of FKBP6 may be the cause of certain cardiovascular and musculo-skeletal abnormalities observed in the disease.
Sequence similarities	Contains 1 PPase FKBP-type domain. Contains 3 TPR repeats.

Images



15% SDS-PAGE showing ab95497 at approximately 39.3kDa (3µg) under reducing condition and visualized by coomassie blue stain.

SDS-PAGE - Recombinant human FKBP6 protein
(ab95497)

Please note: All products are "FOR RESEARCH USE ONLY. NOT FOR USE IN DIAGNOSTIC PROCEDURES"

Our Abpromise to you: Quality guaranteed and expert technical support

- Replacement or refund for products not performing as stated on the datasheet
- Valid for 12 months from date of delivery
- Response to your inquiry within 24 hours
- We provide support in Chinese, English, French, German, Japanese and Spanish
- Extensive multi-media technical resources to help you
- We investigate all quality concerns to ensure our products perform to the highest standards

If the product does not perform as described on this datasheet, we will offer a refund or replacement. For full details of the Abpromise, please visit <https://www.abcam.com/abpromise> or contact our technical team.

Terms and conditions

- Guarantee only valid for products bought direct from Abcam or one of our authorized distributors