

## Product datasheet

# Recombinant Human FOXM1 protein ab158447

1 Image

### Description

---

<b>Product name</b>	Recombinant Human FOXM1 protein
<b>Expression system</b>	Wheat germ
<b>Protein length</b>	Protein fragment
<b>Animal free</b>	No
<b>Nature</b>	Recombinant
<b>Species</b>	Human
<b>Sequence</b>	LQSAPPLESPQRLLSSEPLDLISVPPFGNSSPSDIDVPKPG SPEPQVSGLA ANRSLTEGLVLDTMNDSLKILLDISFPGLDEDPLGPDNIN WSQFIPELQ
<b>Amino acids</b>	702 to 801
<b>Tags</b>	GST tag N-Terminus

### Specifications

---

Our **Abpromise guarantee** covers the use of **ab158447** in the following tested applications.

The application notes include recommended starting dilutions; optimal dilutions/concentrations should be determined by the end user.

<b>Applications</b>	ELISA Western blot
<b>Form</b>	Liquid

### Additional notes

### Preparation and Storage

---

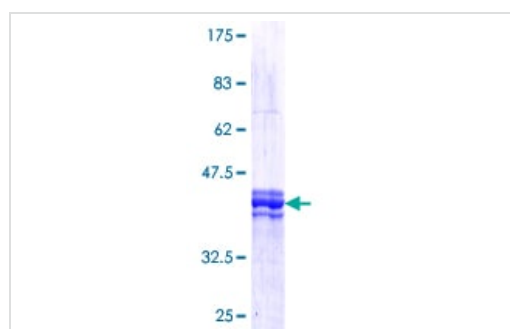
<b>Stability and Storage</b>	Shipped on dry ice. Upon delivery aliquot and store at -80°C. Avoid freeze / thaw cycles. pH: 8.00 Constituents: 0.31% Glutathione, 0.79% Tris HCl
------------------------------	--

### General Info

## General info

<b>Function</b>	Transcriptional activatory factor. May play a role in the control of cell proliferation.
<b>Tissue specificity</b>	Expressed in thymus, testis, small intestine, colon followed by ovary. Appears to be expressed only in adult organs containing proliferating/cycling cells or in response to growth factors. Also expressed in epithelial cell lines derived from tumors. Not expressed in resting cells. Isoform 2 is highly expressed in testis.
<b>Sequence similarities</b>	Contains 1 fork-head DNA-binding domain.
<b>Developmental stage</b>	Embryonic expression pattern: liver, lung, intestine, kidney, urinary tract; adult expression pattern: intestine, colon, testis and thymus.
<b>Domain</b>	Within the protein there is a domain which acts as a transcriptional activator. Insertion of a splicing sequence within it inactivates this transcriptional activity, as it is the case for isoform 4.
<b>Post-translational modifications</b>	Phosphorylated in M (mitotic) phase.
<b>Cellular localization</b>	Nucleus.

## Images



SDS-PAGE - Recombinant Human FOXM1 protein (ab158447)

ab158447 on a 12.5% SDS-PAGE stained with Coomassie Blue.

**Please note:** All products are "FOR RESEARCH USE ONLY. NOT FOR USE IN DIAGNOSTIC PROCEDURES"

## Our Abpromise to you: Quality guaranteed and expert technical support

- Replacement or refund for products not performing as stated on the datasheet
- Valid for 12 months from date of delivery
- Response to your inquiry within 24 hours
- We provide support in Chinese, English, French, German, Japanese and Spanish
- Extensive multi-media technical resources to help you
- We investigate all quality concerns to ensure our products perform to the highest standards

If the product does not perform as described on this datasheet, we will offer a refund or replacement. For full details of the Abpromise, please visit <https://www.abcam.com/abpromise> or contact our technical team.

## Terms and conditions

---

- Guarantee only valid for products bought direct from Abcam or one of our authorized distributors