

Recombinant Human Frizzled homolog 1 protein (Fc Chimera) ab198659

1 Image

Description

Product name	Recombinant Human Frizzled homolog 1 protein (Fc Chimera)		
Purity	> 90 % SDS-PAGE.		
Expression system	HEK 293 cells		
Accession	<u>Q9UP38</u>		
Protein length	Protein fragment		
Animal free	No		
Nature	Recombinant		
Species	Human		
Sequence	QAAGQGPGQGPGPGQQPPPPQQQQSGQQYNGERGIS VPDHGYCQPISIP LCTDIAYNQTIMPNLLGHTNQEDAGLEVHQFYPLVKVQCS AELKFFLCSM YAPVCTVLEQALPPCRSLCERARQGCEALMNKFGFQWP DTLKCEKFPVHG AGELCVGQNTSDKGTPTPSLLPEFWTSNPQHIEGRMDPK SCDKTHTCPPC PAPELLGGPSVFLFPPKPKDTLMISRTPEVTCVVVDVSHE DPEVKFNWYV DGVEVHNAKTKPREEQYNSTYRVVSVLTVLHQDWLNGKE YKCKVSNKALP APIEKTISKAKGQPREPQVYTLPPSRDELTKNQVSLTCLVK GFYPSDIAV EWESNGQPENNYKTTTPVLDSGDSFFLYSKLTVDKSRW QQGNVFSCSVMH EALHNHYTQKSLSLSPGK		
Predicted molecular weight	46 kDa including tags		
Amino acids	73 to 253		
Additional sequence information	Recombinant fragment of Human Frizzled homolog 1, amino acids 73-253, fused at C terminal with Fc portion of Human IgG1 (amino acids 100-330).		

Specifications

Our **Abpromise guarantee** covers the use of **ab198659** in the following tested applications.

The application notes include recommended starting dilutions; optimal dilutions/concentrations should be determined by the end user.

Applications	SDS-PAGE
Form	Liquid
Additional notes	Useful for the study of enzyme kinetics, screening inhibitors, and selectivity profiling.

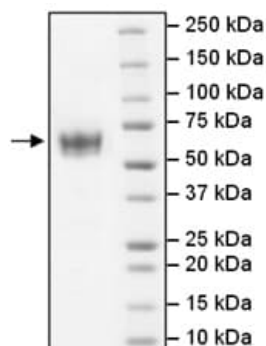
Preparation and Storage

Stability and Storage	Shipped on Dry Ice. Store at -80°C. Avoid freeze / thaw cycle. pH: 8.00 Constituents: 0.48% Tris, 0.64% Sodium chloride, 0.02% Potassium chloride, 20% Glycerol (glycerin, glycerine) Sterile-filtered (0.2 µm) solution
------------------------------	-------------------------------------------------------------------------------------------------------------------------------------------------------------------------------------------------------------------------------------------

General Info

Function	Receptor for Wnt proteins. Most of frizzled receptors are coupled to the beta-catenin canonical signaling pathway, which leads to the activation of disheveled proteins, inhibition of GSK-3 kinase, nuclear accumulation of beta-catenin and activation of Wnt target genes. A second signaling pathway involving PKC and calcium fluxes has been seen for some family members, but it is not yet clear if it represents a distinct pathway or if it can be integrated in the canonical pathway, as PKC seems to be required for Wnt-mediated inactivation of GSK-3 kinase. Both pathways seem to involve interactions with G-proteins. May be involved in transduction and intercellular transmission of polarity information during tissue morphogenesis and/or in differentiated tissues. Activated by Wnt3A, Wnt3, Wnt1 and to a lesser extent Wnt2, but not by Wnt4, Wnt5A, Wnt5B, Wnt6, Wnt7A or Wnt7B.
Tissue specificity	Expressed in adult heart, placenta, lung, kidney, pancreas, prostate, and ovary and in fetal lung and kidney.
Sequence similarities	Belongs to the G-protein coupled receptor Fz/Smo family. Contains 1 FZ (frizzled) domain.
Domain	Lys-Thr-X-X-X-Trp motif interacts with the PDZ domain of Dvl (Disheveled) family members and is involved in the activation of the Wnt/beta-catenin signaling pathway. The FZ domain is involved in binding with Wnt ligands.
Cellular localization	Membrane. Cell membrane.

Images



SDS-PAGE - Recombinant Human Frizzled homolog
1 protein (Fc Chimera) (ab198659)

4-20% SDS-PAGE analysis of ab198659 (2 µg) with Coomassie staining.

Note: This protein runs at a higher apparent M.W. by SDS-PAGE due to glycosylation.

Please note: All products are "FOR RESEARCH USE ONLY. NOT FOR USE IN DIAGNOSTIC PROCEDURES"

Our Abpromise to you: Quality guaranteed and expert technical support

- Replacement or refund for products not performing as stated on the datasheet
- Valid for 12 months from date of delivery
- Response to your inquiry within 24 hours
- We provide support in Chinese, English, French, German, Japanese and Spanish
- Extensive multi-media technical resources to help you
- We investigate all quality concerns to ensure our products perform to the highest standards

If the product does not perform as described on this datasheet, we will offer a refund or replacement. For full details of the Abpromise, please visit <https://www.abcam.com/abpromise> or contact our technical team.

Terms and conditions

- Guarantee only valid for products bought direct from Abcam or one of our authorized distributors