

Product datasheet

Recombinant human G-CSF protein ab167700

[2 Images](#)

Description

Product name	Recombinant human G-CSF protein
Biological activity	The bio-activity was determined by dose-dependent stimulation of the proliferation of M-NFS-60 cells. ED ₅₀ <0.05ng/ml, corresponding to a specific activity of >2X10 ⁷ Unit/mg.
Purity	> 95 % SDS-PAGE. Purified by ion exchange chromatography.
Endotoxin level	< 1.000 Eu/μg
Expression system	HEK 293 cells
Accession	<u>NP_757373.1</u>
Protein length	Protein fragment
Animal free	No
Nature	Recombinant
Species	Human
Sequence	TPLGPASSLPQSFLKCLEQVRKIQGDGAALQEKLCA ^{TYK} LCHPEELVLL GHSLGIPWAPLSSCPSQALQLAGCLS ^{QLH} SGLFLYQGLLQ ALEGISPELG PTLDTLQLDVADFATTWQQMEELGMAPALQPTQGAMPA FASAFQRRAGG VLVASHLQSFLEVS ^{YR} VLRHLAQP
Predicted molecular weight	19 kDa
Amino acids	31 to 204

Specifications

Our **Abpromise guarantee** covers the use of **ab167700** in the following tested applications.

The application notes include recommended starting dilutions; optimal dilutions/concentrations should be determined by the end user.

Applications	Functional Studies SDS-PAGE
Form	Lyophilized

Preparation and Storage

Stability and Storage

Shipped at 4°C. Store at +4°C short term (1-2 weeks). Upon delivery aliquot. Store at -20°C or -80°C. Avoid freeze / thaw cycle.

pH: 7.40

Constituents: 90% PBS, 10% Trehalose

Lyophilized from 0.22 µm filtered solution.

5-10% trehalose is commonly used for freeze drying, and after reconstitution, the trehalose is mostly about 3-5%

This product is an active protein and may elicit a biological response in vivo, handle with caution.

Reconstitution

Reconstitute the lyophilized protein in sterile deionized water to a final concentration of 200 µg/ml. Solubilize for 30 to 60 minutes at room temperature with occasional gentle mixing. Carrier protein (0.1% HSA or BSA) is strongly recommended for further dilution and long term storage.

General Info

Function

Granulocyte/macrophage colony-stimulating factors are cytokines that act in hematopoiesis by controlling the production, differentiation, and function of 2 related white cell populations of the blood, the granulocytes and the monocytes-macrophages. This CSF induces granulocytes.

Sequence similarities

Belongs to the IL-6 superfamily.

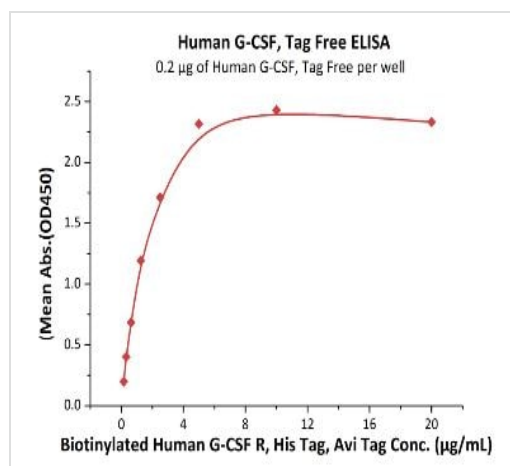
Post-translational modifications

O-glycan consists of Gal-GalNAc disaccharide which can be modified with up to two sialic acid residues (done in recombinantly expressed G-CSF from CHO cells).

Cellular localization

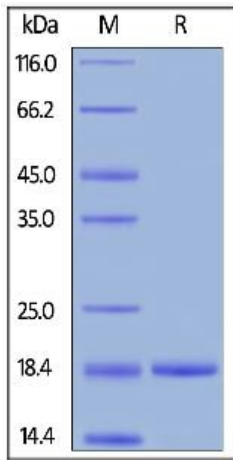
Secreted.

Images



Ab167700 at 2 µg/mL (100 µL/well) can bind Biotinylated Human G-CSF R, His Tag, Avi Tag ([ab246045](#)) with a linear range of 0.156-1.25 µg/mL.

Functional Studies - Recombinant human G-CSF protein (ab167700)



SDS PAGE analysis of ab167700 under reducing conditions.
Stained overnight with Coomassie Blue.

SDS-PAGE - Recombinant human G-CSF protein
(ab167700)

Please note: All products are "FOR RESEARCH USE ONLY. NOT FOR USE IN DIAGNOSTIC PROCEDURES"

Our Abpromise to you: Quality guaranteed and expert technical support

- Replacement or refund for products not performing as stated on the datasheet
- Valid for 12 months from date of delivery
- Response to your inquiry within 24 hours
- We provide support in Chinese, English, French, German, Japanese and Spanish
- Extensive multi-media technical resources to help you
- We investigate all quality concerns to ensure our products perform to the highest standards

If the product does not perform as described on this datasheet, we will offer a refund or replacement. For full details of the Abpromise, please visit <https://www.abcam.com/abpromise> or contact our technical team.

Terms and conditions

- Guarantee only valid for products bought direct from Abcam or one of our authorized distributors