

Product datasheet

Recombinant human G-CSF protein ab51298

2 Images

Description

| | |
|--------------------------|--|
| Product name | Recombinant human G-CSF protein |
| Purity | > 95 % SDS-PAGE. ab51298 was purified by FPLC gel-filtration chromatography, after refolding of the isolated inclusion bodies in a renaturation buffer. |
| Expression system | Escherichia coli |
| Protein length | Full length protein |
| Animal free | No |
| Nature | Recombinant |
| Species | Human |
| Sequence | MTPLGPASSL PQSFLKCLE QVRKIQGDGA ALQEKLCATY KLCHPEELVL LGHSLGIPWA PLSSCPSQAL QLAGCLSQLH SGLFLYQGLL QALEGISPEL GPTLDTLQLD VADFATTIWQ QMEELGMAPA LQPTQGAMPA FASAFQRRAG GVLVASHLQS FLEVSRYRLR HLAQP |

Specifications

Our **Abpromise guarantee** covers the use of **ab51298** in the following tested applications.

The application notes include recommended starting dilutions; optimal dilutions/concentrations should be determined by the end user.

| | |
|---------------------|--------------------------------|
| Applications | SDS-PAGE Functional Studies |
| Form | Liquid |

Preparation and Storage

| | |
|------------------------------|--|
| Stability and Storage | Shipped at 4°C. Upon delivery aliquot and store at -20°C. Avoid freeze / thaw cycles. pH: 7.40 Constituents: PBS, 10% Glycerol (glycerin, glycerine) This product is an active protein and may elicit a biological response in vivo, handle with caution. |
|------------------------------|--|

General Info

Function

Granulocyte/macrophage colony-stimulating factors are cytokines that act in hematopoiesis by controlling the production, differentiation, and function of 2 related white cell populations of the blood, the granulocytes and the monocytes-macrophages. This CSF induces granulocytes.

Sequence similarities

Belongs to the IL-6 superfamily.

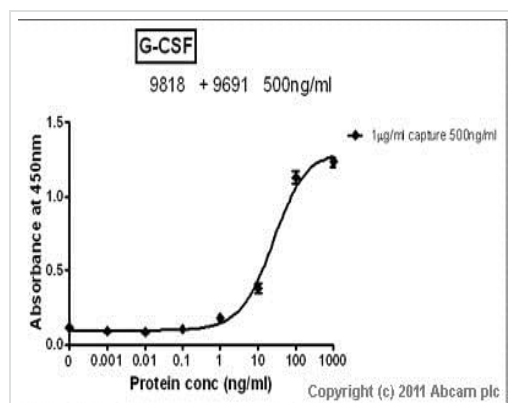
Post-translational modifications

O-glycan consists of Gal-GalNAc disaccharide which can be modified with up to two sialic acid residues (done in recombinantly expressed G-CSF from CHO cells).

Cellular localization

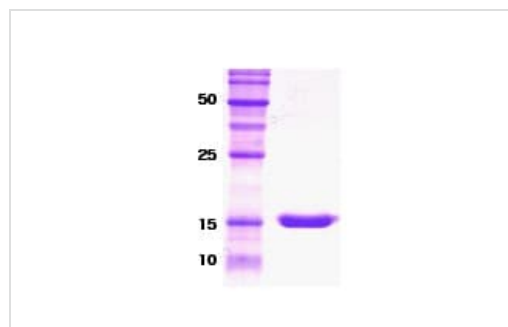
Secreted.

Images



Standard curve for G-CSF (Analyte: ab51298); dilution range 1pg/ml to 1µg/ml using Capture Antibody [ab9818](#) at 1µg/ml and Detector Antibody [ab9691](#) at 0.5µg/ml.

Sandwich ELISA - Recombinant human G-CSF protein (ab51298)



14% SDS-PAGE analysis of ab51298, recombinant human G-CSF.

SDS-PAGE - Recombinant human G-CSF protein (ab51298)

Please note: All products are "FOR RESEARCH USE ONLY. NOT FOR USE IN DIAGNOSTIC PROCEDURES"

Our Abpromise to you: Quality guaranteed and expert technical support

- Replacement or refund for products not performing as stated on the datasheet
- Valid for 12 months from date of delivery
- Response to your inquiry within 24 hours

- We provide support in Chinese, English, French, German, Japanese and Spanish
- Extensive multi-media technical resources to help you
- We investigate all quality concerns to ensure our products perform to the highest standards

If the product does not perform as described on this datasheet, we will offer a refund or replacement. For full details of the Abpromise, please visit <https://www.abcam.com/abpromise> or contact our technical team.

Terms and conditions

- Guarantee only valid for products bought direct from Abcam or one of our authorized distributors