

Product datasheet

Recombinant Human GABARAPL2/GATE-16 protein ab103055

[1 Image](#)

Description

Product name	Recombinant Human GABARAPL2/GATE-16 protein
Purity	> 90 % SDS-PAGE. ab103055 was purified using conventional chromatography techniques.
Expression system	Escherichia coli
Accession	<u>P60520</u>
Protein length	Full length protein
Animal free	No
Nature	Recombinant
Species	Human
Sequence	MGSSHHHHHHSSGLVPRGSHMKWMFKEDHSLEHRCV ESAKIRAKYPDRVP VIVEKVSGSQVDDIDKRKYLVPSDITVAQFMWIIIRKRIQLPSE KAIFLFV DKTVPQSSSLTMGQLYEKEKDEDEGFLYVAYSGENTFGF
Predicted molecular weight	16 kDa including tags
Amino acids	1 to 117
Tags	His tag N-Terminus

Specifications

Our **Abpromise guarantee** covers the use of **ab103055** in the following tested applications.

The application notes include recommended starting dilutions; optimal dilutions/concentrations should be determined by the end user.

Applications	SDS-PAGE Mass Spectrometry
Mass spectrometry	MALDI-TOF
Form	Liquid
Additional notes	Previously labelled as GABARAPL2.

Preparation and Storage

Stability and Storage

Shipped at 4°C. Store at +4°C short term (1-2 weeks). Upon delivery aliquot. Store at -20°C or -80°C. Avoid freeze / thaw cycle.

pH: 8.00

Constituents: 0.077% DTT, 0.316% Tris HCl, 20% Glycerol (glycerin, glycerine), 1.16% Sodium chloride

General Info

Function

Involved in intra-Golgi traffic. Modulates intra-Golgi transport through coupling between NSF activity and SNAREs activation. It first stimulates the ATPase activity of NSF which in turn stimulates the association with GOSR1.

Tissue specificity

Ubiquitous. Expressed at high levels in the brain, heart, prostate, ovary, spleen and skeletal muscle. Expressed at very low levels in lung, thymus and small intestine.

Sequence similarities

Belongs to the MAP1 LC3 family.

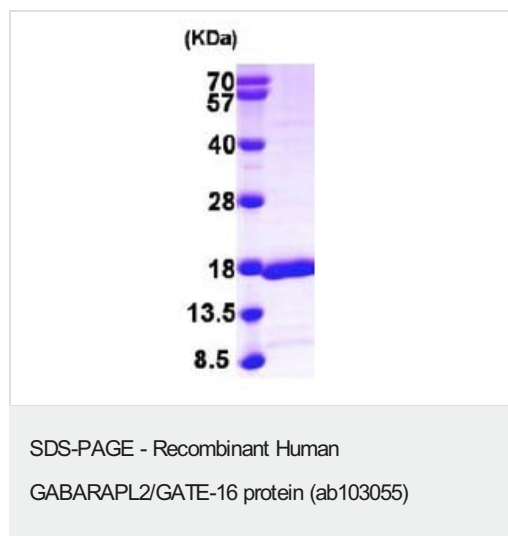
Post-translational modifications

Phosphorylated upon DNA damage, probably by ATM or ATR.

Cellular localization

Golgi apparatus.

Images



15% SDS-PAGE (3 µg)

Please note: All products are "FOR RESEARCH USE ONLY. NOT FOR USE IN DIAGNOSTIC PROCEDURES"

Our Abpromise to you: Quality guaranteed and expert technical support

- Replacement or refund for products not performing as stated on the datasheet
- Valid for 12 months from date of delivery
- Response to your inquiry within 24 hours
- We provide support in Chinese, English, French, German, Japanese and Spanish

- Extensive multi-media technical resources to help you
- We investigate all quality concerns to ensure our products perform to the highest standards

If the product does not perform as described on this datasheet, we will offer a refund or replacement. For full details of the Abpromise, please visit <https://www.abcam.com/abpromise> or contact our technical team.

Terms and conditions

- Guarantee only valid for products bought direct from Abcam or one of our authorized distributors