

Product datasheet

Recombinant human Galectin 3 protein (Active) ab89487

[3 References](#) [1 Image](#)

Description

Product name	Recombinant human Galectin 3 protein (Active)
Biological activity	The ED₅₀ for this effect is ≤ 15 ug/ml. Measured by its ability to agglutinate human red blood cells.
Purity	> 95 % SDS-PAGE. Purified by using conventional chromatography techniques
Expression system	Escherichia coli
Accession	<u>P17931</u>
Protein length	Full length protein
Animal free	No
Nature	Recombinant
Species	Human
Sequence	MADNFSLHDA LSGSGNPNPQ GWPGAWGNQP AGAGGYPGAS YPGAYPGQAP PGAYPGQAPP GAYPGAPGAY PGAPAPGVYP GPPSGPGAYP SSGQPSATGA YPATGPYGAP AGPLMPYNL PLPGGVVPRM LITLGTVKP NANRIALDFQ RGNDVAFHFN PRFNENNRRV MCNTKLDNN WGREERQSVF PFESGKPFKI QVLVEPDHFK VAVNDAHLLQ YNHRVKKLNE ISKLGISGDI DLTSASYTMI
Predicted molecular weight	28 kDa including tags
Amino acids	1 to 250
Tags	His tag N-Terminus
Additional sequence information	(NCBI NP_002297) MW confirmed by MALDI-TOF.

Specifications

Our **Abpromise guarantee** covers the use of **ab89487** in the following tested applications.

The application notes include recommended starting dilutions; optimal dilutions/concentrations should be determined by the end user.

Applications Functional Studies

SDS-PAGE

Form Liquid

Preparation and Storage

Stability and Storage Shipped at 4°C. Store at +4°C short term (1-2 weeks). Upon delivery aliquot. Store at -20°C or -80°C. Avoid freeze / thaw cycle.

pH: 8.00

Constituents: 0.0154% DTT, 0.316% Tris HCl, 10% Glycerol, 0.58% Sodium chloride

This product is an active protein and may elicit a biological response in vivo, handle with caution.

General Info

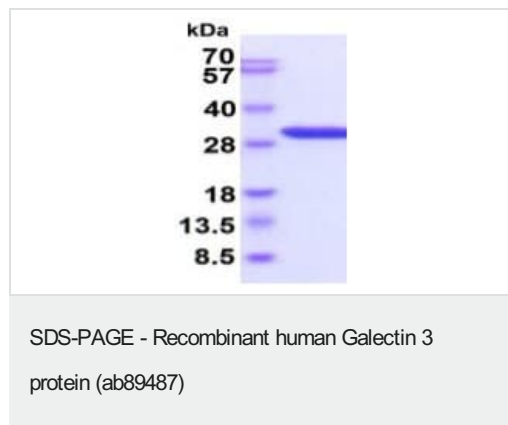
Function Galactose-specific lectin which binds IgE. May mediate with the alpha-3, beta-1 integrin the stimulation by CSPG4 of endothelial cells migration. Together with DMBT1, required for terminal differentiation of columnar epithelial cells during early embryogenesis.

Tissue specificity A major expression is found in the colonic epithelium. It is also abundant in the activated macrophages.

Sequence similarities Contains 1 galectin domain.

Cellular localization Nucleus. Cytoplasmic in adenomas and carcinomas. May be secreted by a non-classical secretory pathway and associate with the cell surface.

Images



3ug of reduced ab89487 on SDS-PAGE, stained by Coomassie Blue.

Please note: All products are "FOR RESEARCH USE ONLY. NOT FOR USE IN DIAGNOSTIC PROCEDURES"

Our Abpromise to you: Quality guaranteed and expert technical support

- Replacement or refund for products not performing as stated on the datasheet
- Valid for 12 months from date of delivery
- Response to your inquiry within 24 hours

- We provide support in Chinese, English, French, German, Japanese and Spanish
- Extensive multi-media technical resources to help you
- We investigate all quality concerns to ensure our products perform to the highest standards

If the product does not perform as described on this datasheet, we will offer a refund or replacement. For full details of the Abpromise, please visit <https://www.abcam.com/abpromise> or contact our technical team.

Terms and conditions

- Guarantee only valid for products bought direct from Abcam or one of our authorized distributors