

Recombinant Human GALK1 protein ab172152

1 Image

Description

Product name	Recombinant Human GALK1 protein		
Purity	> 95 % SDS-PAGE.		
Endotoxin level	< 0.100 Eu/µg		
Expression system	Escherichia coli		
Accession	<b><u>P51570</u></b>		
Protein length	Full length protein		
Animal free	No		
Nature	Recombinant		
Species	Human		
Sequence	MAALRQPQVAELLAEARRAFREEFGAEPELAVSAPGRVN LIGEHTDYNQG LVLPMALELMTVLVGSPRKDGLVSLTTSEGADEPQRLQ FPLPTAQRSLE PGTPRWANYVKGVIQYYAAPLPGFSAVVVSSVPLGGGL SSSASLEVATY TFLQQQLCPDSGTIAARAQVCQQAHSFAGMPCGIMDQFIS LMGQKGHALL IDCRSLETSLVPLSDPKLAVLITNSNVRHSLASSEYPVRRR QCEEVARAL GKESLREVQLEEELEAARDLVSKEGFRRARHVVGIEIRRTA QAAAALRRGDY RAFGRLMVESHRSRLRDDYEVSCPELDQLVEAALAVPGVY GSRMTGGGFGG CTVTLLEASAAPHAMRHIQEHYGGTATFYLSQAADGAKVL CL		
Predicted molecular weight	42 kDa		
Amino acids	1 to 392		
Tags	His tag C-Terminus		

Specifications

Our **Abpromise guarantee** covers the use of **ab172152** in the following tested applications.

The application notes include recommended starting dilutions; optimal dilutions/concentrations should be determined by the end user.

<b>Applications</b>	SDS-PAGE
	HPLC
<b>Form</b>	Liquid

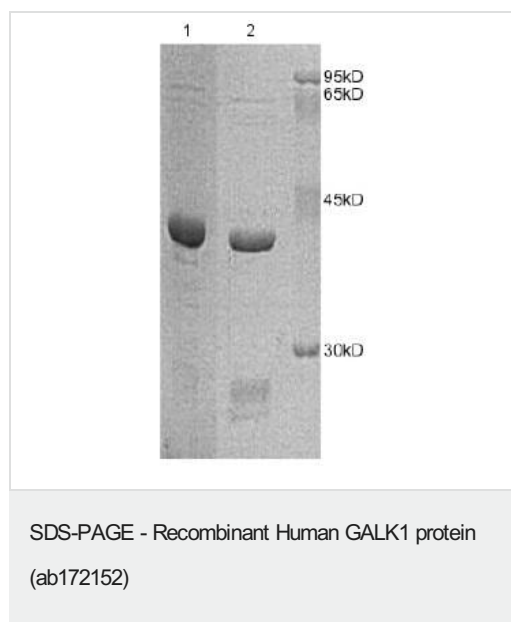
## Preparation and Storage

<b>Stability and Storage</b>	Shipped on Dry Ice. Upon delivery aliquot. Store at -20°C or -80°C. Avoid freeze / thaw cycle.
	pH: 8.00
	Constituents: 0.88% Sodium chloride, 0.32% Tris HCl
	Supplied as a 0.2 µM filtered solution.

## General Info

<b>Function</b>	Major enzyme for galactose metabolism.
<b>Pathway</b>	Carbohydrate metabolism; galactose metabolism.
<b>Involvement in disease</b>	Defects in GALK1 are the cause of galactosemia II (GALCT2) [MIM:230200]. Galactosemia II is an autosomal recessive deficiency characterized by congenital cataracts during infancy and presenile cataracts in the adult population. The cataracts are secondary to accumulation of galactitol in the lenses.
<b>Sequence similarities</b>	Belongs to the GHMP kinase family. Galk subfamily.

## Images



SDS-PAGE analysis of ab172152 in 1) Non reducing or 2) Reducing conditions.

**Please note:** All products are "FOR RESEARCH USE ONLY. NOT FOR USE IN DIAGNOSTIC PROCEDURES"

### **Our Abpromise to you: Quality guaranteed and expert technical support**

---

- Replacement or refund for products not performing as stated on the datasheet
- Valid for 12 months from date of delivery
- Response to your inquiry within 24 hours
  
- We provide support in Chinese, English, French, German, Japanese and Spanish
- Extensive multi-media technical resources to help you
- We investigate all quality concerns to ensure our products perform to the highest standards

If the product does not perform as described on this datasheet, we will offer a refund or replacement. For full details of the Abpromise, please visit <https://www.abcam.com/abpromise> or contact our technical team.

### **Terms and conditions**

---

- Guarantee only valid for products bought direct from Abcam or one of our authorized distributors