

Product datasheet

Recombinant Human gamma Tubulin protein (denatured) ab115710

1 References 1 Image

Description	
Product name	Recombinant Human gamma Tubulin protein (denatured)
Purity	> 85 % SDS-PAGE.
Expression system	Escherichia coli
Accession	<u>P23258</u>
Protein length	Full length protein
Animal free	No
Nature	Recombinant
Species	Human
Sequence	MGSSHHHHHHSSGLVPRGSHMPREITLQLGQCNGNQIGFE FWKQLCAEHG ISPEGVEEFATEGTDRKDVFFYQADDEHYIPRAVLLDLEP RVIHSILNS PYAKLYNPENYLSEHGGGAGNNWASGFSQGEKIHEDIFDII DREADGSD SLEGFVLCHSIAGGTGSGLGSYLLERLNDRYPKKLVQTYS VFPNQDEMSD VVVQPYNSLLTLKRLTQNADCVVVLDNTALNRIATDRLHIQ NPSFSQINQ LVSTIMSASTTTLRYPGYMNNDLIGLIASLIPTPRLHFLMTGY TPLTTDQ SVASVRKTTVLDMRRLQPKNVMVSTGRDRQTNHCYAI LNIQGEVDP TQVHKSLQRIRERKLANFIPWGPASIQVALSRKSPYLPSAH RVSGLMMAN HTSISSLFERTCRQYDKLRKREAFLEQFRKEDMFKDNFDE MDTSREIVQQ LIDEYHAATRPDYISWGTQEQ
Predicted molecular weight	53 kDa including tags
Amino acids	1 to 451
Tags	His tag N-Terminus
Description	Recombinant Human gamma Tubulin protein

Specifications

Our **Abpromise guarantee** covers the use of **ab115710** in the following tested applications.

The application notes include recommended starting dilutions; optimal dilutions/concentrations should be determined by the end user.

Applications SDS-PAGE

Form Liquid

Preparation and Storage

Stability and Storage Shipped at 4°C. Upon delivery aliquot and store at -20°C or -80°C. Avoid repeated freeze / thaw cycles.

pH: 8.00

Constituents: 6% Urea, 0.32% Tris HCl, 5% Glycerol (glycerin, glycerine)

General Info

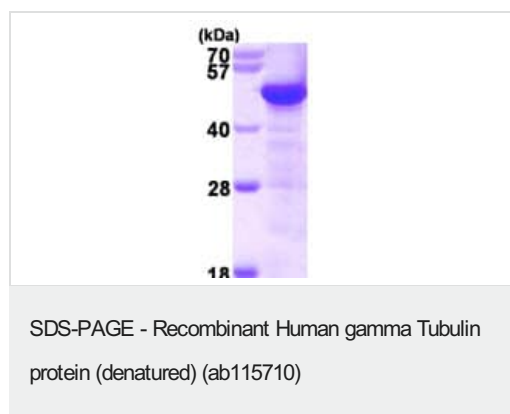
Function Tubulin is the major constituent of microtubules. Gamma tubulin is found at microtubule organizing centers (MTOC) such as the spindle poles or the centrosome. Pericentriolar matrix component that regulates alpha/beta tubulin minus-end nucleation, centrosome duplication and spindle formation.

Sequence similarities Belongs to the tubulin family.

Post-translational modifications Phosphorylation at Ser-131 by BRSK1 regulates centrosome duplication, possibly by mediating relocation of gamma-tubulin and its associated proteins from the cytoplasm to the centrosome.

Cellular localization Cytoplasm > cytoskeleton > centrosome.

Images



15% SDS-PAGE showing ab115710 at approximately 53.3kDa (3µg).

Please note: All products are "FOR RESEARCH USE ONLY. NOT FOR USE IN DIAGNOSTIC PROCEDURES"

Our Abpromise to you: Quality guaranteed and expert technical support

- Replacement or refund for products not performing as stated on the datasheet
- Valid for 12 months from date of delivery

- Response to your inquiry within 24 hours
- We provide support in Chinese, English, French, German, Japanese and Spanish
- Extensive multi-media technical resources to help you
- We investigate all quality concerns to ensure our products perform to the highest standards

If the product does not perform as described on this datasheet, we will offer a refund or replacement. For full details of the Abpromise, please visit <https://www.abcam.com/abpromise> or contact our technical team.

Terms and conditions

- Guarantee only valid for products bought direct from Abcam or one of our authorized distributors