

Recombinant Human GAS 6 protein ab131810

1 Image

Description

Product name	Recombinant Human GAS 6 protein
Expression system	Wheat germ
Accession	<u>Q14393-2</u>
Protein length	Full length protein
Animal free	No
Nature	Recombinant
Species	Human
Sequence	MAPSLSPGPAALRRAPQLLLLLLAAECALAALLPAREATQ FLRPRQRRAF QVFEEAKQGHLERECVEELCSREEAREVFENDPETDYFY PRYLCINKYG SPYTKNSGFATCVQNLPDQCTPNPCDRKGTQACQDLMG NFFCLCKAGWGG RLCDKDVNECSQENGGCLQICHNKPGSFHCSCHS GFEL SSDGRTCQDIDE CADSEACGEARCKNLPGSYSCLCDEGFAYSSQEKACRD VDECLQGRCEQV CVNSPGSYTCHCDGRGGLKLSQDMDTCEDILPCVPFSVA KSVKSLYLGRM FSGTPVIRLRFKRLQPTRLVAEFDRTFDPEGILLFAGGHQ DSTWVLAL RAGRLELQLRYNGVGRVTSSGPVINHGMWQTISVEELARN LVIKVN RDAV MKIAVAGDLFQPERGLYHLNLTVG GIPFHEKDLVQPINPRL DGC MRSWNW LNGEDTTIQETVKVNTRMQCF SVTERGSFYPGSGFAFYSL DYMRTPLDVG TESTWEVEVVAHIRPAADTGVL FALWAPDLRAVPLSVAL VDYHSTKKLKK QLVVLA VEHTALALMEIKVCDGQEHVVTVSLRDGEATLEV DGTRGQSEVS AAQLQERLAVLERHLRSPVLT FAGGLPDVPVTSAPVTAFY RGCMTLEVNR RLLDLDEAAYKHSDITAHSCPPVEPAAA
Predicted molecular weight	101 kDa including tags

Amino acids	1 to 678
Tags	GST tag N-Terminus

Specifications

Our **Abpromise guarantee** covers the use of **ab131810** in the following tested applications.

The application notes include recommended starting dilutions; optimal dilutions/concentrations should be determined by the end user.

Applications	Western blot
	SDS-PAGE
	ELISA
Form	Liquid

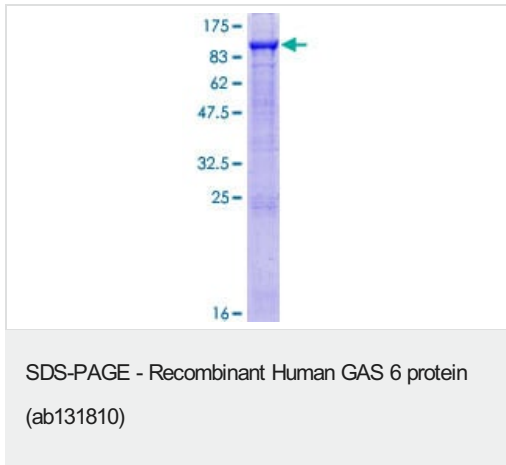
Preparation and Storage

Stability and Storage	Shipped on dry ice. Upon delivery aliquot and store at -80°C. Avoid freeze / thaw cycles. pH: 8.00 Constituents: 0.31% Glutathione, 0.79% Tris HCl
------------------------------	--

General Info

Function	Ligand for tyrosine-protein kinase receptors AXL, TYRO3 and MER whose signaling is implicated in cell growth and survival, cell adhesion and cell migration. GAS6/AXL signaling plays a role in various processes such as endothelial cell survival during acidification by preventing apoptosis, optimal cytokine signaling during human natural killer cell development, hepatic regeneration, gonadotropin-releasing hormone neuron survival and migration, platelet activation, or regulation of thrombotic responses.
Tissue specificity	Plasma. Isoform 1 and isoform 2 are widely expressed. Isoform 1 is the predominant form in spleen.
Sequence similarities	Contains 4 EGF-like domains. Contains 1 Gla (gamma-carboxy-glutamate) domain. Contains 2 laminin G-like domains.
Post-translational modifications	Isoform 1 is proteolytically processed after secretion to yield a N-terminal 36 kDa protein and a C-terminal 50 kDa protein including the laminin G-like domains which activates AXL. Gamma-carboxyglutamate residues are formed by vitamin K dependent carboxylation. These residues are essential for the binding of calcium.
Cellular localization	Secreted.

Images



12.5% SDS-PAGE analysis of ab131810 stained with Coomassie Blue.

Please note: All products are "FOR RESEARCH USE ONLY. NOT FOR USE IN DIAGNOSTIC PROCEDURES"

Our Abpromise to you: Quality guaranteed and expert technical support

- Replacement or refund for products not performing as stated on the datasheet
- Valid for 12 months from date of delivery
- Response to your inquiry within 24 hours
- We provide support in Chinese, English, French, German, Japanese and Spanish
- Extensive multi-media technical resources to help you
- We investigate all quality concerns to ensure our products perform to the highest standards

If the product does not perform as described on this datasheet, we will offer a refund or replacement. For full details of the Abpromise, please visit <https://www.abcam.com/abpromise> or contact our technical team.

Terms and conditions

- Guarantee only valid for products bought direct from Abcam or one of our authorized distributors