

Recombinant human GCSF Receptor protein ab168697

2 Images

Description	
Product name	Recombinant human GCSF Receptor protein
Biological activity	Measured by its ability to inhibit the GCSF-induced proliferation of NFS-60 mouse myeloid cells. The ED ₅₀ for this effect is typically 0.02-2 µg/ml in the presence of 0.125 ng/ml of recombinant Human GCSF.
Purity	> 95 % SDS-PAGE. Lyophilized from 0.22 µm filtered solution.
Endotoxin level	< 1.000 Eu/µg
Expression system	HEK 293 cells
Accession	<u>Q99062</u>
Protein length	Protein fragment
Animal free	No
Nature	Recombinant
Species	Human
Sequence	ECGHISVSAPIVHLGDPITASCIKQNCSHLDPEPQILWRLG AELQPGGR QQRLSDGTQESIITLPHLNHTQAFLSCCLNWGNSLQILDQV ELRAGYPPA IPHNLSCLMNLTSSLICQWEPGPETHLPTSFTLKSFKSRG NCQTQGDSI LDCVPKDGQSHCCIPRKHLLLYQNMGMVQAENALGTSM SPQLCLDPMDV VKLEPPMLRTMDPSPEAAPQAGCLQLCWEPWQPGLHI NQKCELRHKPQR GEASWALVGPLPLEALQYELCGLLPATAYTLQIRCIRWPLP GHWSDWSPS LELRITTERAPTVRDLTWWRQRQLDPRTVQLFWKPVPLEE DSGRIQGYVVS WRPSGQAGAILPLCNTTELSCTFHLPSEAQEVALVAYNSA GTSRPTPVVF SESRGPALTRLHAMARDPHSLWVGWEPPNPWPQGYVIE WLGPPSASNSN KTRWMEQNGRATGFLLENIRPFQLYEIVTPLYQDTMGPS QHVYAYSQE

MAPSHAPELHLKHIGKTWAQLEWVPEPPELGKSPLTHYTI
FWTNAQNQSF
SAILNASSRGFVLHGLEPASLYIHLMMAASQAGATNSTVLT
LMTLTP

Predicted molecular weight	69 kDa including tags
Amino acids	25 to 621
Tags	His tag N-Terminus

Specifications

Our **Abpromise guarantee** covers the use of **ab168697** in the following tested applications.

The application notes include recommended starting dilutions; optimal dilutions/concentrations should be determined by the end user.

Applications	SDS-PAGE Functional Studies
Form	Lyophilized

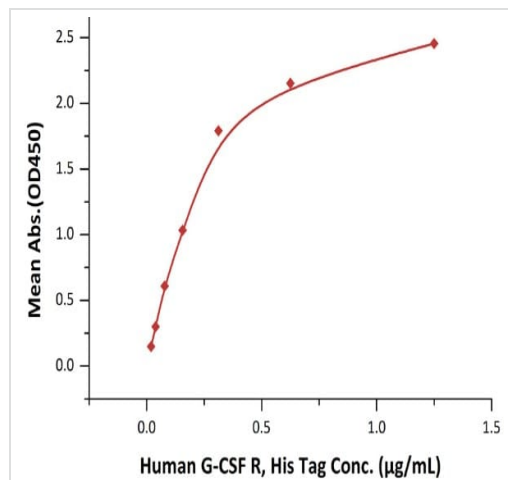
Preparation and Storage

Stability and Storage	Shipped at 4°C. Store at 4°C prior to reconstitution. Store at -80°C. Avoid freeze / thaw cycle. pH: 7.40 Constituents: 95% PBS, 5% Trehalose 5-10% trehalose is commonly used for freeze drying, and after reconstitution, the trehalose is mostly about 3-5%. This product is an active protein and may elicit a biological response in vivo, handle with caution.
Reconstitution	It is recommended to reconstitute the lyophilized protein in sterile deionized water to a final concentration of 250 ug/ml. Solubilize for 30 to 60 minutes at room temperature with occasional gentle mixing. Carrier protein (0.1% HSA or BSA) is strongly recommended for further dilution and long term storage.

General Info

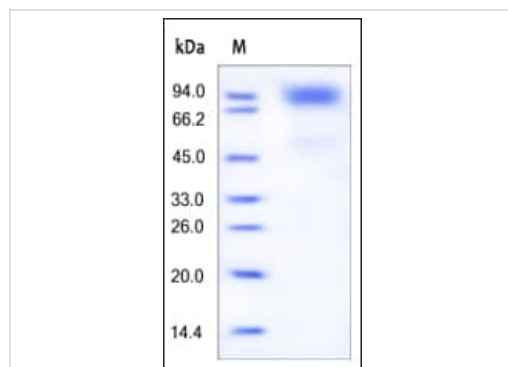
Function	Receptor for granulocyte colony-stimulating factor (CSF3), essential for granulocytic maturation. Plays a crucial role in the proliferation, differentiation and survival of cells along the neutrophilic lineage. In addition it may function in some adhesion or recognition events at the cell surface.
Tissue specificity	One or several isoforms have been found in myelogenous leukemia cell line KG-1, leukemia U-937 cell line, in bone marrow cells, placenta, and peripheral blood granulocytes. Isoform GCSFR-2 is found only in leukemia U-937 cells. Isoform GCSFR-3 is highly expressed in placenta.
Involvement in disease	Hereditary neutrophilia
Sequence similarities	Belongs to the type I cytokine receptor family. Type 2 subfamily. Contains 5 fibronectin type-III domains. Contains 1 Ig-like C2-type (immunoglobulin-like) domain.
Domain	The WSXWS motif appears to be necessary for proper protein folding and thereby efficient intracellular transport and cell-surface receptor binding. The box 1 motif is required for JAK interaction and/or activation.

Images



Immobilized Human GCSF, Tag Free **ab167700** at 2 µg/mL (100 µL/well) can bind ab168697 with a linear range of 0.01-0.313 µg/mL.

Functional Studies - Recombinant human GCSF
Receptor protein (ab168697)



SDS PAGE analysis of ab168697 under reducing conditions and stained overnight with Coomassie Blue.

SDS-PAGE - Recombinant human GCSF Receptor
protein (ab168697)

Please note: All products are "FOR RESEARCH USE ONLY. NOT FOR USE IN DIAGNOSTIC PROCEDURES"

Our Abpromise to you: Quality guaranteed and expert technical support

- Replacement or refund for products not performing as stated on the datasheet
- Valid for 12 months from date of delivery
- Response to your inquiry within 24 hours
- We provide support in Chinese, English, French, German, Japanese and Spanish
- Extensive multi-media technical resources to help you
- We investigate all quality concerns to ensure our products perform to the highest standards

If the product does not perform as described on this datasheet, we will offer a refund or replacement. For full details of the Abpromise,

please visit <https://www.abcam.com/abpromise> or contact our technical team.

Terms and conditions

- Guarantee only valid for products bought direct from Abcam or one of our authorized distributors