

## Product datasheet

### Recombinant Human GCSH protein ab113856

1 Image

#### Description

<b>Product name</b>	Recombinant Human GCSH protein
<b>Purity</b>	> 95 % SDS-PAGE. ab113856 was purified using conventional chromatography techniques.
<b>Expression system</b>	Escherichia coli
<b>Accession</b>	<b><u>P23434</u></b>
<b>Protein length</b>	Full length protein
<b>Animal free</b>	No
<b>Nature</b>	Recombinant
<b>Species</b>	Human
<b>Sequence</b>	<b>MGSSHHHHHHSSGLVPRGSHMGSM</b> SVRKFT <del>TEKHEWVT</del> TENGIGTVGISNF AQEALGDVVYCSLPEVGTKLNKQDEFGALESVKAASELY SPLSGEVTEIN EALAENPGLV <del>NKSCYEDGWLIKMTLSNPSELDELMSEEA</del> YEKYKSIEE
<b>Predicted molecular weight</b>	16 kDa including tags
<b>Amino acids</b>	49 to 173
<b>Tags</b>	His tag N-Terminus

#### Specifications

Our **Abpromise guarantee** covers the use of **ab113856** in the following tested applications.

The application notes include recommended starting dilutions; optimal dilutions/concentrations should be determined by the end user.

<b>Applications</b>	Mass Spectrometry SDS-PAGE
<b>Mass spectrometry</b>	MALDI-TOF
<b>Form</b>	Liquid

#### Preparation and Storage

<b>Stability and Storage</b>	Shipped at 4°C. Store at +4°C short term (1-2 weeks). Upon delivery aliquot. Store at -20°C or -
------------------------------	--

80°C. Avoid freeze / thaw cycle.

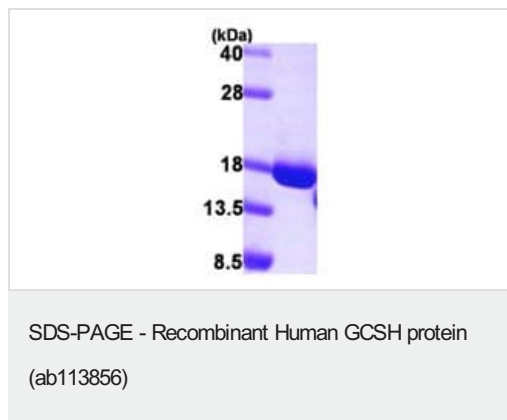
pH: 8.00

Constituents: 0.02% DTT, 0.32% Tris HCl, 10% Glycerol (glycerin, glycerine), 0.88% Sodium chloride

## General Info

<b>Function</b>	The glycine cleavage system catalyzes the degradation of glycine. The H protein shuttles the methylamine group of glycine from the P protein to the T protein.
<b>Involvement in disease</b>	Defects in GCSH are a cause of non-ketotic hyperglycinemia (NKH) [MIM:605899]; also known as glycine encephalopathy (GCE). NKH is an autosomal recessive disease characterized by accumulation of a large amount of glycine in body fluid and by severe neurological symptoms.
<b>Sequence similarities</b>	Belongs to the gcvH family. Contains 1 lipoyl-binding domain.
<b>Cellular localization</b>	Mitochondrion.

## Images



15% SDS-PAGE analysis of 3 µg ab113856.

**Please note:** All products are "FOR RESEARCH USE ONLY. NOT FOR USE IN DIAGNOSTIC PROCEDURES"

## Our Abpromise to you: Quality guaranteed and expert technical support

- Replacement or refund for products not performing as stated on the datasheet
- Valid for 12 months from date of delivery
- Response to your inquiry within 24 hours
- We provide support in Chinese, English, French, German, Japanese and Spanish
- Extensive multi-media technical resources to help you
- We investigate all quality concerns to ensure our products perform to the highest standards

If the product does not perform as described on this datasheet, we will offer a refund or replacement. For full details of the Abpromise, please visit <https://www.abcam.com/abpromise> or contact our technical team.

## Terms and conditions

---

- Guarantee only valid for products bought direct from Abcam or one of our authorized distributors