

Recombinant Human GLUT5 protein ab152682

1 Image

Description

Product name	Recombinant Human GLUT5 protein
Expression system	Wheat germ
Accession	<b><u>P22732</u></b>
Protein length	Full length protein
Animal free	No
Nature	Recombinant
Species	Human
Sequence	MEQQDQSMKEGRLTLVLALATLIAAFGSSFQYGYNVAAVN SPALLMQQFY NETYYGRTGEFMEDFPLTLLWSVTVSMFPFGGFIGSLLVG PLVNFGRKG ALLFNNIFSVPAILMGCSRVATSFELIIISRLLVGICAGVSSN VVPMYL GELAPKNLRGALGVVPQLFITVGILVAQIFGLRNLLANVDG WPILLGLTG VPAALQLLLLPPFPESPRYLLIQKKDEAAAKKALQTLRGW DSVDREVAEI RQEDEAEKAAGFISVLKLFMRSLRWQLLSIIVLMGGQQL SGVNAYYYA DQYLSAGVPEEHVQYVTAGTGAVNVVMTFCAVFVVELLG RRLLLLLGFS ICLIACCVLTAALALQDTVSWMPYISIVCVISYVIGHALGPSP PALLIT EIFLQSSRPSAFMVGGSVHWLSNFTVGLIFPFIQEGLPYS FMFAVICL LTTMFLMPETKAKTFIEINQIFTKMKNKVSEVYPEKEELKELP PVTSE Q
Predicted molecular weight	81 kDa including tags
Amino acids	1 to 501
Tags	GST tag N-Terminus

Specifications

Our **Abpromise guarantee** covers the use of **ab152682** in the following tested applications.

The application notes include recommended starting dilutions; optimal dilutions/concentrations should be determined by the end user.

<b>Applications</b>	Western blot
	SDS-PAGE
	ELISA
<b>Form</b>	Liquid
<b>Additional notes</b>	This product was previously labelled as Glucose Transporter 5 GLUT5.
	Boiling treatment may cause the aggregation of membrane protein in the stacking gels, results in the failure to detect the membrane protein in the separating gels.

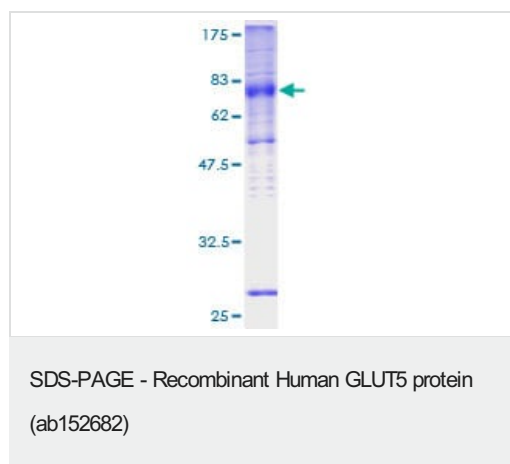
## Preparation and Storage

<b>Stability and Storage</b>	Shipped on dry ice. Upon delivery aliquot and store at -80°C. Avoid freeze / thaw cycles.
	pH: 8.00
	Constituents: 0.31% Glutathione, 0.79% Tris HCl

## General Info

<b>Function</b>	Cytochalasin B-sensitive carrier. Seems to function primarily as a fructose transporter.
<b>Tissue specificity</b>	Expressed in small intestine, and at much lower levels in kidney, skeletal muscle, and adipose tissue.
<b>Sequence similarities</b>	Belongs to the major facilitator superfamily. Sugar transporter (TC 2.A.1.1) family. Glucose transporter subfamily.
<b>Cellular localization</b>	Membrane.

## Images



12.5% SDS-PAGE analysis of ab152682 stained with Coomassie Blue.

**Please note:** All products are "FOR RESEARCH USE ONLY. NOT FOR USE IN DIAGNOSTIC PROCEDURES"

### **Our Abpromise to you: Quality guaranteed and expert technical support**

---

- Replacement or refund for products not performing as stated on the datasheet
- Valid for 12 months from date of delivery
- Response to your inquiry within 24 hours
  
- We provide support in Chinese, English, French, German, Japanese and Spanish
- Extensive multi-media technical resources to help you
- We investigate all quality concerns to ensure our products perform to the highest standards

If the product does not perform as described on this datasheet, we will offer a refund or replacement. For full details of the Abpromise, please visit [\*\*https://www.abcam.com/abpromise\*\*](https://www.abcam.com/abpromise) or contact our technical team.

### **Terms and conditions**

---

- Guarantee only valid for products bought direct from Abcam or one of our authorized distributors