

Recombinant Human GNAI1 protein ab113585

1 References 1 Image

Description

Product name	Recombinant Human GNAI1 protein
Purity	> 95 % SDS-PAGE. ab113585 was purified using conventional chromatography.
Expression system	Escherichia coli
Accession	P63096
Protein length	Full length protein
Animal free	No
Nature	Recombinant
Species	Human
Sequence	MGSSHHHHHHSSGLVPRGSHMGSMGCTLSAEDKAAVE RSKMIDRNLREDG EKAAREVKLLLLGAGESGKSTVKQMKIIHEAGYSEEECKQ YKAVVYSNT IQSIIAIRAMGRLLKIDFGDSARADDARQLFVLGAAEEGFM TAEAGVI KRLWKDSGVQACFNRSREYQLNDSAAYLNDLDRIAQPN YIPTQQDVLRT RVKTTGIVETHFTFKDLHFKMFDVGGQRSEKRWIHCPEG VTAIIFCVAL SDYDLVLAEDEEMNRMHESMKLFDSICNNKWFTDTSIILFL NKKDLFEED IKKSPLTICYPEYAGSNTYEEAAAYIQCQFEDLNKRKDTKEI YTHFTCAT DTKNVQVFVDAVTDVLIKNNLKDCGLF
Predicted molecular weight	43 kDa including tags
Amino acids	1 to 354
Tags	His tag N-Terminus

Specifications

Our **Abpromise guarantee** covers the use of **ab113585** in the following tested applications.

The application notes include recommended starting dilutions; optimal dilutions/concentrations should be determined by the end user.

Applications	SDS-PAGE
--------------	----------

	Mass Spectrometry
Mass spectrometry	MALDI-TOF
Form	Liquid
Additional notes	This product was previously labelled as G protein alpha inhibitor 1, G Protein alpha Inhibitor 1+2

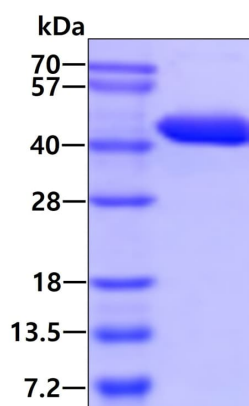
Preparation and Storage

Stability and Storage	Shipped at 4°C. Store at +4°C short term (1-2 weeks). Upon delivery aliquot. Store at -20°C or -80°C. Avoid freeze / thaw cycle. pH: 8.00 Constituents: 0.32% Tris HCl, 10% Glycerol (glycerin, glycerine)
------------------------------	--

General Info

Function	Guanine nucleotide-binding proteins (G proteins) are involved as modulators or transducers in various transmembrane signaling systems. The G(i) proteins are involved in hormonal regulation of adenylate cyclase: they inhibit the cyclase in response to beta-adrenergic stimuli. The inactive GDP-bound form prevents the association of RGS14 with centrosomes and is required for the translocation of RGS14 from the cytoplasm to the plasma membrane. May play a role in cell division.
Sequence similarities	Belongs to the G-alpha family. G(i/o/t/z) subfamily.
Cellular localization	Nucleus. Cytoplasm. Cell membrane. Cytoplasm > cytoskeleton > centrosome. Localized at the plasma membrane throughout mitosis. Colocalizes with RIC8A and RGS14 at the plasma membrane (By similarity). Localizes in the centrosomes of interphase and mitotic cells, but not in centrosomes during cytokinesis. Detected at the cleavage furrow or the midbody.

Images



3ug by SDS-PAGE under reducing conditions and visualized by coomassie blue stain.

SDS-PAGE - Recombinant Human GNAI1 protein
(ab113585)

Please note: All products are "FOR RESEARCH USE ONLY. NOT FOR USE IN DIAGNOSTIC PROCEDURES"

Our Abpromise to you: Quality guaranteed and expert technical support

- Replacement or refund for products not performing as stated on the datasheet
- Valid for 12 months from date of delivery
- Response to your inquiry within 24 hours

- We provide support in Chinese, English, French, German, Japanese and Spanish
- Extensive multi-media technical resources to help you
- We investigate all quality concerns to ensure our products perform to the highest standards

If the product does not perform as described on this datasheet, we will offer a refund or replacement. For full details of the Abpromise, please visit <https://www.abcam.com/abpromise> or contact our technical team.

Terms and conditions

- Guarantee only valid for products bought direct from Abcam or one of our authorized distributors