

Product datasheet

Recombinant Human GNPDA1 protein ab100960

1 Image

Description

Product name	Recombinant Human GNPDA1 protein
Purity	> 90 % SDS-PAGE. ab100960 is purified using conventional chromatography techniques.
Expression system	Escherichia coli
Accession	<u>P46926</u>
Protein length	Full length protein
Animal free	No
Nature	Recombinant
Species	Human
Sequence	MGSSHHHHHH SSGLVPRGSH MKLIILEHYS QASEWAAKYI RNRIQFNPG PEKYFTLG LP TGSTPLGCYK KLIEYYKNGD LSFKYVKTFN MDEYVGLPRD HPESYHSFMW NNFFKHID IH PENTHILDGN AVDLQAECD A FEEKIKAAGG IELFVGGIGP DGHIAFNEPG SSLVSRTRVK TLAMDTILAN ARFFDGELTK VPTMALTVGV GTVMDAREVM ILITGAHKAF ALYKAIEEGV NHMWTVSAFQ QHPRTVFVCD EDATLELKVK TVKYFKGLML VHNKLVDPLY SIKEKET EKS QSSKKPYSD
Predicted molecular weight	35 kDa
Amino acids	1 to 289
Tags	His tag N-Terminus

Specifications

Our **Abpromise guarantee** covers the use of **ab100960** in the following tested applications.

The application notes include recommended starting dilutions; optimal dilutions/concentrations should be determined by the end user.

Applications	SDS-PAGE Mass Spectrometry
Mass spectrometry	MALDI-TOF
Form	Liquid

Preparation and Storage

Stability and Storage

Shipped at 4°C. Upon delivery aliquot and store at -20°C or -80°C. Avoid repeated freeze / thaw cycles.

pH: 8.00

Constituents: 0.0154% DTT, 0.316% Tris HCl, 20% Glycerol (glycerin, glycerine), 0.29% Sodium chloride

General Info

Function

Seems to trigger calcium oscillations in mammalian eggs. These oscillations serve as the essential trigger for egg activation and early development of the embryo.

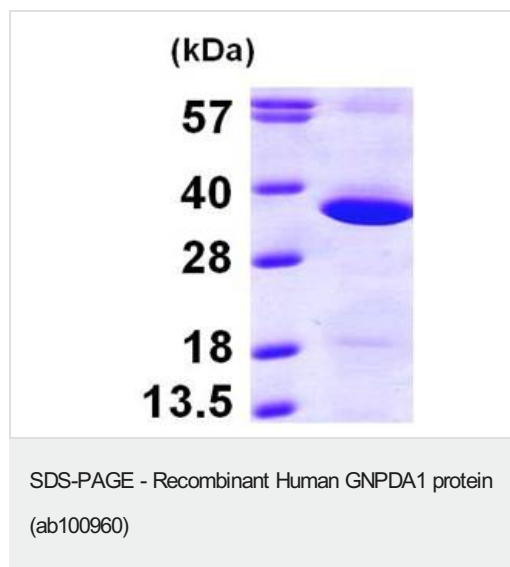
Sequence similarities

Belongs to the glucosamine/galactosamine-6-phosphate isomerase family.

Cellular localization

Cytoplasm.

Images



15% SDS-PAGE showing ab100960 at approximately 34.8kDa (3µg).

Please note: All products are "FOR RESEARCH USE ONLY. NOT FOR USE IN DIAGNOSTIC PROCEDURES"

Our Abpromise to you: Quality guaranteed and expert technical support

- Replacement or refund for products not performing as stated on the datasheet
- Valid for 12 months from date of delivery
- Response to your inquiry within 24 hours
- We provide support in Chinese, English, French, German, Japanese and Spanish
- Extensive multi-media technical resources to help you
- We investigate all quality concerns to ensure our products perform to the highest standards

If the product does not perform as described on this datasheet, we will offer a refund or replacement. For full details of the Abpromise, please visit <https://www.abcam.com/abpromise> or contact our technical team.

Terms and conditions

- Guarantee only valid for products bought direct from Abcam or one of our authorized distributors