

Recombinant Human GPCR GPR85 protein ab162723

1 Image

Description

Product name	Recombinant Human GPCR GPR85 protein		
Expression system	Wheat germ		
Accession	P60893		
Protein length	Full length protein		
Animal free	No		
Nature	Recombinant		
Species	Human		
Sequence	MANYSHAADNILQNLSP LTAFLKLTSLGFIIGVSVVGNLLISIL LVKDKT LHRAPYYFLDLCCSDILRSAICFPFVFN SVKNGSTWTYGT LTCKVIAFL GVLSCFH TAFMLFCISVTRYLAIAHHRFYTKRLTFWTCLAVI CMVWTL SV AMAFPPVLDVGTYSFIREDQCAFQHRSFRANDSLGFML LLALILLATQL VYLKLIFFVHDRRKMKPVQFVA AVSQNWTFHGPGASGQA AANWLAGFGRG PTPPTLLGIRQNANTTGRRRL LVDEFKMEKRISRMFYIMTF LFLTLWGP YLVACYWRVFARGPVVPGGFLTAAVWMSFAQAGINPFVC IFSNRELRRCF STTLLYCRKSRLPREPYCVI		
Amino acids	1 to 370		
Tags	GST tag N-Terminus		

Specifications

Our Abpromise guarantee covers the use of ab162723 in the following tested applications.	
The application notes include recommended starting dilutions; optimal dilutions/concentrations should be determined by the end user.	
Applications	ELISA Western blot
Form	Liquid
Additional notes	

Preparation and Storage

Stability and Storage

Shipped on dry ice. Upon delivery aliquot and store at -80°C. Avoid freeze / thaw cycles.

pH: 8.00

Constituents: 0.31% Glutathione, 0.79% Tris HCl

General Info

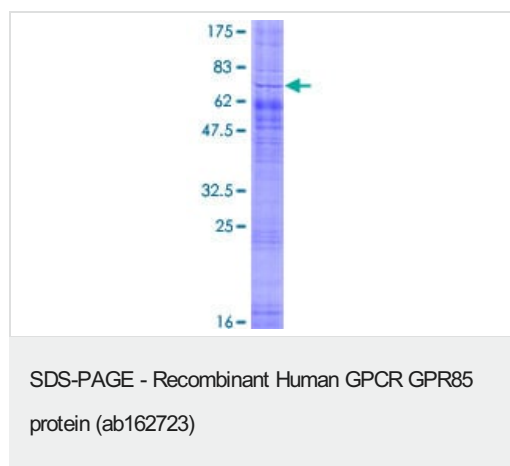
Relevance

G protein-coupled receptors (GPCRs, or GPRs) contain 7 transmembrane domains and transduce extracellular signals through heterotrimeric G proteins. GPCR GPR85 is a member of this family (subfamily Orphan-A). GPCR GPR85 has been reported to be expressed in several areas of human and rat CNS (Matsumoto et al., 2000), as well as in genital organs. ESTs have been isolated from B-cell/lung/testis, brain, testis, and embryo libraries, as well as many mouse tissue libraries.

Cellular localization

Cell Membrane

Images



ab162723 on a 12.5% SDS-PAGE stained with Coomassie Blue.

Please note: All products are "FOR RESEARCH USE ONLY. NOT FOR USE IN DIAGNOSTIC PROCEDURES"

Our Abpromise to you: Quality guaranteed and expert technical support

- Replacement or refund for products not performing as stated on the datasheet
- Valid for 12 months from date of delivery
- Response to your inquiry within 24 hours
- We provide support in Chinese, English, French, German, Japanese and Spanish
- Extensive multi-media technical resources to help you
- We investigate all quality concerns to ensure our products perform to the highest standards

If the product does not perform as described on this datasheet, we will offer a refund or replacement. For full details of the Abpromise,

please visit <https://www.abcam.com/abpromise> or contact our technical team.

Terms and conditions

- Guarantee only valid for products bought direct from Abcam or one of our authorized distributors