

## Product datasheet

### Recombinant Human GST-1 protein ab152884

[1 Image](#)

#### Description

<b>Product name</b>	Recombinant Human GST-1 protein
<b>Expression system</b>	Wheat germ
<b>Accession</b>	<b><u>O43916</u></b>
<b>Protein length</b>	Protein fragment
<b>Animal free</b>	No
<b>Nature</b>	Recombinant
<b>Species</b>	Human
<b>Sequence</b>	PPGPADLVLEEGDCVRKCGLLNLTVAAEACRERSHVAIK TVRVPEVNDLR ALVEDPRLNLKVIQLVRDPRGILASRSETFRDTYRLWRLWY GTGRKPYNL
<b>Predicted molecular weight</b>	37 kDa including tags
<b>Amino acids</b>	168 to 267

#### Specifications

Our **Abpromise guarantee** covers the use of **ab152884** in the following tested applications.

The application notes include recommended starting dilutions; optimal dilutions/concentrations should be determined by the end user.

<b>Applications</b>	ELISA SDS-PAGE Western blot
<b>Form</b>	Liquid
<b>Additional notes</b>	This product was previously labelled as Carbohydrate sulfotransferase 1.

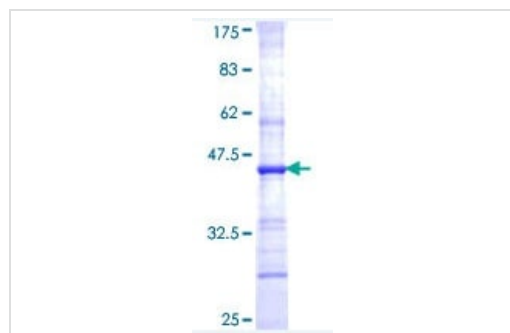
#### Preparation and Storage

<b>Stability and Storage</b>	Shipped on dry ice. Upon delivery aliquot and store at -80°C. Avoid freeze / thaw cycles. pH: 8.00 Constituents: 0.31% Glutathione, 0.79% Tris HCl
------------------------------	--

## General Info

<b>Function</b>	Catalyzes the transfer of sulfate to position 6 of galactose (Gal) residues of keratan. Has a preference for sulfating keratan sulfate, but it also transfers sulfate to the unsulfated polymer. The sulfotransferase activity on sialyl LacNAc structures is much higher than the corresponding desialylated substrate, and only internal Gal residues are sulfated. May function in the sulfation of sialyl N-acetyllactosamine oligosaccharide chains attached to glycoproteins. Participates in biosynthesis of selectin ligands. Selectin ligands are present in high endothelial cells (HEVs) and play a central role in lymphocyte homing at sites of inflammation.
<b>Tissue specificity</b>	Widely expressed at low level. Expressed in brain and skeletal muscle. Expressed by high endothelial cells (HEVs) and leukocytes.
<b>Sequence similarities</b>	Belongs to the sulfotransferase 1 family. Gal/GlcNAc/GalNAc subfamily.
<b>Cellular localization</b>	Golgi apparatus membrane.

## Images



12.5% SDS-PAGE analysis of ab152884 stained with Coomassie Blue.

SDS-PAGE - Recombinant Human GST-1 protein  
(ab152884)

**Please note:** All products are "FOR RESEARCH USE ONLY. NOT FOR USE IN DIAGNOSTIC PROCEDURES"

## Our Abpromise to you: Quality guaranteed and expert technical support

- Replacement or refund for products not performing as stated on the datasheet
- Valid for 12 months from date of delivery
- Response to your inquiry within 24 hours
- We provide support in Chinese, English, French, German, Japanese and Spanish
- Extensive multi-media technical resources to help you
- We investigate all quality concerns to ensure our products perform to the highest standards

If the product does not perform as described on this datasheet, we will offer a refund or replacement. For full details of the Abpromise, please visit <https://www.abcam.com/abpromise> or contact our technical team.

## **Terms and conditions**

---

- Guarantee only valid for products bought direct from Abcam or one of our authorized distributors