

## Product datasheet

# Recombinant human Haspin protein ab104026

[2 Images](#)

### Description

---

<b>Product name</b>	Recombinant human Haspin protein
<b>Biological activity</b>	The Specific activity of ab104026 was determined to be 18 nmol/min/mg.
<b>Purity</b>	> 75 % SDS-PAGE. Purity was determined to be >75% by densitometry. Affinity purified.
<b>Expression system</b>	Baculovirus infected Sf9 cells
<b>Accession</b>	<b><u>Q8TF76</u></b>
<b>Protein length</b>	Protein fragment
<b>Animal free</b>	No
<b>Nature</b>	Recombinant
<b>Species</b>	Human
<b>Predicted molecular weight</b>	64 kDa including tags
<b>Amino acids</b>	470 to 798

### Specifications

---

Our **Abpromise guarantee** covers the use of **ab104026** in the following tested applications.

The application notes include recommended starting dilutions; optimal dilutions/concentrations should be determined by the end user.

<b>Applications</b>	Functional Studies Western blot
<b>Form</b>	Liquid

### Preparation and Storage

---

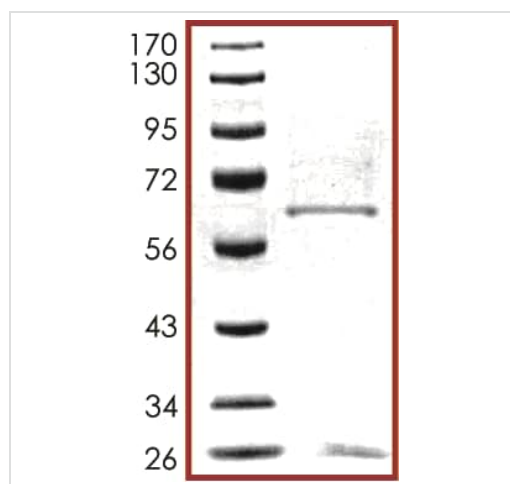
<b>Stability and Storage</b>	Shipped on dry ice. Upon delivery aliquot and store at -80°C. Avoid freeze / thaw cycles. pH: 7.50 Constituents: 0.307% Glutathione, 0.00174% PMSF, 0.00385% DTT, 0.79% Tris HCl, 0.00292% EDTA, 25% Glycerol (glycerin, glycerine), 0.87% Sodium chloride This product is an active protein and may elicit a biological response in vivo, handle with caution.
------------------------------	--

### General Info

## General info

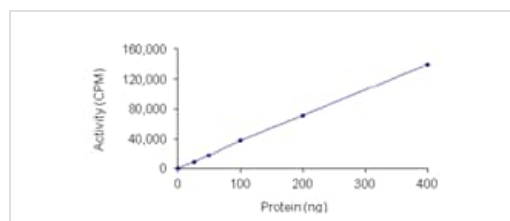
<b>Function</b>	Required for normal alignment of chromosomes at metaphase. Phosphorylates histone H3 'Thr-3' during mitosis.
<b>Tissue specificity</b>	Strongly expressed in testis. Also present in thymus and bone marrow and low levels observed in prostate, intestine, lung, spleen and lymph node. Expressed in fetal skin, liver, kidney and small intestine and also in proliferating but not non-proliferating cell lines.
<b>Sequence similarities</b>	Belongs to the protein kinase superfamily. Ser/Thr protein kinase family. Haspin subfamily. Contains 1 protein kinase domain.
<b>Post-translational modifications</b>	Autophosphorylated on both serine and threonine residues (By similarity). Phosphorylated during mitosis. Phosphorylated upon DNA damage, probably by ATM or ATR.
<b>Cellular localization</b>	Nucleus.

## Images



SDS-PAGE - Recombinant human Haspin protein (ab104026)

SDS-PAGE showing ab104026 at approximately 64kDa.



Functional Studies - Recombinant human Haspin protein (ab104026)

The Specific activity of ab104026 was determined to be 18 nmol/min/mg.

**Please note:** All products are "FOR RESEARCH USE ONLY. NOT FOR USE IN DIAGNOSTIC PROCEDURES"

## Our Promise to you: Quality guaranteed and expert technical support

- Replacement or refund for products not performing as stated on the datasheet

- Valid for 12 months from date of delivery
- Response to your inquiry within 24 hours
  
- We provide support in Chinese, English, French, German, Japanese and Spanish
- Extensive multi-media technical resources to help you
- We investigate all quality concerns to ensure our products perform to the highest standards

If the product does not perform as described on this datasheet, we will offer a refund or replacement. For full details of the Abpromise, please visit <https://www.abcam.com/abpromise> or contact our technical team.

### **Terms and conditions**

---

- Guarantee only valid for products bought direct from Abcam or one of our authorized distributors