

## Product datasheet

# Recombinant Human HCE protein ab183246

[1 Image](#)

### Description

---

**Product name** Recombinant Human HCE protein

**Purity** > 85 % SDS-PAGE.

**Expression system** Escherichia coli

**Accession** [O60942](#)

**Protein length** Full length protein

**Animal free** No

**Nature** Recombinant

**Species** Human

**Sequence**

```
MGSSHHHHHH SSGLVPRGSH MGSMAHNKIP
PRWLNCPRRG QPVAGRFLPL KTMLGPRYDS
QVAEENRFHP SMLSNYLKSL KVKMGLLVDL
TNTSRFYDRN DIEKEGIKYI KLQCKGHGEC PTENTETFI
RLCERFNERN PPELIGVHCT HGFNRTGFLI
CAFLVEKMDW SIEAAVATFA QARPPGIYKG
DYLKELFRRY GDIEEAPPPP LLPDWCFEDD
EDEDEDEDGK KESEPGSSAS FGKRRKERLK
LGAIFLEGVT VKGVTQVTTQ PKLGEVQQKC
HQFCGWEGSG FPGAQPVSM D KQNIKLLDLK
PYKVSWKADG TRYMMLIDGT NEVF MIDRDN
SVFHVSNLEF PFRKDLRMHL SNTLLDGEMI
IDRVNGQAVP RYLIDYIKF NSQPVGDCDF NVRLQCIERE
IISPRHEKMK TGLIDKTQEP FSVRNKPFFD ICTSRKLLG
NFAKEVSHEM DGLIFQPTGK YKPGRCDDIL
KWKPPSLNSV DFRLKITRMG GEGLLPQNVG
LLYVGGYERP FAQIKVTKEL KQYDNKIIEC KFENNSWVFM
RQRD KSF PN AYTAMAVCN SISNPVTKEM
LFEFIDRCTA ASQGQKRKHH LDPDTELMPP
PPPKRPRPLT
```

**Predicted molecular weight** 71 kDa including tags

**Amino acids** 1 to 597

**Tags** His tag N-Terminus

**Additional sequence information** NP\_003791.

## Specifications

---

Our **Abpromise guarantee** covers the use of **ab183246** in the following tested applications.

The application notes include recommended starting dilutions; optimal dilutions/concentrations should be determined by the end user.

**Applications** SDS-PAGE

**Form** Liquid

## Preparation and Storage

---

**Stability and Storage** Shipped at 4°C. Store at +4°C short term (1-2 weeks). Upon delivery aliquot. Store at -20°C or -80°C. Avoid freeze / thaw cycle.

pH: 7.50

Constituents: 0.32% Tris HCl, 1.17% Sodium chloride, 40% Glycerol (glycerin, glycerine), 0.03% DTT, 0.002% PMSF

## General Info

---

**Function** Bifunctional mRNA-capping enzyme exhibiting RNA 5'-triphosphatase activity in the N-terminal part and mRNA guanylyltransferase activity in the C-terminal part. Catalyzes the first two steps of cap formation: by removing the gamma-phosphate from the 5'-triphosphate end of nascent mRNA to yield a diphosphate end, and by transferring the gmp moiety of GTP to the 5'-diphosphate terminus.

**Tissue specificity** Isoform 1 and isoform 4 (at a lesser extent) are expressed in cerebrum, cerebellum, thyroid, lung, heart, liver, kidney, spleen, large intestine, testis, skin and muscle.

**Sequence similarities** In the N-terminal section; belongs to the non-receptor class of the protein-tyrosine phosphatase family.

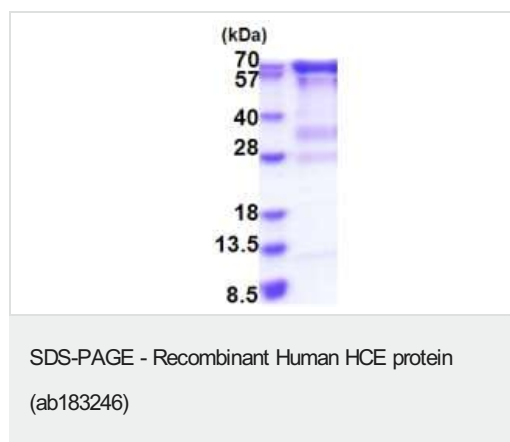
In the C-terminal section; belongs to the eukaryotic GTase family.

**Cellular localization** Nucleus.

---

## Images

---



15% SDS-PAGE analysis of ab183246 (3µg).

**Please note:** All products are "FOR RESEARCH USE ONLY. NOT FOR USE IN DIAGNOSTIC PROCEDURES"

## **Our Abpromise to you: Quality guaranteed and expert technical support**

---

- Replacement or refund for products not performing as stated on the datasheet
- Valid for 12 months from date of delivery
- Response to your inquiry within 24 hours
  
- We provide support in Chinese, English, French, German, Japanese and Spanish
- Extensive multi-media technical resources to help you
- We investigate all quality concerns to ensure our products perform to the highest standards

If the product does not perform as described on this datasheet, we will offer a refund or replacement. For full details of the Abpromise, please visit <https://www.abcam.com/abpromise> or contact our technical team.

## **Terms and conditions**

---

- Guarantee only valid for products bought direct from Abcam or one of our authorized distributors