

Product datasheet

Recombinant Human Heme Oxygenase 1 protein  
ab85243

2 Images

Description

Product name	Recombinant Human Heme Oxygenase 1 protein
Purity	> 95 % SDS-PAGE. Purity was determined to be >95% by densitometry.
Expression system	Escherichia coli
Accession	<u>P09601</u>
Protein length	Full length protein
Animal free	No
Nature	Recombinant
Species	Human
Sequence	MERPQPD SMPQDLSEALKEATKEVHTQAENAEFMRNFQ KGQVTRDGFKL V MASLYHIMVALEEEIERNKESPVFAPVYFPEELHRKAALEQ DLAFWYGPR WQEVIPYTPAMQRYVKRLHEVGRTEPELLVAHAYTRYLGD LSGGQVLKKI AQKALDLPSSGEGLAFFTFPNIASATKFKQLYRSRMNSLE MTPAVRQ RVI EEAKTAFLLNIQLFEELQELLTHDTKDQSPSRAPGLRQRA SNKVQDSAPV ETPRGKPPLNTRSQAPLLRWVLTLSFLVATVAVGLYAM
Predicted molecular weight	56 kDa including tags
Amino acids	1 to 288
Tags	GST tag N-Terminus
Description	Recombinant Human Heme Oxygenase 1 protein (Tagged)

Specifications

Our **Abpromise guarantee** covers the use of **ab85243** in the following tested applications.

The application notes include recommended starting dilutions; optimal dilutions/concentrations should be determined by the end user.

Applications	SDS-PAGE
--------------	----------

Western blot

Form

Liquid

## Preparation and Storage

### Stability and Storage

Shipped on dry ice. Upon delivery aliquot and store at -80°C. Avoid freeze / thaw cycles.

pH: 7.50

Constituents: 0.00174% PMSF, 0.00385% DTT, 0.79% Tris HCl, 25% Glycerol (glycerin, glycerine), 0.87% Sodium chloride

## General Info

### Function

Heme oxygenase cleaves the heme ring at the alpha methene bridge to form biliverdin. Biliverdin is subsequently converted to bilirubin by biliverdin reductase. Under physiological conditions, the activity of heme oxygenase is highest in the spleen, where senescent erythrocytes are sequestered and destroyed.

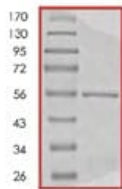
### Sequence similarities

Belongs to the heme oxygenase family.

### Cellular localization

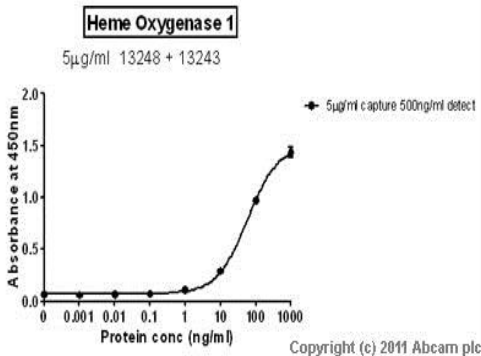
Microsome. Endoplasmic reticulum.

## Images



SDS-PAGE - Recombinant Human Heme  
Oxygenase 1 protein (Tagged) (ab85243)

SDS-PAGE showing ab85243 at approximately 56kDa.



Sandwich ELISA - Recombinant Human Heme  
Oxygenase 1 protein (Tagged) (ab85243)

Standard Curve for Heme Oxygenase 1 (Analyte: **Heme Oxygenase 1 protein (Tagged) (ab85243)**); dilution range 1pg/ml to 1µg/ml using Capture Antibody **Mouse monoclonal [HO-1-1] to Heme Oxygenase 1 (ab13248)** at 5µg/ml and Detector Antibody **Rabbit polyclonal to Heme Oxygenase 1 (ab13243)** at 0.5µg/ml.

**Please note:** All products are "FOR RESEARCH USE ONLY. NOT FOR USE IN DIAGNOSTIC PROCEDURES"

### **Our Abpromise to you: Quality guaranteed and expert technical support**

---

- Replacement or refund for products not performing as stated on the datasheet
- Valid for 12 months from date of delivery
- Response to your inquiry within 24 hours
- We provide support in Chinese, English, French, German, Japanese and Spanish
- Extensive multi-media technical resources to help you
- We investigate all quality concerns to ensure our products perform to the highest standards

If the product does not perform as described on this datasheet, we will offer a refund or replacement. For full details of the Abpromise, please visit <https://www.abcam.com/abpromise> or contact our technical team.

### **Terms and conditions**

---

- Guarantee only valid for products bought direct from Abcam or one of our authorized distributors