

## Product datasheet

# Recombinant Human Hex protein ab167885

1 Image

### Description

<b>Product name</b>	Recombinant Human Hex protein
<b>Purity</b>	> 85 % SDS-PAGE. ab167885 is purified using conventional chromatography techniques.
<b>Expression system</b>	Escherichia coli
<b>Accession</b>	<b><u>Q03014</u></b>
<b>Protein length</b>	Full length protein
<b>Animal free</b>	No
<b>Nature</b>	Recombinant
<b>Species</b>	Human
<b>Sequence</b>	<pre> MGSSHHHHHH SSGLVPRGSH MGSMQYPHPG PAAGAVGVPL YAPTLLQPA HPTPFYIEDI LGRGPAAPTP APTLPSPNSS FTSLVSPYRT PVYEPTPIHP AFSHHSAAAL AAAYGPGGFG GPLYPFRTV NDYTHALLRH DPLGKPLLWS PFLQRPLHKR KGGQVRFSDND QTIELEKKFE TQKYLSPPER KRLAKMLQLS ERQVKTWfqN RRAKWRRLKQ ENPQSNKKEE LESLDSSCDQ RQDLPSEQNK GASLDSSQCS PSPASQEDLE SEISEDSDQE VDIEGDKSYF NAG           </pre>
<b>Predicted molecular weight</b>	32 kDa including tags
<b>Amino acids</b>	1 to 270
<b>Tags</b>	His tag N-Terminus

### Specifications

Our **Abpromise guarantee** covers the use of **ab167885** in the following tested applications.

The application notes include recommended starting dilutions; optimal dilutions/concentrations should be determined by the end user.

<b>Applications</b>	SDS-PAGE Mass Spectrometry
<b>Mass spectrometry</b>	MALDI-TOF
<b>Form</b>	Liquid

## Preparation and Storage

---

### Stability and Storage

Shipped at 4°C. Store at +4°C short term (1-2 weeks). Upon delivery aliquot. Store at -20°C or -80°C. Avoid freeze / thaw cycle.

pH: 8.00

Constituents: 0.02% DTT, 0.32% Tris HCl, 40% Glycerol (glycerin, glycerine), 0.88% Sodium chloride

## General Info

---

### Function

Recognizes the DNA sequence 5'-ATTAA-3'. Transcriptional repressor. May play a role in hematopoietic differentiation. Establishes anterior identity at two levels; acts early to enhance canonical WNT-signaling by repressing expression of TLE4, and acts later to inhibit NODAL-signaling by directly targeting NODAL.

### Tissue specificity

Liver and promyelocytic leukemia cell line HL60.

### Sequence similarities

Contains 1 homeobox DNA-binding domain.

### Developmental stage

Expressed during hematopoiesis.

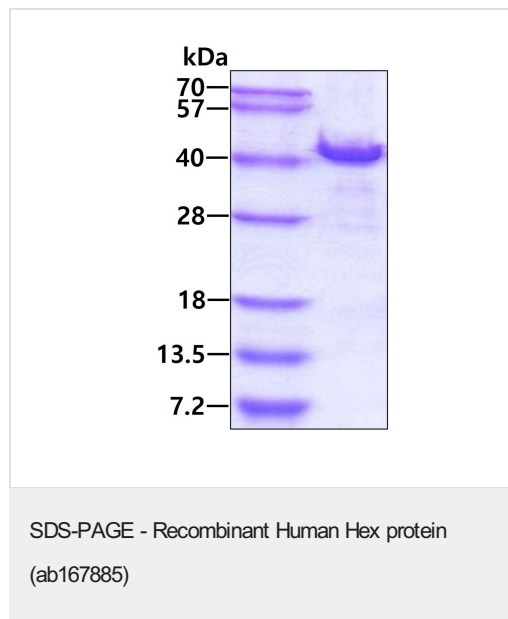
### Cellular localization

Nucleus.

---

## Images

---



SDS-PAGE analysis of ab167885 (3 µg).

**Please note:** All products are "FOR RESEARCH USE ONLY. NOT FOR USE IN DIAGNOSTIC PROCEDURES"

## Our Abpromise to you: Quality guaranteed and expert technical support

---

- Replacement or refund for products not performing as stated on the datasheet
- Valid for 12 months from date of delivery
- Response to your inquiry within 24 hours

- We provide support in Chinese, English, French, German, Japanese and Spanish
- Extensive multi-media technical resources to help you
- We investigate all quality concerns to ensure our products perform to the highest standards

If the product does not perform as described on this datasheet, we will offer a refund or replacement. For full details of the Abpromise, please visit <https://www.abcam.com/abpromise> or contact our technical team.

### **Terms and conditions**

---

- Guarantee only valid for products bought direct from Abcam or one of our authorized distributors