

## Product datasheet

### Recombinant human HIPK1 protein ab60867

[5 Images](#)

#### Description

<b>Product name</b>	Recombinant human HIPK1 protein
<b>Purity</b>	> 90 % Densitometry. Affinity purified.
<b>Expression system</b>	Baculovirus infected Sf9 cells
<b>Protein length</b>	Protein fragment
<b>Animal free</b>	No
<b>Nature</b>	Recombinant
<b>Species</b>	Human
<b>Amino acids</b>	156 to 555

#### Specifications

Our **Abpromise guarantee** covers the use of **ab60867** in the following tested applications.

The application notes include recommended starting dilutions; optimal dilutions/concentrations should be determined by the end user.

<b>Applications</b>	SDS-PAGE Functional Studies
<b>Form</b>	Liquid
<b>Additional notes</b>	<b>ab64311</b> (Myelin Basic Protein protein) can be utilized as a substrate for assessing kinase activity

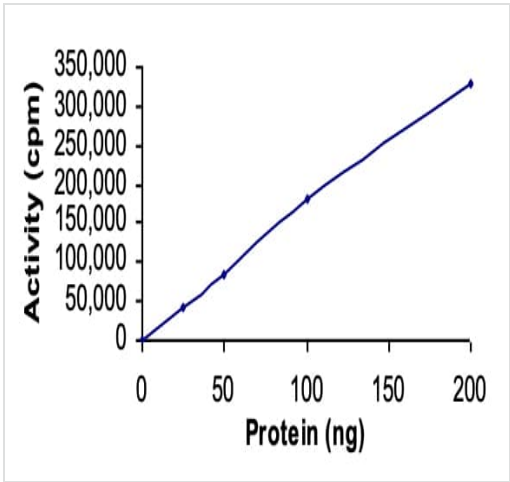
#### Preparation and Storage

<b>Stability and Storage</b>	Shipped on dry ice. Upon delivery aliquot and store at -80°C. Avoid freeze / thaw cycles. pH: 7.50 Constituents: 0.0038% EGTA, 0.00174% PMSF, 0.00385% DTT, 0.79% Tris HCl, 0.00292% EDTA, 25% Glycerol (glycerin, glycerine), 0.87% Sodium chloride This product is an active protein and may elicit a biological response in vivo, handle with caution.
------------------------------	--

#### General Info

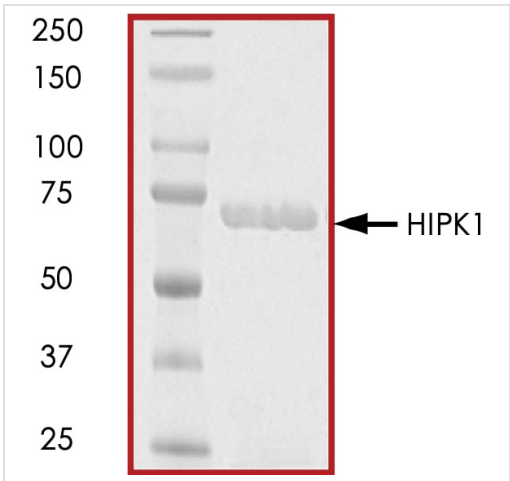
<b>Function</b>	May play a role as a corepressor for homeodomain transcription factors. Phosphorylates DAXX in response to stress, and mediates its translocation from the nucleus to the cytoplasm. May be involved in malignant squamous cell tumor formation.
<b>Tissue specificity</b>	Ubiquitously expressed with highest levels in skeletal muscle and heart. Overexpressed in breast cancer cell lines.
<b>Sequence similarities</b>	Belongs to the protein kinase superfamily. CMGC Ser/Thr protein kinase family. HIPK subfamily. Contains 1 protein kinase domain.
<b>Post-translational modifications</b>	Autophosphorylated. Phosphorylated and activated by JNK1.
<b>Cellular localization</b>	Nucleus. Cytoplasm. Predominantly nuclear.

Images



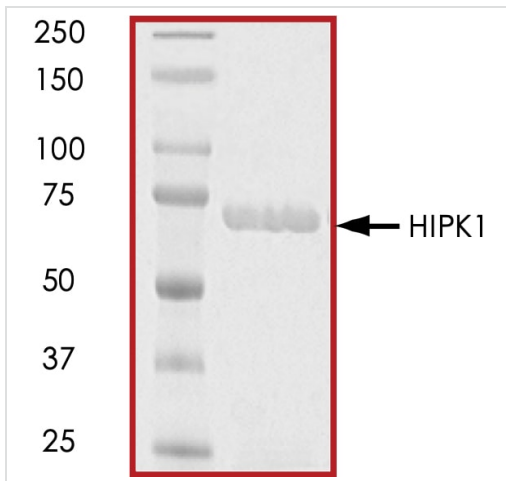
The specific activity of HIPK1 (ab60867) was determined to be 79 nmol/min/mg as per activity assay protocol

Functional Studies - Recombinant human HIPK1 protein (ab60867)



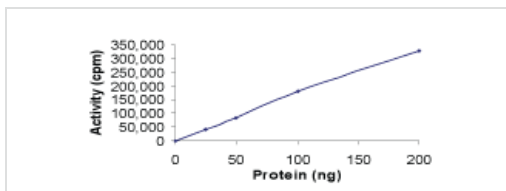
SDS PAGE analysis of ab60867

SDS-PAGE - Recombinant human HIPK1 protein (ab60867)



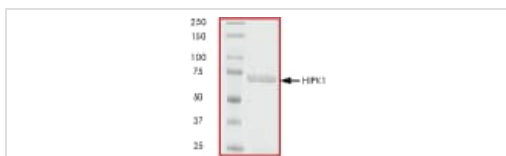
SDS PAGE analysis of ab60867

SDS-PAGE - Recombinant human HIPK1 protein  
(ab60867)



Sample Kinase Activity Plot.

Functional Studies - Recombinant human HIPK1  
protein (ab60867)



ab60867 on SDS-PAGE, MW ~71 kDa.

SDS-PAGE - Recombinant human HIPK1 protein  
(ab60867)

**Please note:** All products are "FOR RESEARCH USE ONLY. NOT FOR USE IN DIAGNOSTIC PROCEDURES"

### Our Abpromise to you: Quality guaranteed and expert technical support

- Replacement or refund for products not performing as stated on the datasheet
- Valid for 12 months from date of delivery
- Response to your inquiry within 24 hours
- We provide support in Chinese, English, French, German, Japanese and Spanish
- Extensive multi-media technical resources to help you
- We investigate all quality concerns to ensure our products perform to the highest standards

If the product does not perform as described on this datasheet, we will offer a refund or replacement. For full details of the Abpromise,

please visit <https://www.abcam.com/abpromise> or contact our technical team.

#### **Terms and conditions**

---

- Guarantee only valid for products bought direct from Abcam or one of our authorized distributors