

Recombinant Human HLA DMA protein ab116751

1 Image

Description	
Product name	Recombinant Human HLA DMA protein
Expression system	Wheat germ
Accession	<u>P28067</u>
Protein length	Full length protein
Animal free	No
Nature	Recombinant
Species	Human
Sequence	MGHEQNQGAALLQMLPLLWLLPHSWAVPEAPTPMWPDLQNHTFLHTVYCQDGSPSVGLSEAYDEDQLFFFDfsQNTRVPRLPEFADWAQEQGDAPAILFDKEFCEWMIQQIGPKLDGKIPVSRGFPIAEVFTLKPLEFGKPNTLVCFVSNLFPPMLTVNWQHHSVPVEGFGPTFVSAVDGLSFQAfSYLNFTPEPSDIFSCVTHEIDRYTAIAYWVPRNALPSDLLENVLCGVAfGLGLVLGIIVGML IYFRKPCSGD
Predicted molecular weight	54 kDa
Amino acids	1 to 261

Specifications	
Our <b>Abpromise guarantee</b> covers the use of <b>ab116751</b> in the following tested applications.	
The application notes include recommended starting dilutions; optimal dilutions/concentrations should be determined by the end user.	
Applications	ELISA SDS-PAGE Western blot
Form	Liquid

Preparation and Storage

## Stability and Storage

Shipped on dry ice. Upon delivery aliquot and store at -80°C. Avoid freeze / thaw cycles.

pH: 8.00

Constituents: 0.3% Glutathione, 0.79% Tris HCl

## General Info

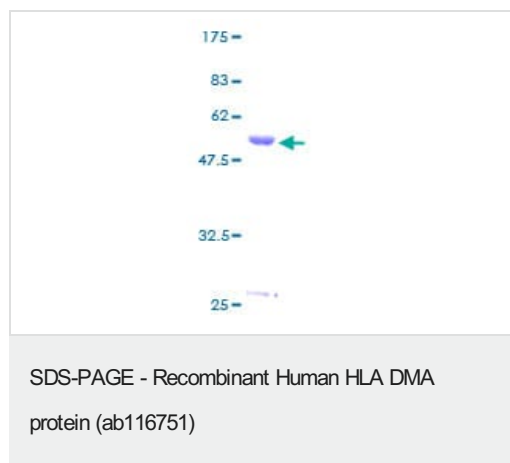
### Relevance

Human Leukocyte Antigens are highly polymorphic proteins that are involved in the presentation of antigens to the T-cell receptor. There are two classes of HLA antigens, class I (HLA-A, HLA-B and HLA-C) and class II (HLA-D). This antibody can be used for HLA typing. HLA DM plays a critical role in catalyzing the release of class II HLA-associated invariant chain-derived peptides (CLIP) from newly synthesized class II HLA molecules and freeing the peptide binding site for acquisition of antigenic peptides.

### Cellular localization

Late endosome membrane; Single-pass type I membrane protein. Lysosome membrane; Single-pass type I membrane protein. Note: Localizes to late endocytic compartment. Associates with lysosome membranes.

## Images



12.5% SDS-PAGE analysis of ab116751 at approximately 54.45kDa, stained with Coomassie Blue.

**Please note:** All products are "FOR RESEARCH USE ONLY. NOT FOR USE IN DIAGNOSTIC PROCEDURES"

## Our Abpromise to you: Quality guaranteed and expert technical support

- Replacement or refund for products not performing as stated on the datasheet
- Valid for 12 months from date of delivery
- Response to your inquiry within 24 hours
- We provide support in Chinese, English, French, German, Japanese and Spanish
- Extensive multi-media technical resources to help you
- We investigate all quality concerns to ensure our products perform to the highest standards

If the product does not perform as described on this datasheet, we will offer a refund or replacement. For full details of the Abpromise, please visit <https://www.abcam.com/abpromise> or contact our technical team.

## Terms and conditions

---

- Guarantee only valid for products bought direct from Abcam or one of our authorized distributors