

Product datasheet

Recombinant Human HOPX/HOD protein ab130041

[1 Image](#)

Description

Product name	Recombinant Human HOPX/HOD protein
Purity	> 90 % SDS-PAGE. ab130041 is purified using conventional chromatography.
Expression system	Escherichia coli
Accession	<u>Q9BPY8</u>
Protein length	Full length protein
Animal free	No
Nature	Recombinant
Species	Human
Sequence	MGSSHHHHHH SSGLVPRGSH MGS HMSAETA SGPTEDQVEI LEYNFNKVDK HPDSTTLCLI AAEAGLSEEE TQKWFKQRLA KWRRSEGLPS ECRSVTD
Predicted molecular weight	11 kDa including tags
Amino acids	1 to 73
Tags	His tag N-Terminus

Specifications

Our **Abpromise guarantee** covers the use of **ab130041** in the following tested applications.

The application notes include recommended starting dilutions; optimal dilutions/concentrations should be determined by the end user.

Applications	SDS-PAGE Mass Spectrometry
Mass spectrometry	MALDI-TOF
Form	Liquid
Additional notes	This product was previously labelled as HOPX

Preparation and Storage

Stability and Storage	Shipped at 4°C. Store at +4°C short term (1-2 weeks). Upon delivery aliquot. Store at -20°C or -
------------------------------	--

80°C. Avoid freeze / thaw cycle.

pH: 8.00

Constituents: 10% Glycerol (glycerin, glycerine), 0.32% Tris HCl

General Info

Function

Atypical homeodomain protein which does not bind DNA and is required to modulate cardiac growth and development. Acts via its interaction with SRF, thereby modulating the expression of SRF-dependent cardiac-specific genes and cardiac development. Prevents SRF-dependent transcription either by inhibiting SRF binding to DNA or by recruiting histone deacetylase (HDAC) proteins that prevent transcription by SRF. Overexpression causes cardiac hypertrophy (By similarity). May act as a tumor suppressor.

Tissue specificity

Widely expressed. Expressed in the heart, brain, placenta, lung, skeletal and smooth muscles, uterus, urinary bladder, kidney and spleen. Down-regulated in some types of cancer such as lung cancer, choriocarcinoma, head and neck squamous cell carcinoma and oral squamous cell carcinoma.

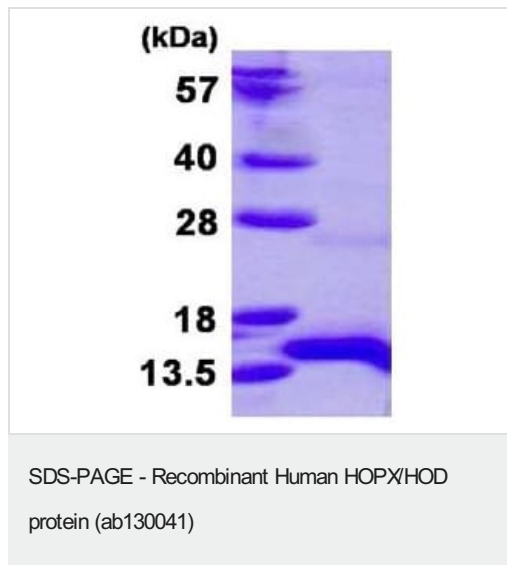
Sequence similarities

Contains 1 homeobox DNA-binding domain.

Cellular localization

Nucleus.

Images



15% SDS-PAGE showing ab130041 (3 µg).

Please note: All products are "FOR RESEARCH USE ONLY. NOT FOR USE IN DIAGNOSTIC PROCEDURES"

Our Abpromise to you: Quality guaranteed and expert technical support

- Replacement or refund for products not performing as stated on the datasheet
- Valid for 12 months from date of delivery
- Response to your inquiry within 24 hours
- We provide support in Chinese, English, French, German, Japanese and Spanish

- Extensive multi-media technical resources to help you
- We investigate all quality concerns to ensure our products perform to the highest standards

If the product does not perform as described on this datasheet, we will offer a refund or replacement. For full details of the Abpromise, please visit <https://www.abcam.com/abpromise> or contact our technical team.

Terms and conditions

- Guarantee only valid for products bought direct from Abcam or one of our authorized distributors