

Recombinant human ICAM1 protein ab168688

3 Images

Description	
Product name	Recombinant human ICAM1 protein
Biological activity	Measured by the ability of the immobilized protein to support the adhesion of PMA-stimulated HSB2 human peripheral blood acute lymphoblastic leukemia cells. When 5×10 <sup>4</sup> cells/well are added to ab168688 coated plates (12.5 µg/ml with 100 µl/well), >60% will adhere after PMA 1 hour incubation at 37°C.
Purity	> 98 % SDS-PAGE.
Endotoxin level	< 1.000 Eu/µg
Expression system	HEK 293 cells
Accession	<u>P05362</u>
Protein length	Protein fragment
Animal free	No
Nature	Recombinant
Species	Human
Sequence	AQTSVSPSKVILPRGGSVLVTCSTSCDQPKLLGIETPLPKK ELLPLGNNR KVYELSNVQEDSQPMCYSNCPDGGSTAKTFLTVYWTPER VELAPLPSWQP VGKNLTLRCQVEGGAPRANLTVLLRGEKELKREPAVGE PAEVTTTVLVR RDHHGANFSCRTELDLRPQGLELFENTSAPYQLQTFVLPA TPPQLVSPRV LEVDTQGTVVCSLDGLFPVSEAQVHLALGDQRLNPTVTY GNDSFSAKASV SVTAEDEGTQRLTCAVILGNQSQETLQVTIYSFPAPNVILT KPEVSEGT EVTVKCEAHPRAKVTLNGVPAQPLGPRAQLLLKATPEDN GRSFSCSATLE VAGQLIHKNQTRRLRVLYGPRLDERDCPGNWTWPENSQQ TPMCQAWGNPL PELKCLKDGTFFPLPIGESVTVTRDLEGTYLCRARSTQGEV TRKVTNVNLS PRYE
Predicted molecular weight	76 kDa including tags

<b>Amino acids</b>	27 to 480
<b>Tags</b>	Fc tag C-Terminus

## Specifications

Our **Abpromise guarantee** covers the use of **ab168688** in the following tested applications.

The application notes include recommended starting dilutions; optimal dilutions/concentrations should be determined by the end user.

<b>Applications</b>	Functional Studies SDS-PAGE
<b>Form</b>	Lyophilized
<b>Additional notes</b>	Measured by the ability of the immobilized protein to support the adhesion of PMA-stimulated HSB2 human peripheral blood acute lymphoblastic leukemia cells. When $5 \times 10^4$ cells/well are added to ab168688 coated plates (12.5 µg/ml with 100 µl/well), >60% will adhere after PMA 1 hour incubation at 37°C.

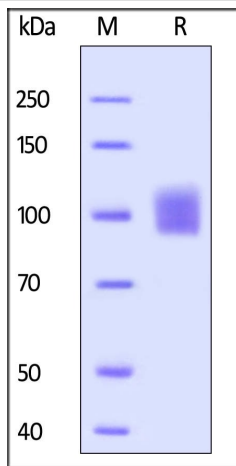
## Preparation and Storage

<b>Stability and Storage</b>	Shipped at 4°C. Store at 4°C prior to reconstitution. Store at -80°C. Avoid freeze / thaw cycle. pH: 7.4 Constituents: 5% Trehalose, 0.75% Glycine, 0.6% Tris  Storage buffer: Lyophilized from 0.22 µm filtered solution in 50 mM tris, 100 mM glycine, pH7.5. Normally Mannitol or Trehalose are added as protectants before lyophilization.  This product is an active protein and may elicit a biological response in vivo, handle with caution.
<b>Reconstitution</b>	It is recommended to reconstitute the lyophilized protein in sterile deionized water to a final concentration of 1000 ug/ml. Solubilize for 30 to 60 minutes at room temperature with occasional gentle mixing. Carrier protein (0.1% HSA or BSA) is strongly recommended for further dilution and long term storage.

## General Info

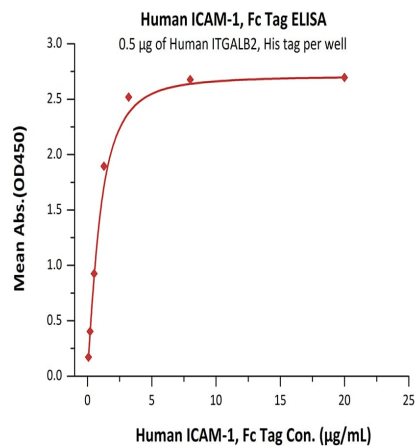
<b>Function</b>	ICAM proteins are ligands for the leukocyte adhesion protein LFA-1 (integrin alpha-L/beta-2). During leukocyte trans-endothelial migration, ICAM1 engagement promotes the assembly of endothelial apical cups through ARHGEF26/SGEF and RHOG activation. In case of rhinovirus infection acts as a cellular receptor for the virus.
<b>Sequence similarities</b>	Belongs to the immunoglobulin superfamily. ICAM family. Contains 5 Ig-like C2-type (immunoglobulin-like) domains.
<b>Post-translational modifications</b>	Monoubiquitinated, which is promoted by MARCH9 and leads to endocytosis.
<b>Cellular localization</b>	Membrane.

## Images



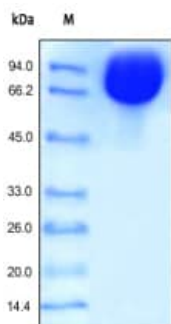
Human ICAM-1, Fc Tag on SDS-PAGE under reducing (R) condition. The gel was stained overnight with Coomassie Blue. The purity of the protein is greater than 98%.

SDS-PAGE - Recombinant human ICAM1 protein (ab168688)



Immobilized Human ITGALB2, His tag at 5 µg/mL (100 µL/well) can bind Human ICAM-1, Fc Tag with a linear range of 0.082-1.28 µg/mL.

Functional Studies - Recombinant human ICAM1 protein (ab168688)



SDS-PAGE analysis of reduced ab168688 stained overnight with Coomassie Blue. Protein migrates as 100-110 kDa in reduced SDS-PAGE resulting from glycosylation.

SDS-PAGE - Recombinant human ICAM1 protein (ab168688)

## **Our Abpromise to you: Quality guaranteed and expert technical support**

---

- Replacement or refund for products not performing as stated on the datasheet
- Valid for 12 months from date of delivery
- Response to your inquiry within 24 hours
  
- We provide support in Chinese, English, French, German, Japanese and Spanish
- Extensive multi-media technical resources to help you
- We investigate all quality concerns to ensure our products perform to the highest standards

If the product does not perform as described on this datasheet, we will offer a refund or replacement. For full details of the Abpromise, please visit <https://www.abcam.com/abpromise> or contact our technical team.

## **Terms and conditions**

---

- Guarantee only valid for products bought direct from Abcam or one of our authorized distributors