

## Product datasheet

# Recombinant Human IMMP2L protein ab183255

1 Image

### Description

<b>Product name</b>	Recombinant Human IMMP2L protein
<b>Purity</b>	> 95 % SDS-PAGE. ab183255 was purified using conventional chromatography techniques.
<b>Expression system</b>	Escherichia coli
<b>Accession</b>	<u><b>Q96T52</b></u>
<b>Protein length</b>	Protein fragment
<b>Animal free</b>	No
<b>Nature</b>	Recombinant
<b>Species</b>	Human
<b>Sequence</b>	MGSSHHHHHH SSGLVPRGSH MGSRVEGASM QPSLNPGGSQ SSDVVLLNHW KVRNFEVHRG DIVSLVSPKN PEQKIKRVI ALEGDIVRTI GHKNRYVKVP RGHIWVEGDH HGHSFDSNSF GPVSLGLLHA HATHILWPPE RWQKLESVLP PERLPVQREE E
<b>Predicted molecular weight</b>	18 kDa including tags
<b>Amino acids</b>	38 to 175
<b>Tags</b>	His tag N-Terminus

### Specifications

Our **Abpromise guarantee** covers the use of **ab183255** in the following tested applications.

The application notes include recommended starting dilutions; optimal dilutions/concentrations should be determined by the end user.

<b>Applications</b>	Mass Spectrometry SDS-PAGE
<b>Mass spectrometry</b>	MALDI-TOF
<b>Form</b>	Liquid

### Preparation and Storage

<b>Stability and Storage</b>	Shipped at 4°C. Store at +4°C short term (1-2 weeks). Upon delivery aliquot. Store at -20°C or -80°C. Avoid freeze / thaw cycle.
------------------------------	--

pH: 8.00

Constituents: 0.32% Tris HCl, 0.88% Sodium chloride, 50% Glycerol (glycerin, glycerine), 0.02% DTT

## General Info

---

### Relevance

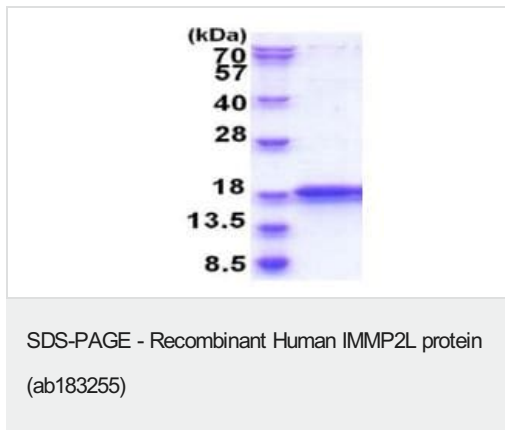
The mitochondrial inner membrane peptidase (IMP) complex generates mature, active proteins in the mitochondrial intermembrane space by proteolytically removing the mitochondrial targeting presequence of nuclear-encoded proteins. IMMPL1 and IMMPL2 are the catalytic subunits of the IMP complex.

### Cellular localization

Mitochondrion inner membrane; Single pass membrane protein.

## Images

---



15% SDS PAGE analysis of ab183255 (3µg).

**Please note:** All products are "FOR RESEARCH USE ONLY. NOT FOR USE IN DIAGNOSTIC PROCEDURES"

## Our Abpromise to you: Quality guaranteed and expert technical support

---

- Replacement or refund for products not performing as stated on the datasheet
- Valid for 12 months from date of delivery
- Response to your inquiry within 24 hours
- We provide support in Chinese, English, French, German, Japanese and Spanish
- Extensive multi-media technical resources to help you
- We investigate all quality concerns to ensure our products perform to the highest standards

If the product does not perform as described on this datasheet, we will offer a refund or replacement. For full details of the Abpromise, please visit <https://www.abcam.com/abpromise> or contact our technical team.

## Terms and conditions

---

- Guarantee only valid for products bought direct from Abcam or one of our authorized distributors