

Recombinant Human INTS3 protein ab163923

1 Image

Description

Product name	Recombinant Human INTS3 protein
Expression system	Wheat germ
Accession	<u>Q68E01</u>
Protein length	Full length protein
Animal free	No
Nature	Recombinant
Species	Human
Sequence	

MELQKGKGAAAAAASGAAGGGGGGAGAGAPGGGRLL
LSTSLDAKDELEE
RLERCMSIVTSMTAGVSEREANDALNAYVCKGLPQHEEIC
LGLFTLILTE
PAQAQKCYRDLALVSRDGMNIVLNKINQILMEKYLKLQDTC
RTQLVWLVR
ELVKSGVLGADGVCMTFMKQIAGGDVTAKNIWLAESVLDI
LTEQREWVLK
SSILIAMAVYTYLRLMDHHGTAQLQALRQKEVDFCISLLRE
RFMECLMI
GRDLVRLLQNVARIPFELLWKDIIHNPQALSPQFTGILQLL
QSRTSRKF
LACRLTPDMETKLLFMTSRVRFGQQKRYQDWFQRQYLS
T
PDSQSLRCDLI
RYICGVVHPSNEVLSSDILPRWAIIGWLLTTCTSNVAASNA
KLALFYDWL
FFSPDKDSIMNIEPAILVMHHSMKPHPAITATLLDFMCRIIPN
FYPPLEG
HVRQGVFSSLNHIVEKRVLAHLAPLFDNPKLDKELRAMLR
EKFPEFCSSP
SPPVEVKIEEPVSMEMDNHMSDKDESCYDNAEAAFSDD
EEDLNSKGKKRE
FRFHPIKETVVEEPVDITPYLDQLDESLRDKVLQLQKGS
DT
EAQCEVMQE
MDQVLEEDFDSEQLSVLASCLQELFKAHFRGEVLP
EEIT
EESLEESVGK
PLYLIFRNLCQMVEDNSSFSLLLDLLSELYQKQPKIGYHLLY
YLRASKAA

AGKMNLYESFAQATQLGDLHTCLMMDMKACQEDDVRL
 CHLTPSIYTEFP
 DETLRSGELLNMIVAVIDSAQLQELVCHVMMGNLVMFRKD
 SVLNLIQSL
 DWETFEQYCAWQLFLAHNIPLIPIQLHLKYKEHPEALSC
 LLLQLRRE
 KPSEEMVKMVLSPCHPDDQFTTSILRHWCMKHDELLAE
 HIKSLLIKNNS
 LPRKRQSLRSSSSKLAQLTLEQILEHLDNLRLNLNTKQNF
 FSQTPILQA
 LQHVQASCDEAHKMKFSDLFSLAEEYEDSSTKPPKSRRK
 AALSSPRSRKN
 ATQPPNAEEEESSSSASEEEDTKPKPTKRKRKGSSAVG
 SDSD

Amino acids 1 to 1042
Tags GST tag N-Terminus

Specifications

Our **Abpromise guarantee** covers the use of **ab163923** in the following tested applications.

The application notes include recommended starting dilutions; optimal dilutions/concentrations should be determined by the end user.

Applications Western blot
 ELISA

Form Liquid

Additional notes

Preparation and Storage

Stability and Storage Shipped on dry ice. Upon delivery aliquot and store at -80°C. Avoid freeze / thaw cycles.
 pH: 8.00
 Constituents: 0.31% Glutathione, 0.79% Tris HCl

General Info

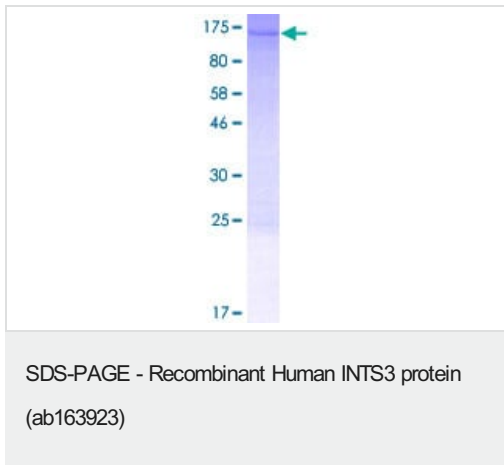
Relevance Function: Component of the Integrator complex. The Integrator complex is involved in the small nuclear RNAs (snRNA) U1 and U2 transcription and in their 3'-box-dependent processing. The Integrator complex is associated with the C-terminal domain (CTD) of RNA polymerase II largest subunit (POLR2A) and is recruited to the U1 and U2 snRNAs genes. Component of the SOSS complex, a multiprotein complex that functions downstream of the MRN complex to promote DNA repair and G2/M checkpoint. The SOSS complex associates with single-stranded DNA at DNA lesions and influences diverse endpoints in the cellular DNA damage response including cell-cycle checkpoint activation, recombinational repair and maintenance of genomic stability. The SOSS complex is required for efficient homologous recombination-dependent repair of double-strand breaks (DSBs) and ATM-dependent signaling pathways. In the SOSS complex, it is required for the assembly of the complex and for stabilization of the complex at DNA damage

sites. Similarity: Belongs to the Integrator subunit 3 family.

Cellular localization

Nuclear

Images



ab163923 on a 12.5% SDS-PAGE stained with Coomassie Blue.

Please note: All products are "FOR RESEARCH USE ONLY. NOT FOR USE IN DIAGNOSTIC PROCEDURES"

Our Abpromise to you: Quality guaranteed and expert technical support

- Replacement or refund for products not performing as stated on the datasheet
- Valid for 12 months from date of delivery
- Response to your inquiry within 24 hours
- We provide support in Chinese, English, French, German, Japanese and Spanish
- Extensive multi-media technical resources to help you
- We investigate all quality concerns to ensure our products perform to the highest standards

If the product does not perform as described on this datasheet, we will offer a refund or replacement. For full details of the Abpromise, please visit <https://www.abcam.com/abpromise> or contact our technical team.

Terms and conditions

- Guarantee only valid for products bought direct from Abcam or one of our authorized distributors