

## Product datasheet

# Recombinant Human IRE1 protein ab114174

[1 Image](#)

### Description

---

|                                   |  |
|-----------------------------------|--|
| <b>Product name</b>               | Recombinant Human IRE1 protein   |
| <b>Expression system</b>          | Wheat germ   |
| <b>Accession</b>                  | <b><u>O75460</u></b>   |
| <b>Protein length</b>             | Protein fragment   |
| <b>Animal free</b>                | No   |
| <b>Nature</b>                     | Recombinant  |
| <b>Species</b>                    | Human  |
| <b>Sequence</b>                   | EEVINLVDQTSENAPTTVSRDVEEKPAHAPARPEAPVDS<br>MLKDMATIILS<br>TFLLIGWVAFIITYPLSMHQQQLQHQQFQKELEKIQLLQQ<br>QQQLPFHP |
| <b>Predicted molecular weight</b> | 37 kDa including tags  |
| <b>Amino acids</b>                | 401 to 500   |

### Specifications

---

Our **Abpromise guarantee** covers the use of **ab114174** in the following tested applications.

The application notes include recommended starting dilutions; optimal dilutions/concentrations should be determined by the end user.

|                     |                                   |
|---------------------|-----------------------------------|
| <b>Applications</b> | Western blot<br>SDS-PAGE<br>ELISA |
| <b>Form</b>         | Liquid                            |

### Preparation and Storage

---

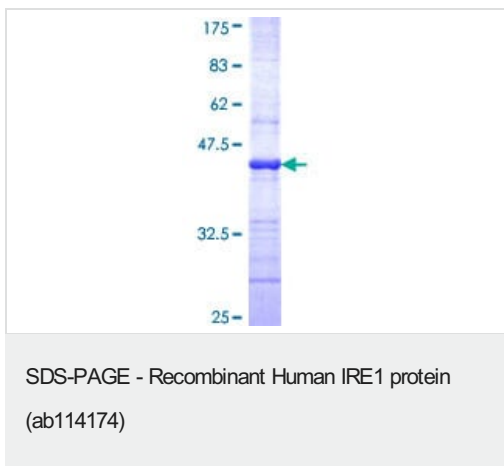
|                              |   |
|------------------------------|---|
| <b>Stability and Storage</b> | Shipped on dry ice. Upon delivery aliquot and store at -80°C. Avoid freeze / thaw cycles.<br>pH: 8.00<br>Constituents: 0.3% Glutathione, 0.79% Tris HCl |
|------------------------------|---|

### General Info

---

|   |  |
|---|--|
| <b>Function</b>                         | Senses unfolded proteins in the lumen of the endoplasmic reticulum via its N-terminal domain which leads to enzyme auto-activation. The active endoribonuclease domain splices XBP1 mRNA to generate a new C-terminus, converting it into a potent unfolded-protein response transcriptional activator and triggering growth arrest and apoptosis. |
| <b>Tissue specificity</b>               | Ubiquitously expressed. High levels observed in pancreatic tissue.   |
| <b>Sequence similarities</b>            | Belongs to the protein kinase superfamily. Ser/Thr protein kinase family.<br>Contains 1 KEN domain.<br>Contains 1 protein kinase domain.   |
| <b>Post-translational modifications</b> | Autophosphorylated.  |
| <b>Cellular localization</b>            | Endoplasmic reticulum membrane.  |

## Images



ab114174 on a 12.5% SDS-PAGE Stained with Coomassie Blue.

**Please note:** All products are "FOR RESEARCH USE ONLY. NOT FOR USE IN DIAGNOSTIC PROCEDURES"

## Our Abpromise to you: Quality guaranteed and expert technical support

- Replacement or refund for products not performing as stated on the datasheet
- Valid for 12 months from date of delivery
- Response to your inquiry within 24 hours
- We provide support in Chinese, English, French, German, Japanese and Spanish
- Extensive multi-media technical resources to help you
- We investigate all quality concerns to ensure our products perform to the highest standards

If the product does not perform as described on this datasheet, we will offer a refund or replacement. For full details of the Abpromise, please visit <https://www.abcam.com/abpromise> or contact our technical team.

## Terms and conditions

- Guarantee only valid for products bought direct from Abcam or one of our authorized distributors