

Product datasheet

Recombinant Human Kallikrein 13 protein (denatured) ab202250

[1 Image](#)

Description

Product name	Recombinant Human Kallikrein 13 protein (denatured)	
Purity	> 90 % SDS-PAGE.	
Expression system	Escherichia coli	
Accession	<u>Q9UKR3</u>	
Protein length	Full length protein	
Animal free	No	
Nature	Recombinant	
Species	Human	
Sequence	MGSSHHHHHH SSGLVPRGSH MGSGGVVSQES SKVLNTNGTS GFLPGGYTCF PHSQPWQAAL LVQGRLLCGG VLVHPKWVLT AAHCLKEGLK VYLKHALGR VEAGEQVREV VHSIPHPEYR RSPTHLNHDH DIMLLELQSP VQLTGYIQL PLSHNNRLTP GTTCRVSGWG TTTSPQVNYP KTLQCANIQL RSDEECRQVY PGKITDNMLC AGTKEGGKDS CEGDSGGPLV CNRTLYGIVS WGDFFCGQPD RPGVYTRVSR YVLWIRETIR KYETQQQKWL KGPPQ	
Predicted molecular weight	31 kDa including tags	
Amino acids	17 to 277	
Tags	His tag N-Terminus	
Additional sequence information	NP_056411. This product is for the mature full length protein from aa 17 to 277. The signal peptide is not included.	

Specifications

Our **Abpromise guarantee** covers the use of **ab202250** in the following tested applications.

The application notes include recommended starting dilutions; optimal dilutions/concentrations should be determined by the end user.

Applications SDS-PAGE

Form Liquid

Preparation and Storage

Stability and Storage

Shipped at 4°C. Store at +4°C short term (1-2 weeks). Upon delivery aliquot. Store at -20°C or -80°C. Avoid freeze / thaw cycle.

pH: 8.00

Constituents: 10% Glycerol (glycerin, glycerine), 0.32% Tris HCl

General Info

Tissue specificity

Expressed in prostate, breast, testis and salivary gland.

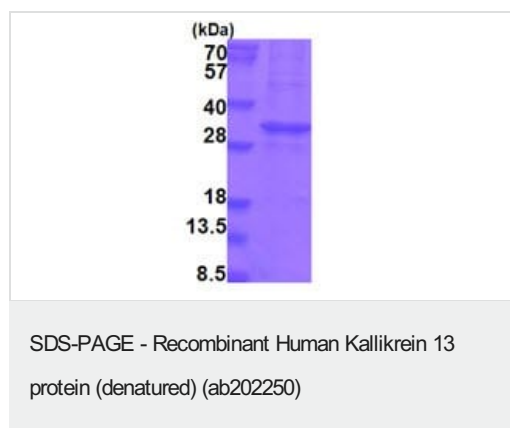
Sequence similarities

Belongs to the peptidase S1 family. Kallikrein subfamily.
Contains 1 peptidase S1 domain.

Cellular localization

Secreted.

Images



15% SDS-PAGE analysis of ab202250 (3 µg).

Please note: All products are "FOR RESEARCH USE ONLY. NOT FOR USE IN DIAGNOSTIC PROCEDURES"

Our Abpromise to you: Quality guaranteed and expert technical support

- Replacement or refund for products not performing as stated on the datasheet
- Valid for 12 months from date of delivery
- Response to your inquiry within 24 hours
- We provide support in Chinese, English, French, German, Japanese and Spanish
- Extensive multi-media technical resources to help you
- We investigate all quality concerns to ensure our products perform to the highest standards

If the product does not perform as described on this datasheet, we will offer a refund or replacement. For full details of the Abpromise, please visit <https://www.abcam.com/abpromise> or contact our technical team.

Terms and conditions

- Guarantee only valid for products bought direct from Abcam or one of our authorized distributors