

Product datasheet

Recombinant Human Kallikrein 15 protein (denatured) ab177642

[1 Image](#)

Description

Product name	Recombinant Human Kallikrein 15 protein (denatured)
Purity	> 90 % SDS-PAGE.
Expression system	Escherichia coli
Accession	<u>Q9H2R5</u>
Protein length	Full length protein
Animal free	No
Nature	Recombinant
Species	Human
Sequence	MGSSHHHHHH SSGLVPRGSH MGSLLLEGDEC APHSQPWQVA LYERGRFNCG ASLISPHWVL SAAHCQSRFM RVRIDGEHNLK KRDGPEQLRT TSRVIPHPRY EARSHRNDIM LLRLVQPARL NPQVRPAVLP TRCPHPGEAC VVSGWGLVSH NEPGTAGSPR SQVSLPDTLH CANISIISDT SCDKSYPGRL TNTMVCAGAE GRGAESCEGD SGGPLVCGGI LQGM/SWGDV PCDNTTKPGV YTKVCHYLEW IRETMKRN
Predicted molecular weight	28 kDa including tags
Amino acids	22 to 256
Tags	His tag N-Terminus
Additional sequence information	Full length mature protein

Specifications

Our **Abpromise guarantee** covers the use of **ab177642** in the following tested applications.

The application notes include recommended starting dilutions; optimal dilutions/concentrations should be determined by the end user.

Applications SDS-PAGE

Form Liquid

Preparation and Storage

Preparation and Storage

Stability and Storage

Shipped at 4°C. Store at +4°C short term (1-2 weeks). Upon delivery aliquot. Store at -20°C long term. Avoid freeze / thaw cycle.

pH: 8.00

Constituents: 0.32% Tris-HCl buffer, 10% Glycerol (glycerin, glycerine), 2.4% Urea

General Info

Function

Protease whose physiological substrate is not yet known.

Tissue specificity

Highest expression in the thyroid gland. Also expressed in the prostate, salivary, and adrenal glands and in the colon testis and kidney.

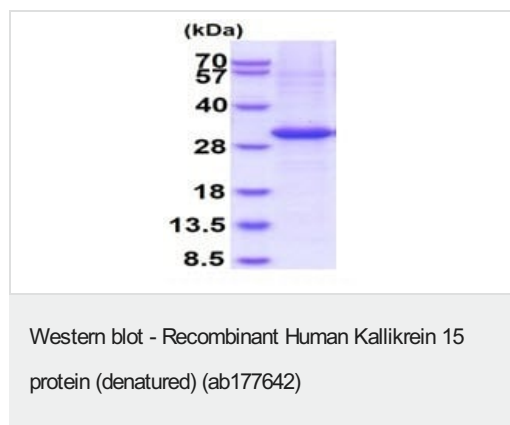
Sequence similarities

Belongs to the peptidase S1 family. Kallikrein subfamily.
Contains 1 peptidase S1 domain.

Cellular localization

Secreted.

Images



15% SDS-PAGE ab177642 (3ug)

Please note: All products are "FOR RESEARCH USE ONLY. NOT FOR USE IN DIAGNOSTIC PROCEDURES"

Our Abpromise to you: Quality guaranteed and expert technical support

- Replacement or refund for products not performing as stated on the datasheet
- Valid for 12 months from date of delivery
- Response to your inquiry within 24 hours
- We provide support in Chinese, English, French, German, Japanese and Spanish
- Extensive multi-media technical resources to help you
- We investigate all quality concerns to ensure our products perform to the highest standards

If the product does not perform as described on this datasheet, we will offer a refund or replacement. For full details of the Abpromise, please visit <https://www.abcam.com/abpromise> or contact our technical team.

Terms and conditions

- Guarantee only valid for products bought direct from Abcam or one of our authorized distributors