

Product datasheet

Recombinant Human Kallikrein 7/KLK7 protein (denatured) ab134589

1 Image

Description	
Product name	Recombinant Human Kallikrein 7/KLK7 protein (denatured)
Purity	> 90 % SDS-PAGE.
Expression system	Escherichia coli
Accession	<u>P49862</u>
Protein length	Full length protein
Animal free	No
Nature	Recombinant
Species	Human
Sequence	MGSSHHHHHHSSGLVPRGSHMGSHMIIDGAPCARGSHP WQVALLSGNQLH CGGVLVNERWVLTAAHCKMNEYTVHLGSDTLGDRRAQRI KASKSFRHPGY STQTHVNDLMLVKLNSQARLSSMVKKVRLPSRCEPPGTT CTVSGWGTTTS PDVTFPSDLMCVDVKLISPQDCTKVYKDLENSMLCAGIP DSKKNACNGD SGGPLVCRGTLQGLVSWGTFPCGQPNDPGVYTQVCKFT KWINDTMKKHR
Predicted molecular weight	27 kDa including tags
Amino acids	30 to 253
Tags	His tag N-Terminus

Specifications	
Our Abpromise guarantee covers the use of ab134589 in the following tested applications.	
The application notes include recommended starting dilutions; optimal dilutions/concentrations should be determined by the end user.	
Applications	SDS-PAGE
Form	Liquid
Additional notes	This product was previously labelled as Kallikrein 7

Preparation and Storage

Stability and Storage

Shipped at 4°C. Store at +4°C short term (1-2 weeks). Upon delivery aliquot. Store at -20°C or -80°C. Avoid freeze / thaw cycle.

pH: 8.00

Constituents: 12.01% Urea, 0.32% Tris HCl, 10% Glycerol (glycerin, glycerine)

General Info

Function

May catalyze the degradation of intercellular cohesive structures in the cornified layer of the skin in the continuous shedding of cells from the skin surface. Specific for amino acid residues with aromatic side chains in the P1 position. SCCE cleaves insulin B chain at '6-Leu-Cys-7', '16-Tyr-Leu-17', '25-Phe-Tyr-26' and '26-Tyr-Thr-27'. Could play a role in the activation of precursors to inflammatory cytokines.

Tissue specificity

Abundantly expressed in the skin and is expressed by keratinocytes in the epidermis. Also expressed in the brain, mammary gland, cerebellum, spinal cord and kidney. Lower levels in salivary glands, uterus, thymus, thyroid, placenta, trachea and testis. Up-regulated in ovarian carcinoma, especially late-stage serous carcinoma, compared with normal ovaries and benign adenomas (at protein level).

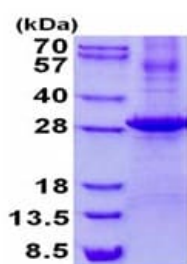
Sequence similarities

Belongs to the peptidase S1 family. Kallikrein subfamily.
Contains 1 peptidase S1 domain.

Cellular localization

Secreted. In ovarian carcinoma, secreted and also observed at the apical membrane and in cytoplasm at the invasive front.

Images



15% SDS-PAGE analysis of 3 µg ab134589.

SDS-PAGE - Recombinant Human Kallikrein
7/CLK7 protein (denatured) (ab134589)

Please note: All products are "FOR RESEARCH USE ONLY. NOT FOR USE IN DIAGNOSTIC PROCEDURES"

Our Abpromise to you: Quality guaranteed and expert technical support

- Replacement or refund for products not performing as stated on the datasheet
- Valid for 12 months from date of delivery
- Response to your inquiry within 24 hours

- We provide support in Chinese, English, French, German, Japanese and Spanish
- Extensive multi-media technical resources to help you
- We investigate all quality concerns to ensure our products perform to the highest standards

If the product does not perform as described on this datasheet, we will offer a refund or replacement. For full details of the Abpromise, please visit <https://www.abcam.com/abpromise> or contact our technical team.

Terms and conditions

- Guarantee only valid for products bought direct from Abcam or one of our authorized distributors